



SOUTH AFRICAN NOTICE TO MARINERS SEPTEMBER 2004 EDITION

**PUBLISHED MONTHLY
BY THE
HYDROGRAPHIC OFFICE
CAPE TOWN**

CONTENTS

- I Explanatory Notes and Index
- II SAN Notices to Mariners. Updates to Standard Navigational Charts
- III SAN Charts and SAN HO Publications - New Charts / Editions
- IV Corrections to SAN HO Publications
- V Corrections to SA List of Lights and Radio Services
- VI Reprints of Radio Navigational Warnings

IMPORTANT

Mariners are requested to inform the Hydrographer, Private Bag X1, Tokai 7966, immediately of the discovery of new dangers, or changes or defects in aids to navigation and of shortcomings in South African charts or publications. Copies of form HO-16, which is a convenient form on which to send in a report, may be obtained gratis from any Official Chart Agent or the reproduction at the end of Section VI of the monthly edition of Notices to Mariners.

In addition to postal methods, the following additional communication facilities are available :

Notices to Mariners Web site :	Web :	http://www.sanho.co.za
Urgent navigational information :	Fax :	021 787 2228
	Phone :	021 787 2445
Other navigational information :	Fax :	021 787 2233
	Phone :	021 787 2444
	E-mail :	hydrosan@iafrica.com
General information :	Phone :	021 787 2408

**Captain A. Kampfer
Hydrographer, SA Navy
NAVAREA VII Co-ordinator**

INDEX OF CHARTS AND PUBLICATIONS AFFECTED

SAN Charts	Notices	Pages
1003	73	1
1011	74	1
2052	75	1
SC 2	76	2
1024 (INT 7531)	77	2
127	78	2
1016	79(T)	2
SC 4	79(T)	2
SC 5	79(T)	2

SAN Publications	Notices	Pages
South African Sailing Directions Vol II - SAN HO-22 - 2002 Fourth Edition	80	5
South African List of Lights and Radio Signals - SAN HO-1 - 2002 Edition	81	6

SAN Charts - New Charts / Editions	Notices	Pages
NIL		

SANHO Publications - New / New Editions	Notices	Pages
NIL		

Spheroid / GPS Positions

All positions quoted in these Notices are referred to **Clarke 1880 (Mod) Spheroid** unless otherwise stated. On chart scales of **1: 100 000 and smaller**, positions from **GPS receivers** set to **WGS 84** may be plotted directly on these charts. Mariners are warned that **insertion of Clarke 1880 (or other) positions on Automatic Plotters which are set to WGS 84 Spheroid can result in inaccurate navigation practices.**

Temporary and Preliminary Notices

These are indicated by (T) or (P) after the notice number. These are printed on one side of the paper in order that they may be cut and filed and are placed at the end of Section II. To assist in filing, the year is indicated after the notice number. **Information from these notices is not included on charts before issue;** charts should be updated in pencil on receipt.

Permanent Notices

Permanent corrections in Section II are marked by a star adjacent to the notice number to indicate that the notice is based on original information. Periodic lists of permanent corrections pertaining to affected navigational charts and publications are published annually and copies may be obtained from the Hydrographic Office or through a Chart Agent.

Chart Corrections

Further details are contained in NP100 The Mariner's Handbook which should be consulted for the correct procedures of filing, inserting and noting all types of corrections on nautical charts and other hydrographic publications. The Handbook may be obtained from Admiralty Chart Agents in Cape Town and Durban. Consult SAN HO-6 for Symbols and Abbreviations used on SAN Charts and NP735 for an illustrated explanation of the IALA Maritime Buoyage System.

Provision of Notices to Mariners

These Notices are *gratis* and may be obtained on request from the Hydrographic Office or through the approved Chart Agents. Additional copies required of "block" chart corrections can also be obtained through the above procedure.

Radio Navigational Warnings

See Note at the start of Section IV.

GUIDANCE NOTES FOR VIEWING AND PRINTING NOTICES USING ADOBE ACROBAT

For optimum results when viewing and printing material from the PDF digital files please note the following:

The minimum specification is a 486 PC with Windows 3.1 and 4MB of RAM.

When printing data from the files, ensure the Fit to Page icon in the Adobe Acrobat print menu is switched off before printing. Otherwise large text pages will be compressed, or large size Blocks may not fit the chart.

If printing text or monochrome NM Blocks, the minimum specification is an Inkjet or good quality Laser Postscript printer with at least 6 MB of memory. (NB. If using a Postscript printer, ensure the Postscript printer driver is installed).

For printing Colour NM Blocks the minimum specification of printer is a good quality Ink Jet/Laser printer with 300 dpi resolution or greater.

If using certain types of Ink Jet printer ensure the setting is set to Dithered screening not Pattern screening.

Printed colour copies should be compared with the colour image on screen to ensure that all the colours have reproduced correctly. Printer property resolution and ink density may need to be increased or adjusted to obtain the best results.

Ensure the Colour Ink Cartridge is in accordance with the printer manufacturers specifications. Minimum paper specification for printing Colour NM Blocks is International paper size A4, thickness/weight 80 gsm paper. (The same paper as used for NM Blocks in the NM Weekly). NB. (Ensure the paper quality is in accordance with the Printer manufacturers specifications).

The Hydrographer does not accept any liability for the display and printing of these digital Notices to Mariners on the users equipment.

TEMPORARY NOTICES AND PRELIMINARY NOTICES
In force 22 September 2004

TEMPORARY NOTICES

2001 Series

95(T) Namibia Lüderitz Tiger Reef Buoy missing.

2002 Series

71(T) Namibia Lüderitz seawards Foul Area.
78(T) Namibia Baker's Bay Foul Area.
89(T) Namibia Bogenfels Anchor Obstructions, Foul Area.
111(T) RSA Saldanha Bay Oil Production Platform in position.

2003 Series

44(T) RSA Houtbaai North Mole dangerous.
45(T) RSA Port Elizabeth Construction of Ngqura harbour.
64(T) RSA Durban Oil Terminal SBM Buoy laid.
70(T) RSA Houtbaai North Mole Light moved.
72(T) RSA Lambert's Bay Scientific Buoy Mooring.
73(T) RSA Cape Barracouta Wave Rider Buoy.

2004 Series

25(T) RSA Simon's Bay Submarine Mooring Buoy temporarily removed.
49(T) RSA Table Bay Murray's Bay Harbour. Lights temporarily removed.
50(T) RSA Table Bay Buoys temporarily out of position.
79(T) RSA Gordon's Bay Harbour Charted depth unreliable.

PRELIMINARY NOTICES

2004 Series

41(P) RSA Table Bay Murray's Bay Harbour. Works in progress (2004).

II

SA NAVY SAN CHARTS OF SOUTH AFRICA AND NAMIBIA THAT ARE REFERRED TO THE WGS 84 SPHEROID

76 (INT 2640)	79 (INT 2670)	87 (INT 7570)	90 (INT 2051)
1001 (INT 2611)	1012 (INT 2672)	1024 (INT 7531)	1025 (INT 7532)
1030 (INT 7561)	1032 (INT 7572)	1033 (INT 7571)	
113	114	125	126
132	133	134	1003
1015	1017	2004	SC3
SC5			

MISCELLANEOUS

1. Mariners are advised that current and archived South African Notices to Mariners is available in PDF format on the internet at
Website : <http://www.sanho.co.za>

2. Mariners attention is invited to the fact that the Hydrographic Office E-Mail address hydrosan@iafrica.com is only manned during office hours, Mondays to Friday (Public Holidays excluded), between the hours of 0600 UTC and 1400 UTC. Only matters of a routine nature must be forwarded by this method. All urgent messages must be forwarded via Fax number 021 787 2228.

NOTE : BLOCK CORRECTIONS

The client's attention is drawn to page ii of this booklet. Should any problems be experienced during the downloading of the digital block corrections, copies may be requested gratis from the Hydrographic Office or official chart agents.

73* SOUTH AFRICA, West Coast - Hondeklipbaai - Wreck

Source : Hydrographer

SAN 1003 [Previous Update 61/04]

1. Insert :  in position 30°18'.820 S 017°16'.323 E

Note : Wreck of the diamond gravel boat JAHLEEL that sank in September 2003. Formerly the Port Elizabeth pilot boat.

2. Delete : Jetty in approximate position 30°19'.00 S 017°16'.44 E

(SAN 1003)

74* SOUTH AFRICA, West Coast - Saldanha Bay

Source : Hydrographer

SAN 1011 [Previous Update 109/02]

1. Insert : The accompanying block correction for Langebaan Lagoon in approximate position 33°05'.0 S 018°01'.0 E

(SAN 1011)

75* SOUTH AFRICA, West Coast - Saldanha Bay

Source : Hydrographer

SAN 2052 [Previous Update 41/99]

1. Insert : The accompanying block correction for Langebaan Lagoon in approximate position 33°05'.0 S 018°01'.0 E

(SAN 2052)

INTENTIONALLY
BLANK

76* SOUTH AFRICA, West Coast - Saldanha Bay

Source : Hydrographer

SAN SC 2 [Previous Update 66/02]

1. Insert : The accompanying block correction for Langebaan Lagoon in approximate position 33°05'.0 S 018°01'.0 E

(SAN SC 2)

77* SOUTH AFRICA, South Coast - Algoa Bay - Works in progress

Source : Hydrographer

SAN 1024 (INT 7531) [Previous Update 109/02]


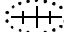
1. Insert : The accompanying block correction for Ngqura Harbour in approximate position 33°48'.0 S 025°41'.0 E

(SAN 1024)

78* SOUTH AFRICA, East Coast - East London - Wreck

Source : Hydrographer

SAN 127 [Previous Update 29/03]

1. Substitute :  with  in approximate position 33° 01'.2 S 027° 55'.5 E

(SAN 127)

79/04(T) SOUTH AFRICA, South West Coast - False Bay - Gordon's Bay Harbour - Silting

Source : Hydrographer

SAN 1016 Inset Panel [Previous Update 42/03]

SAN SC 4 Harbour Panel [Previous Update 42/03]

SAN SC 5 Harbour Panel [Previous Update 34/04]

1. Insert :

Note : The charted depth information has become unreliable due to severe silting of Gordon's Bay Harbour. A survey of the harbour is in progress. All vessels are requested to navigate with extreme caution. It is advisable to make local radio contact. Leaving and entering the harbour is recommended only during the rise of the tide.

(SAN 1016, SC 4, 5)

INTENTIONALLY
BLANK

IIA

LIST OF TEMPORARY AND PRELIMINARY NOTICES TO MARINERS ISSUED BY THE MOZAMBIQUE INSTITUTE OF HYDROGRAPHY AND NAVIGATION (INAHINA) IN FORCE

Nil prior to these Notices.

2003 Series

02MOZ(T)/03	Porto de Maputo	Buoys unlit.
03MOZ(T)/03	Baía de Inhambane	Barra Falsa unlit.
06MOZ(T)/03	Porto de Inhambane	Farol Da Barra unlit.
07MOZ(T)/03	Porto de Maputo	Buoys out of position.
09MOZ(T)/03	Porto de Maputo	Buoy unlit.

2004 Series

MOZ 20/04(T)	Port of Maputo	Cias de Bombagem temporarily unlit.
MOZ 25/04(T)	Port of Quelimane	Buoy 2 temporarily out of position.

MOZ 30/04 MOZAMBIQUE, Port of Quelimane - Buoys re-positioned

Source : INAHINA

MOZ 49625_M and BA 650

1. Re-position :

Buoy I	in position	18° 03'.56 S	037° 00'.35 E
Buoy 2B	in position	18° 04'.13 S	037° 59'.42 E
Buoy 2A	in position	18° 04'.06 S	037° 00'.24 E
Buoy 2	in position	18° 03'.12 S	037° 58'.36 E

MOZ 33/04 MOZAMBIQUE, Port of Maputo - Buoy re-positioned

Source : INAHINA

MOZ 496 and BA 644, 646

1. Re-position :

Buoy 5	in position	25° 55'.49 S	032° 51'.53 E
--------	-------------	--------------	---------------

MOZ 35/04 MOZAMBIQUE, Port of Maputo - Buoy re-positioned

Source : INAHINA

MOZ 496, 49659 and BA 644, 646

1. Re-position :

Buoy 2N	in position	25° 46'.18 S	032° 49'.74 E
---------	-------------	--------------	---------------

MOZ 37/04 MOZAMBIQUE, Port of Maputo - Buoy re-positioned

Source : INAHINA

MOZ 496, 49659 and BA 644, 646

III

NEW CHARTS AND SAN HO PUBLICATIONS - NEW CHARTS/EDITIONS

Nil

IV

CORRECTION TO SAN PUBLICATIONS

80 SOUTH AFRICAN SAILING DIRECTIONS VOL II - SAN HO-22 (4th Edition 2002)

Source : Hydrographer

Page 4-7

HONDEKLIPBAAI

1. Amend : Under para 35

A tall lattice cellular telephone mast to read A ship to shore radio mast

2. Amend : Para 36 to read

After...for beaching dinghies. There is a patent slip that has fallen into disuse and is now not operational.

Page 4-8

3. Amend : Para 40 to read

40. A flashing white light is exhibited, at an elevation of 7 m, from a steel pole mounted on a rectangular cream-coloured building at the head of the bay in position 30°18'.935S 017°16'.552E. This position is between the caravan park and the shoreline. The visibility sector....

4. Insert : New para

45. The wreck of the JAHLEEL has been reported on the rocky foul ground to the North of the entrance to Hondeklipbaai in position 30° 18'.820S 017° 16'.323E. She ran aground during a storm in September 2004. This ship was formerly the Port Elizabeth pilot boat before being refitted as a diamond gravel boat.

Page 6-24

HARBOUR ISLAND

5. Insert : Under para 18

After... directional light. The detail of the directional lights' sectors are as follows: F.R.6°, F.W.4° and F.G.6°.

INTENTIONALLY
BLANK

**81 CORRECTION TO SA LIST OF LIGHTS AND RADIO SIGNALS - SAN HO-1
(New Edition 2002)**

Source : Hydrographer

Page 13 **HONDEKLIPBAAI**

1. Amend :

Z5602 (D5705)	E side of Bay	30 18.9 17 16.6	Fl.W.3s	7	9	Metal Pole on rectangular cream-coloured building (3)	<i>fl</i> 0.3 Vis 093° - 099° (6°) (Sectors very indistinct 1998)
------------------	---------------	--------------------	---------	---	---	--	--

Page 18 **HARBOUR ISLAND**

2. Insert : After West Breakwater

Z5931 (new)	Dir. Lt	34 09.1 18 51.4	Dir.F.WRG.	3.5	1.5	Metal Pole	F.R. 6° F.W. 4° F.G. 6°
----------------	---------	--------------------	------------	-----	-----	------------	--

INTENTIONALLY
BLANK

VI

NAVAREA VII and Coastal Navigational Warnings Bulletin in force as at 22 September 2004

See NM 3/2004. Broadcast Warnings are available at Port Offices and remain valid until cancelled or until superseded by this and/or other broadcast bulletins.

NAVAREA VII MESSAGES

Nil Prior to these Messages

2004 Series

104	South Atlantic Ocean - Angola	Riglist.
111	South Atlantic Ocean - Angola	Survey conducted by Polarbjom.
114	South Indian Ocean	10 meter log drifting.
115	Africa East Coast - Mozambique	Buoy 3 out of position.
116	Africa East Coast - Mozambique	New position of buoys.
118	South Atlantic Ocean	Red and white pillar buoy spotted drifting.
121	South Atlantic Ocean - Tristan da Cunha	Metallic object spotted drifting.

COASTAL NAVIGATIONAL WARNINGS

Nil Prior to these Messages

2004 Series

369	RSA	Table Bay	Cardinal buoy out of position.
370	RSA	Elandsbaai	Scientific buoy moorings laid.
371	RSA	Houtbaai	Environmental buoy deployed.
379	RSA	Cape St Francis	1 km rope with marker buoy attached.
380	RSA	Richards Bay	Pipe laying.
398	RSA	Richards Bay	Shallow depth due to gypsum build-up.
399	RSA	Tugela River	Lighthouse operating on reduced power, character changed.
400	Namibia	Lüderitz	Swamped anchors.
405	Namibia	Walvis Bay	Unlit vessels anchored in harbour approaches.
409	Namibia	Hottentot Point	Anchor left by MV Sakawe Miner.
410	RSA	Durban	Container lost overboard.
411	RSA	Saldanha Bay	North Head light removed.
415	RSA	Ystervarkpunt	Lighthouse out of order. Standby light operational.
417	Namibia	Bogenfels	Swamped mining tools abandoned.
418	Namibia	West Coast	White and red cylinder buoy.
420	RSA	Umhlanga Rocks	Standby operational light.
424	RSA	False Bay	Chaff firing exercise.
425	RSA	False Bay	Gunnery exercise and pyrotechnics firing.
428	RSA	Wreck Point	Sampling operations by MV Douglas Bay.
429	Namibia	Lüderitz	Anchors with orange marker buoys abandoned.
431	Namibia	Chamais B	Anchors left by MV Namakwa.
432	RSA	False Bay	Explosive firing exercise.
434	RSA	Groenriviermond	Groenriviermond light unlit.
437	RSA	False Bay	Explosive firing exercise.
438	RSA	Gordon's Bay	Charted depth unreliable due to silting.

VI
ANNEX A

USA Government Special Warning in force 24 August 2003

SPECIAL WARNING NUMBER 120 WORLDWIDE

1. Due to recent events in the Middle East and the American Homeland, U.S. Forces worldwide are operating at a heightened state of readiness and taking additional defensive precautions against terrorists and other potential threats. Consequently, all aircraft, surface vessels, and sub-surface vessels approaching U.S. Forces are requested to maintain radio contact with U.S Forces on bridge-to-bridge channel 16, international air distress (121.5 Mhz VHF) or MILAIR distress (243.0 Mhz UHF).
- 2.. U.S. Forces will exercise appropriate measures in self-defence if warranted by the circumstances. Aircraft, surface vessels, and sub-surface vessels approaching U.S. Forces will, by making prior contacts as described above, help make their intentions clear and avoid unnecessary initiation of such defensive measures.
3. U.S. Forces, especially when operating in confined waters, shall remain mindful of navigational considerations of aircraft, surface vessels, and sub-surface vessels in their immediate vicinity.
4. Nothing in the Special Warning is intended to impede or otherwise interfere with the freedom of navigation or overflight of any vessel or aircraft, or to limit or expand the inherent self-defence rights of U.S. Forces. This Special Warning is published solely to advise of the heightened state of readiness of U.S. Forces and to request that radio contact be maintained as described above. (Issued 16 Nov 2001).

VI

USA Government Special Warning in force 24 August 2003

SPECIAL WARNING NUMBER 121 PERSIAN GULF

1. Coalition Naval Forces may conduct military operations in the Eastern Mediterranean Sea, Red Sea, Gulf of Aden, Arabian Sea, Gulf of Oman and Arabian Gulf. The timely and accurate identification of all vessels and aircraft in these areas are, critical to avoid the inadvertent use of force.
2. All vessels are advised that coalition Naval Forces are prepared to exercise appropriate measures in self-defense to ensure their safety in the event they are approached by vessels or aircraft. Coalition Forces are prepared to respond decisively to any hostile acts or indications of hostile intent. All maritime vessels or activities that are determined to be threats to Coalitin Naval Forces will be subject to defensive measures, including boarding, seizure, disabling or destruction, without regard to registry or location. Consequently, surface vessels, sub-surface vessels and all aircraft approaching Coalition Naval Forces are advised to maintain radio contact on Bridge-to-Bridge channel 16, International Air Distress (121.5 MHZ VHF) or Military Air Distress (243.0 MHZ UHF).
3. Vessels operating in the Middle East, Eastern Mediterranean Sea, Red Sea, Gulf of Oman, Arabian Sea and Arabian Gulf are subject to query, being stopped, boarded and searched by US/Coalision warships operating in support of operations against Iraq. Vessels found to be carrying contraband bound for Iraq or carrying and/or laying Naval mines are subject to detention, seizure and destruction. This notice is effective immediately and will remain in effect until further notice.

HO-16 (July 2002)

HYDROGRAPHIC NOTE
(for instructions, see overleaf)

Date

Ref. No

Name of ship or sender :

Address of sender :

.....

.....

Tel/Fax/Telex No. e-mail address of sender (if appropriate) :

General locality Subject :

Position : Lat :

.....

Long :

SAN Chart(s) affected :

.....

Edition dated :

Position fixing system used :

.....

Datum set :

Latest Monthly Edition of Notice to Mariners held :

Publications affected : (Edition No date of latest supplement, page and Light List No. etc.)

Details:

A replacement copy of Chart(s) No(s) is required, but see 4 overleaf.

Signature of observer/reporter :

INTENTIONALLY
BLANK

HYDROGRAPHIC NOTE

Forwarding information for South African Charts and Hydrographic Publications

INSTRUCTIONS

1. Mariners are requested to notify the Hydrographer of the South African Navy, Private Bag X1, Tokai, 7966, or by Facimile 021 7872228 or E-mail *hydrosan@iafrica.com* when new or suspected dangers to navigation are discovered, changes observed in aids to navigation, or corrections to publications seen to be necessary. The *Mariner's Handbook (NP 100) Chapter 8* gives general instructions. The provisions of international and national laws should be complied with when forwarding such reports.

2. This form and its instructions have been designed to help both the sender and the recipient. It should be used, or followed closely, whenever appropriate. Copies of this Form may be obtained gratis from the SAN Hydrographic Office at the above address or principal Chart Agents (see *Annual Notice to Mariners No. 1*).

3. When a **position** is defined by sextant angles or bearings (true or magnetic being specified) more than two should be used in order to provide a check. Distances observed by radar and the readings of Loran, Decca, etc., should be quoted. Latitude and longitude should only be used specifically to position the details when they have been fixed by astronomical observations or GPS and a full description of the method, equipment and datum (where applicable) used should be given.

4. A cutting from the largest scale chart is the best medium for forwarding details, the alterations and additions being shown thereon in red. When requested, a new copy will be sent in replacement of a chart that has been used to forward information, or when extensive observations have involved defacement of the observer's chart. If it is preferred to show the amendments on a tracing of the largest scale chart (rather than on the chart itself) these should be in red as above, but adequate details from the chart must be traced in black ink to enable the amendments to be fitted correctly.

5. When **soundings** are obtained *The Mariner's Handbook (NP 100)* should be consulted. The echo sounding trace should be marked with times, depths, etc., and forwarded with the report. It is important to state whether the echo sounder is set to register depths below the surface or below the keel; in the latter case the vessel's draught should be given. Time and date should be given in order that corrections for the height of the tide may be made where necessary. The make, name and type of set should also be given.

6. Modern **echo sounders** frequently record signals from echoes received back after one or more rotations of the stylus have been completed. Thus with a set whose maximum range is 500m, an echo recorded at 50m may be from depths of 50m, 550m or even 1050m. Soundings recorded beyond the set's nominal range can usually be recognised by the following:

- (a) the trace being weaker than normal for the depth recorded,
- (b) the trace passing through the transmission line,
- (c) the feathery nature of the trace.

As a check that apparently shoal soundings are not due to echoes received beyond the set's nominal range, soundings should be continued until reasonable agreement with charted soundings is reached. However, soundings received after one or more rotations of the stylus can still be useful and should be submitted if they show significant differences from charted depths.

7. Reports which cannot be confirmed or are lacking in certain details should not be withheld. Shortcomings should be stressed and any firm expectation of being able to check the information on a succeeding voyage should be mentioned.

8. Reports of **shoal soundings**, uncharted dangers and navigational aids out of order should, at the mariner's discretion, also be made by radio to the nearest coast radio station. The draught of modern tankers is such that any uncharted depth under 30 metres or 15 fathoms may be of sufficient importance to justify a radio message.

9. **Port information** should be forwarded on Form HO-16a together with Form HO-16. Form HO-16a lists the information required for South African Sailing Directions and should be used as an *aide memoire*. Where there is insufficient space on the form an additional sheet should be used.

Note : An acknowledgement or receipt will be sent and the information then used to the best advantage which may mean immediate action or inclusion in a revision in due course. When a Notice to Mariners is issued, the sender's ship or name is quoted as authority unless (as sometimes happens) the information is also received from other authorities. An explanation of the use made of contributions from all parts of the world would be too great a task and a further communication should only be expected when the information is of outstanding value or has unusual features.

HO-16a (March 2004)

**HYDROGRAPHIC NOTE FOR PORT
INFORMATION**

(To accompany Form HO-16)

Name of ship or sender :

Address of sender :

Ref. No.

.....

Date :

.....

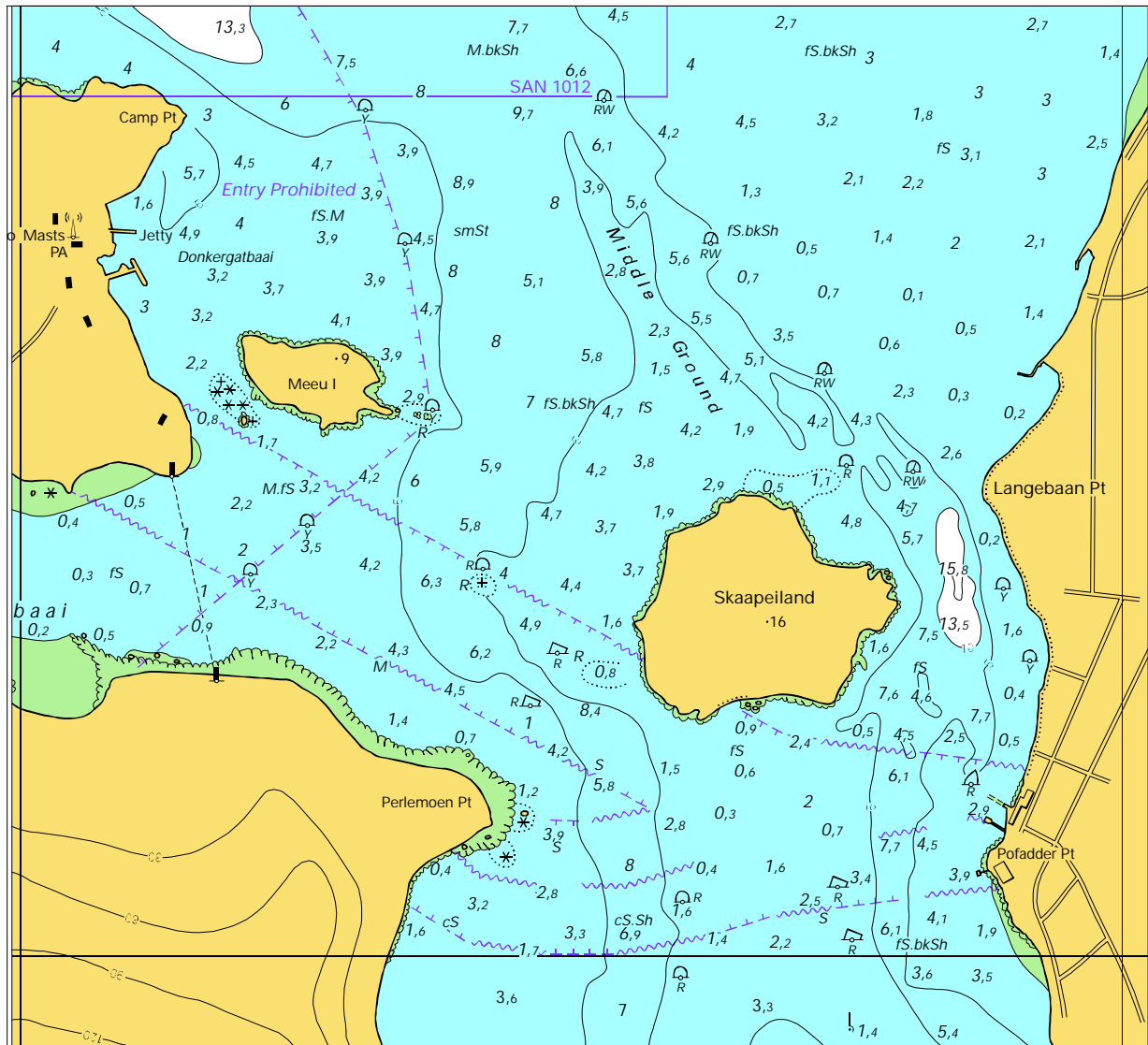
1. NAME OF PORT	
2. GENERAL REMARKS Principal activities and trade. Latest population figures and date. Number of ships or tonnage handled per year. Maximum size of vessel handled. Copy of Port Handbook if available.	
3. ANCHORAGES Designation, depths, holding ground, shelter afforded.	
4. PILOTAGE Authority for requests. Embarkation position. Regulations.	
5. DIRECTIONS Entry and berthing information. Tidal Streams. Navigational aids.	
6. TUGS Number available and max. hp.	
7. WHARVES Names, numbers or positions. Lengths. Depths alongside. Heights above Chart Datum. Facilities available.	
8. CARGO HOLDING Containers, lighters, Ro-Ro etc.	
9. CRANES Brief details and max. capacity.	

<p>10. REPAIRS</p> <p>Hull, machinery and underwater. Ship and boat yards. Docking or slipping facilities. Give size of vessels handled or dimensions. Hards or ramps. Divers.</p>	
<p>11. RESCUE AND DISTRESS</p> <p>Salvage, lifeboat, NSRI, etc.</p>	
<p>12. SUPPLIES</p> <p>Fuel with type and quantities available. Fresh water with rate of supply. Provisions.</p>	
<p>13. SERVICES</p> <p>Medical. De-ratting. Consuls. Ship chandlery, compass adjustment, tank cleaning, hull painting.</p>	
<p>14. COMMUNICATIONS</p> <p>Road, rail and air services available. Nearest airport or airfield. Port radio and information service with frequencies and hours of operating.</p>	
<p>15. PORT AUTHORITY</p> <p>Designation, address and telephone number.</p>	
<p>16. SMALL CRAFT FACILITIES</p> <p>Information and facilities for small craft (eg yachts) visiting the port. Yacht Clubs, berths, etc.</p>	
<p>17. VIEWS</p> <p>Photographs (where permitted) of the approaches, leading marks, the entrance to the harbour etc. Picture postcards may also be useful.</p>	

Signature of observer/reporter

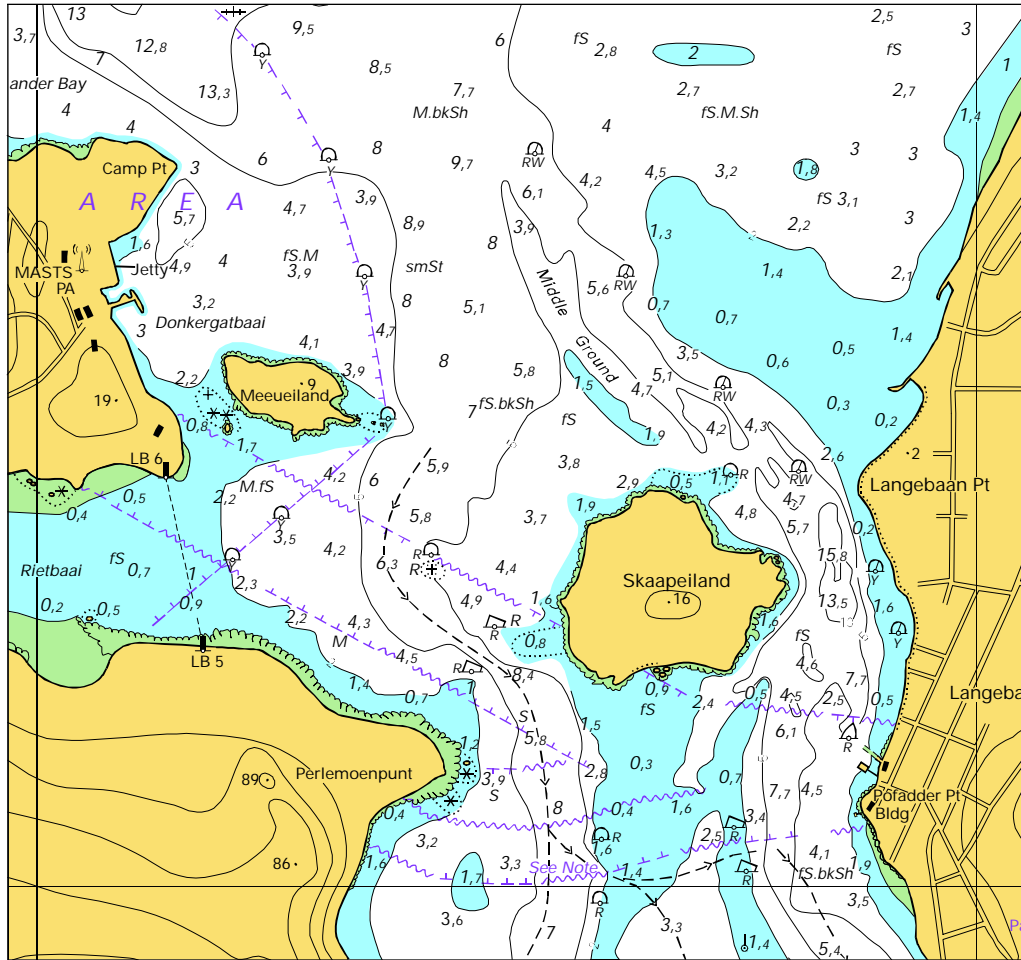
To accompany Notice to Mariners 74 of 2004

SAN 1011



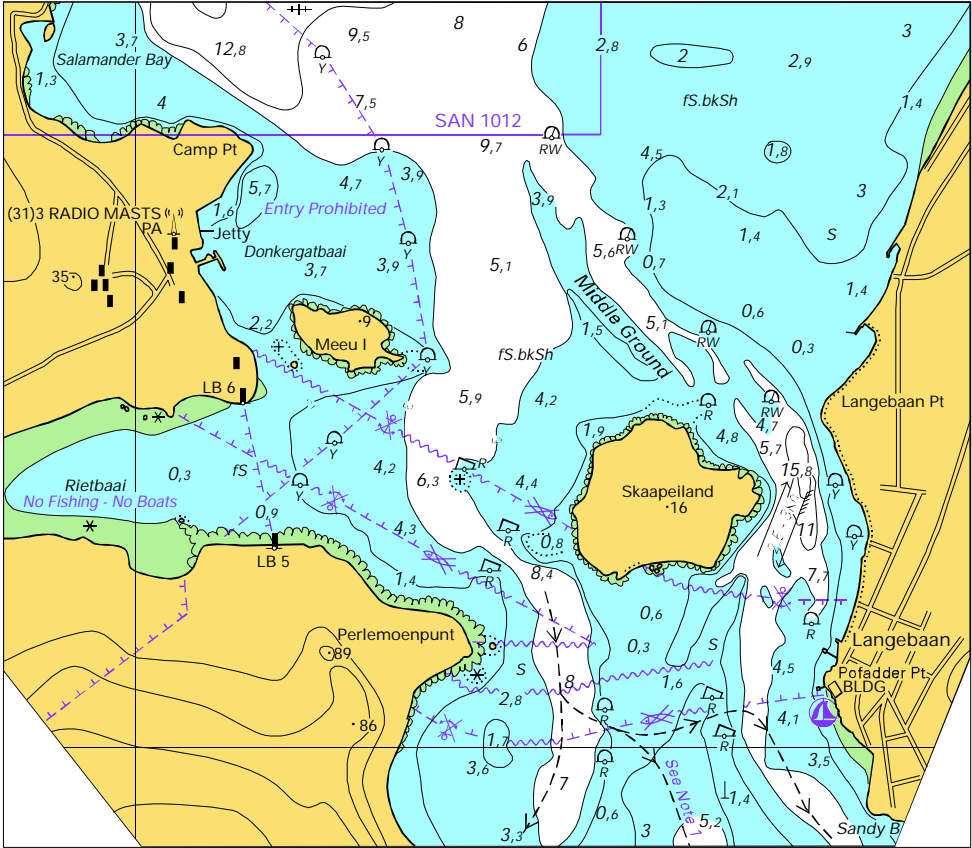
To accompany Notice to Mariners 75 of 2004

SAN 2052



To accompany Notice to Mariners 76 of 2004

SAN SC2



To accompany Notice to Mariners 77 of 2004

SAN 1024 INT 7531

