

**SAN HO-3**



**SOUTH AFRICAN NAVY HYDROGRAPHIC OFFICE**

**CATALOGUE AND INDEXES  
OF  
SAN CHARTS  
AND  
HYDROGRAPHIC PUBLICATIONS**

## PRICE LIST OF CHARTS, DIAGRAMS AND PUBLICATIONS

All navigational charts, unless otherwise stated, are currently priced at **R 376.00** per copy.  
(Also refer to page 43 for full description of SANHO publications).

### CHARTS

SAN 3001.....	R 376.00
SAN 3002.....	R 109.00
SAN MZ 1.....	R 376.00

### DIAGRAMS

P 1 to P 16.....	R 109.00
P 21.....	R 109.00
P 22.....	R 109.00

### PUBLICATIONS

SAN HO-1.....	R 195.00
SAN HO-2.....	R 252.00
SAN HO-6 (INT 1) .....	R 195.00
SAN HO-15.....	R 109.00
SAN HO-21.....	R 555.00
SAN HO-22.....	R 555.00
SAN HO-23.....	R 555.00

### MISCELLANEOUS

SAN HO-9.....	R 33.00
SAN HO-12 .....	Gratis
SAN HO-13 .....	Gratis
SAN HO-14 .....	Gratis
SAN HO-16 .....	Gratis
SAN HO-16a .....	Gratis
Bathymetric Plotting Sheets.....	R 109.00
Cumulative List of SA Notices .....	Gratis
Monthly Notices to Mariners .....	Gratis

### FISHING PLOTTING SHEETS

SAN FP 21.....	R 109.00
SAN FZ 1.....	R 109.00

Prices valid from 01 April 2025 to 31 March 2026 as approved by National Treasury

**SAN HO-3**



**SOUTH AFRICAN NAVY HYDROGRAPHIC OFFICE**

**CATALOGUE AND INDEXES**  
**OF**  
**SAN CHARTS**  
**AND**  
**HYDROGRAPHIC PUBLICATIONS**

PUBLISHED AT CAPE TOWN  
BY  
THE HYDROGRAPHIC OFFICE  
TOKAI, 7966  
SOUTH AFRICA



# CONTENTS

	<i>Page</i>
Price List of Charts, Diagrams and Publications.....	Inside Front Cover
Index of Navigational Charts, Electronic Navigational Charts, Publications, Diagrams and Miscellaneous.....	1
General Information.....	2
Agents for the Sale of South African Charts and Hydrographic Publications.....	3, 4
Distributors of Electronic Navigational Charts.....	4
Limits of Indexes.....	5
GEBCO Sheets and Bathymetric Plotting Sheets.....	6

## **Paper Chart Products**

General Charts, Charts of Islands and Antarctica.....	7, 8
A Kunene River to Orange River.....	9, 10
B Orange River to East London.....	11, 12
C East London to Inhambane.....	13, 14
D Walvis Bay.....	15, 16
E Lüderitz.....	15, 16
F St Helena Bay, Saldanha Bay, Table Bay and False Bay.....	17, 18
G Mossel Bay to Plettenberg Bay.....	19, 20
H Algoa Bay.....	19, 20
I East London.....	19, 20
J Durban.....	21, 22
K Richards Bay.....	21, 22
L Information Charts.....	23, 24
L Instructional Charts.....	23, 24
L Fishing Plotting Sheets.....	23, 24
L Plotting Sheets.....	23, 24
L Small Craft Charts.....	23, 24
L Yachting Charts.....	23, 24
Exercise Area Charts.....	25
Blank page.....	26

## **Electronic Navigational Chart Products**

Small Scale ENC's and ENC's of Islands and Antarctica.....	27, 28
1 Kunene River to Orange River.....	29, 30
2 Orange River to East London.....	31, 32
3 East London to Inhambane.....	33, 34
4 Walvis Bay.....	35, 36
5 Lüderitz.....	35, 36
6 St Helena Bay, Saldanha Bay, Table Bay and False Bay.....	37, 38
7 Mossel Bay to Plettenberg Bay.....	39, 40
8 Algoa Bay.....	39, 40
9 East London.....	39, 40
10 Durban.....	41, 42
11 Richards Bay.....	41, 42
Hydrographic Publications.....	43
Folio Lists No 1, No 2 and No 3.....	44 - 46

## INDEX OF PAPER NAVIGATIONAL CHARTS

Product No	Page	Product No	Page	Product No	Page
SAN 1	7, 8	SAN 113	9, 10, 11, 12	INT 2673 SAN 1011	17, 18
SAN 2	7, 8	SAN 114	11, 12	INT 2672 SAN 1012	17, 18
SAN 3	7, 8	SAN 115	11, 12	INT 2681 SAN 1013	17, 18
SAN 4	7, 8	SAN 116	11, 12	INT 2682 SAN 1014	17, 18
SAN 5	7, 8	SAN 117	11, 12	SAN 1015	17, 18
		SAN 118	11, 12	SAN 1016	17, 18
INT 204 SAN 27	7, 8	SAN 119	11, 12	SAN 1017	17, 18
INT 700 SAN 28	7, 8	SAN 120	11, 12	INT 7521 SAN 1020	19, 20
		SAN 121	11, 12	SAN 1021	19, 20
INT 2590 SAN 71	9, 10	SAN 122	11, 12	SAN 1022	19, 20
INT 2600 SAN 72	9, 10	SAN 123	11, 12	INT 7531 SAN 1024	19, 20
INT 2610 SAN 73	9, 10	SAN 124	11, 12	INT 7532 SAN 1025	19, 20
INT 2620 SAN 74	9, 10	SAN 125	11, 12	INT 7533 SAN 1026	19, 20
INT 2630 SAN 75	9, 10, 11, 12	SAN 126	11, 12, 13, 14	INT 7541 SAN 1027	19, 20
INT 2640 SAN 76	9, 10, 11, 12	SAN 127	11, 12, 13, 14	INT 7563 SAN 1029	21, 22
INT 2650 SAN 77	11, 12	SAN 128	11, 12, 13, 14	INT 7561 SAN 1030	21, 22
INT 2660 SAN 78	11, 12	SAN 129	13, 14	INT 7562 SAN 1031	21, 22
INT 2670 SAN 79	11, 12	SAN 130	13, 14	INT 7572 SAN 1032	21, 22
INT 2680 SAN 80	11, 12	SAN 131	13, 14	INT 7571 SAN 1033	21, 22
INT 7510 SAN 81	11, 12	SAN 132	13, 14		
INT 7520 SAN 82	11, 12	SAN 133	13, 14	INT 7745 SAN 2003	7, 8
INT 7530 SAN 83	11, 12, 13, 14	SAN 134	13, 14	INT 9056 SAN 2004	7, 8
INT 7540 SAN 84	11, 12, 13, 14	SAN 135	13, 14		
INT 7550 SAN 85	13, 14			SAN 2051	23, 24
INT 7560 SAN 86	13, 14	SAN 150	11, 12	SAN 2053	23, 24
INT 7570 SAN 87	13, 14			SAN 2054	24
INT 7580 SAN 88	13, 14	INT 2631 SAN 1002	15, 16	SAN SC 2	23, 24
		SAN 1003	9, 10, 11, 12	SAN SC 3	23, 24
INT 2051 SAN 90	9, 10	INT 2612 SAN 1004	15, 16	SAN SC 4	23, 24
INT 2052 SAN 91	9, 10, 11, 12	INT 2613 SAN 1005	15, 16	SAN SC 5	23, 24
INT 2053 SAN 92	9, 10, 11, 12	SAN 1009	17, 18	SAN SC 9	23, 24
INT 7050 SAN 93	11, 12, 13, 14	INT 2671 SAN 1010	17, 18	SAN SC 12	23, 24
INT 7051 SAN 94	11, 12, 13, 14				
INT 7052 SAN 95	13, 14				

## INDEX OF ELECTRONIC NAVIGATIONAL CHARTS (ENCs)

Product No	Page	Product No	Page	Product No	Page
ZA1N0010	27, 28, 29, 30	ZA300010	31, 32	ZA400090	39, 40
ZA1N0020	27, 28, 29, 30, 31, 32	ZA300020	31, 32	ZA400120	39, 40
ZA100010	27, 28, 29, 30, 31, 32	ZA300030	31, 32	ZA400130	39, 40
ZA100020	27, 28, 29, 30, 31, 32	ZA300040	31, 32	ZA400140	39, 40
ZA100030	27, 28, 29, 30, 31, 32, 33, 34	ZA300050	31, 32	ZA400150	41, 42
ZA2N0010	29, 30	ZA300060	31, 32	ZA400160	41, 42
ZA2N0020	29, 30, 31, 32	ZA300070	31, 32	ZA400170	41, 42
ZA2N0030	29, 30	ZA300080	31, 32, 33, 34	ZA400200	27, 28
ZA2N0040	29, 30, 31, 32	ZA300090	33, 34	ZA5N0010	35, 36
ZA200010	31, 32	ZA300100	33, 34	ZA5N0020	35, 36
ZA200020	31, 32	ZA300110	33, 34	ZA500040	37, 38
ZA200030	31, 32	ZA300120	33, 34	ZA500050	37, 38
ZA200040	31, 32, 33, 34	ZA300200	27, 28	ZA500080	37, 38
ZA200050	33, 34	ZA300300	27, 28	ZA500090	39, 40
ZA3N0010	29, 30	ZA4N0010	35, 36	ZA500120	39, 40
ZA3N0020	29, 30	ZA4N0020	35, 36	ZA500125	39, 40
ZA3N0030	29, 30	ZA400040	37, 38	ZA500140	39, 40
ZA3N0040	29, 30	ZA400050	37, 38	ZA500160	41, 42
ZA3N0050	29, 30, 31, 32	ZA400070	37, 38	ZA500170	41, 42

## INDEX OF PUBLICATIONS AND DIAGRAMS and MISCELLANEOUS

Product No	Page	Product No	Page	Product No	Page
SAN FP 21	23, 24	Exercise Area Charts	25	SAN HO-16, SAN HO-16a	43
SAN FZ 1	23, 24	GEBCO Sheets and Bathymetric Plotting Sheets	6	Folio List No 1	44
SAN HO-1 to SAN HO-23	43	SAN 3001	24	Folio List No 2	45
Plotting Sheets SAN P 1 - P 22	24	SAN 3002	24	Folio List No 3	46
		SAN MZ 1	24		

## GENERAL INFORMATION

This catalogue is amended by monthly South African Notices to Mariners and the correction information is shown in the Notation of Amendments inside the front cover of this book.

### Paper Charts

The indexes show the limits of charts. An asterisk (\*) against chart number on diagrams indicates that a panel is shown on that chart. Chart numbers in italics indicates that the chart has not yet been published. Limits shown in pecked lines in the indexes are those of projected charts and are inserted to facilitate the correction of this catalogue. The information contained in the publication is listed in nine columns, the charts being arranged in chart series and numerical order.

<b>Col 1 - Chart Number</b>	All charts are metricated.
<b>Col 2 - Chart Title</b>	The main title is given. When plans are included in the chart they are listed under the main title with their respective natural scales in the appropriate columns.
<b>Col 3 - Natural Scale</b>	Constant proportion between the true distance on the earth and on the chart at mid-latitude.
<b>Col 4, 5, 6, 7 - Chart Limits</b>	The limits of the chart are given from north to south and from west to east. Longitudes are all East from Greenwich unless otherwise stated.
<b>Col 8 - Publication Date</b>	The date of publication of a chart is shown in the middle of the bottom margin.
<b>Col 9 - New Edition Date</b>	This date is shown to the right of the publication date.

### Electronic Navigational Charts (ENCs)

ENCs are digital S-57 vector-based datasets, commonly referred to as cells, which is S-63 encrypted for use in digital applications capable of reading such files. The indexes show the limits of the ENCs. ENC numbers in italics indicates that the cell has not yet been published.

The information contained in the publication is listed in seven columns, the ENCs being arranged in numerical and series order.

<b>Col 1 - ENC Number</b>	Use this number when purchasing an ENC.
<b>Col 2 - ENC Title</b>	The main title is given.
<b>Col 3 - Display Scale</b>	The optimum viewing scale of the data when loaded on the screen.
<b>Col 4, 5, 6, 7 - ENC Limits</b>	The limits of the cell are given from north to south and from west to east. Longitudes are all East from Greenwich unless otherwise stated.

### Purchase of Products

Paper charts and publications may be purchased from the Official Agents listed on page 3 and 4, and for ENCs on page 4.

### Information for the correcting of Products

In the interest of navigation, mariners and others are invited to forward to the Hydrographic Office, Private Bag X1, Tokai 7966 or per fax (021) 7872228 or e-mail [hydrosan@iafrica.com](mailto:hydrosan@iafrica.com), any information that may be useful for the correction of charts.

Early advice, with all available particulars of newly developed dangers, the establishment of or changes in any aids to navigation, is requested.

Forms SAN HO-16 and SAN HO-16a, on which to render such information, can be obtained gratis at <http://www.sanho.co.za>, or printed copies can be obtained from the Hydrographic Office or Chart Agents.

### South African Notices to Mariners

These are published monthly and can be obtained gratis in PDF format at <http://www.sanho.co.za> or in printed versions on request from the Hydrographic Office or Chart Agents.

### Copyright

This publication, or any part thereof, may not be reproduced or transmitted in any form or by any means, electronic, mechanical or optical, for any purpose, without the express permission of the National Hydrographer, SA Navy.

### Other Useful Publications

Attention is drawn to the information contained in IHO publication C-55 Status of Hydrographic Surveys and Charting Worldwide, concerning the status of charting, surveying and the provision of maritime safety information worldwide, which is freely downloadable from the International Hydrographic Organization's website at [http://www.iho-oh1.net/iho\\_pubs/CB/C-55\\_Eng.htm](http://www.iho-oh1.net/iho_pubs/CB/C-55_Eng.htm) link.

The IHO publication S-66 Facts about Electronic Charts and Carriage Requirements should be consulted for specific information on ENCs and their use. This publication may be downloaded at this link [http://www.iho-oh1.net/iho\\_pubs/standard/S-66/S-66\\_e1.0.0\\_EN.pdf](http://www.iho-oh1.net/iho_pubs/standard/S-66/S-66_e1.0.0_EN.pdf).

## AGENTS FOR THE SALE OF SOUTH AFRICAN CHARTS AND HYDROGRAPHIC PUBLICATIONS

### NATIONAL AGENTS

Cape Town	<b>Chart World cc</b>	29 Foregate Square, 1 Harbour House, Foreshore, 8001 or PO Box 6605, Roggebaai, 8012	Tel : 021 4198814 Fax : 086 511 2110 E-mail : <a href="mailto:chartworld@mweb.co.za">chartworld@mweb.co.za</a>
Cape Town	<b>Charts International</b>	1st Floor, Unit 23, Foregate Square, Harbour Road, Foreshore, Cape Town, or PO Box 6009, Roggebaai, 8012	Tel : 021 4197700 Fax : 021 4190580 E-mail : <a href="mailto:info@chartsinternational.co.z">info@chartsinternational.co.z</a>
Deneysville	<b>Starmarine</b>	10 Wall Street or PO Box 528, Deneysville, 1932	Tel : 016 3711299 Fax : 0866 846777
Durban	<b>The Tyneside</b>	Shop 11, John Ross House, 22 Margaret Mncadi Ave, Durban, 4001	Tel : 031 3377005 Fax : 031 3328139 E-mail : <a href="mailto:tyneside@global.co.za">tyneside@global.co.za</a> Website : <a href="http://tyneside.co.za">tyneside.co.za</a>
Durban	<b>Cruising Connections</b>	7 Fenton Lane, Durban, 4001	Tel : 031 3040108 Fax : 031 3040108 E-mail : <a href="mailto:tony@cruisingconnections.co.za">tony@cruisingconnections.co.za</a> Website: <a href="http://cruisingconnections.co.za">cruisingconnections.co.za</a>
Jeffrey's Bay (branches also in Port Elizabeth and St Francis Bay)	<b>Varsitrax</b>	18 Schelde Street, Jeffrey's Bay, 6330 PO Box 959, Jeffrey's Bay, 6330	Tel : 042 2932991 Fax : 042 2931305 E-mail : <a href="mailto:buyer@commercialmarine.co.za">buyer@commercialmarine.co.za</a>
Johannesburg	<b>Carte Afrique</b>	PO Box 1943, Houghton, 2041	Tel : 011 4843718 Fax : 011 4842197 E-mail : <a href="mailto:info@carte.co.za">info@carte.co.za</a>
Mossel Bay	<b>Seven Seas Marine</b>	1 Mitchels Street, Mossel Bay, 6500 PO Box 1955, Mossel Bay, 6500	Tel : 044 6903932 Fax : 044 6903932 Cell : 082 7020655 E-mail : <a href="mailto:sevensas@telkomsa.net">sevensas@telkomsa.net</a>
Port Elizabeth (branches also in Jeffrey's Bay and St Francis Bay)	<b>Commercial Marine</b>	Dom Pedro Jetty, Port Elizabeth Harbour, 6056	Tel : 041 5862624 Fax : 041 5862797 E-mail : <a href="mailto:buyer@commercialmarine.co.za">buyer@commercialmarine.co.za</a> E-mail : <a href="mailto:info@commercialmarine.co.za">info@commercialmarine.co.za</a>
Port Elizabeth	<b>National Ship Chandlers</b>	9 Elizabeth Street, North End, Port Elizabeth, 6056 or PO Box 1625, Port Elizabeth, 6000	Tel : 041 4847633/4 Tel : 082 3724233 (AH) Tel : 082 3256684 (AH) Fax : 041 4847651 E-mail : <a href="mailto:georgec@natship.net">georgec@natship.net</a> E-mail : <a href="mailto:natshippe@natship.co.za">natshippe@natship.co.za</a>
Port St Francis	<b>Skippers Marine CC</b>	The Port Hole, Port St Francis, St Francis Bay, 6312 or PO Box 603, Humansdorp, 6300	Tel : 042 2940289 Fax : 042 2940289 Cell : 082 9772062 E-mail : <a href="mailto:yukani@intekom.co.za">yukani@intekom.co.za</a>
Sandton	<b>Venue Africa</b>	PO Box 783245, Sandton 2146	Tel : 016 3712079 Fax : 016 3711745 Cell : 083 6557949 Email : <a href="mailto:venue@global.co.za">venue@global.co.za</a> Website : <a href="http://venueafrica.com">venueafrica.com</a>

## NATIONAL AGENTS cont/

St Francis Bay    **Commercial Marine**    153 St Francis Drive, St Francis Bay, 6312  
(branches also in Jeffrey's Bay and Port Elizabeth)

Tel        : 042 2940724  
Fax        : 042 2941957  
E-mail    : [commercialmarine.co.za](mailto:commercialmarine.co.za)

Swellendam    **Heyneman Yamaha**    154 Voortrek Str, Swellendam, 6740  
PO Box 225, Swellendam, 6740

Tel        : 028 5142010  
Fax        : 028 5141105  
E-mail    : [accounts@heyneman.co.za](mailto:accounts@heyneman.co.za)

Walmer         **Dynamic Watersports**    12 3<sup>rd</sup> Avenue, Walmer, 6070  
or PO Box 1114, Jeffrey's Bay, 6330

Tel        : 041 0010547  
E-mail    : [info@dynamicelements.co.za](mailto:info@dynamicelements.co.za)

## INTERNATIONAL AGENTS

Namibia        **Viggo Lund (Pty) Ltd**    162, 7th Street, Walvis Bay or PO Box 183

Tel        : 00264 64203016  
Tel        : 00264 64206712

USA             **East View Geospatial**    10601 Wayzata Boulevard, Minneapolis, MN, 55305

Tel        : +1 952 252 1205  
Tel        : +1 952 252 1202  
Website: [geospatial.com](http://geospatial.com)  
Website: [eastview.com](http://eastview.com)  
Website: [shop.geospatial.com](http://shop.geospatial.com)  
Email     : [geospatial@eastview.com](mailto:geospatial@eastview.com)

## OFFICIAL DISTRIBUTOR OF SOUTH AFRICAN ENC'S

South African ENC products are available to commercial users through the Value Added Resellers (VARs) of the International Centre for ENC's (IC-ENC). For further details visit [www.ic-enc.org](http://www.ic-enc.org).

**Admiralty Charts and Publications ([www.ukho.gov.uk](http://www.ukho.gov.uk))**

**ChartCo ([www.chartco.com](http://www.chartco.com))**

**Chart World ([www.chartworld.com](http://www.chartworld.com))**

**Datema Nautical Safety ([www.datema.nl/specials/enc\\_track](http://www.datema.nl/specials/enc_track))**

**C-map ([www.c-map.no](http://www.c-map.no))**

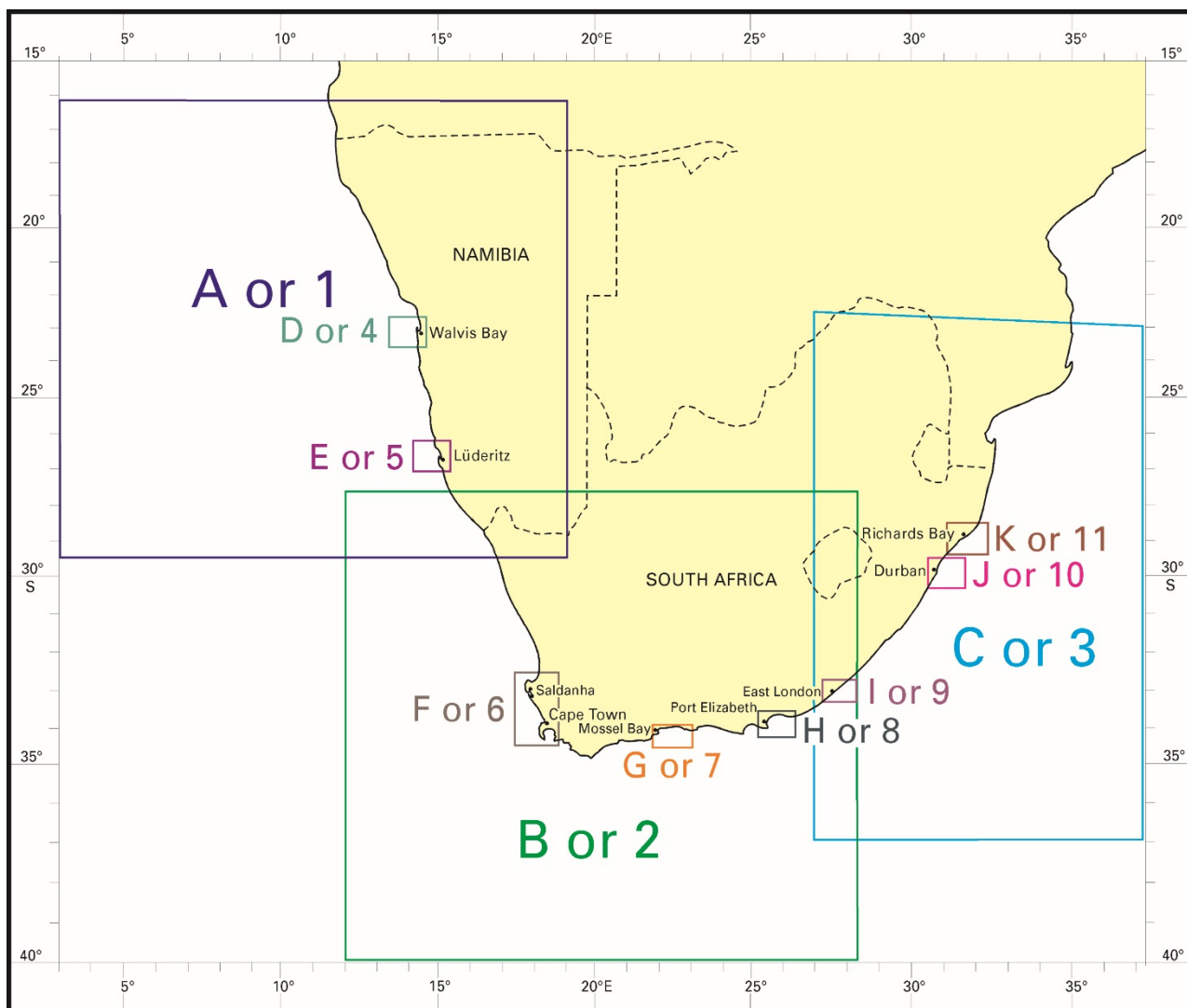
**Maris Maritime Information Systems ([www.maris.no](http://www.maris.no))**

**Navtor ([www.navtor.com](http://www.navtor.com))**

**Primar Stavanger ([www.primar-stavanger.org](http://www.primar-stavanger.org))**

## LIMITS OF INDEXES

Paper Chart Panels are labeled A through K  
ENC Panels are labeled 1 through 11

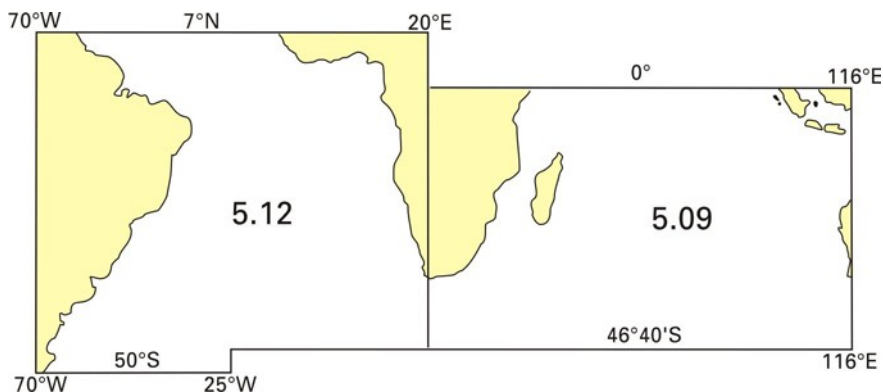


- A or 1 Kunene River to Orange River
- B or 2 Orange River to East London
- C or 3 East London to Inhambane
- D or 4 Walvis Bay
- E or 5 Lüderitz
- F or 6 Saldanha Bay, Table Bay and False Bay

- G or 7 Mossel Bay to Plettenberg Bay
- H or 8 Port Elizabeth to Bird Island
- I or 9 East London
- J or 10 Durban
- K or 11 Richards Bay

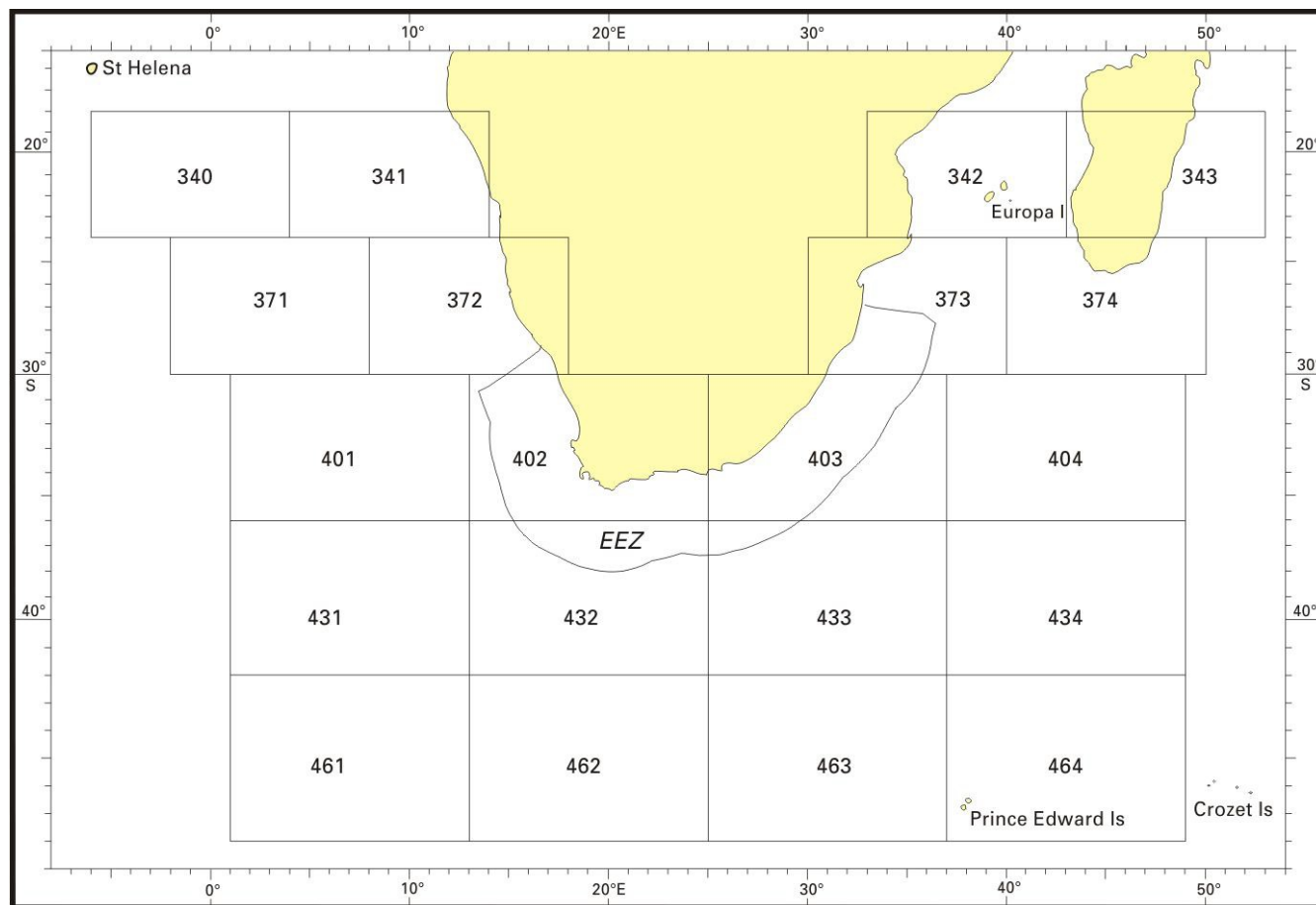
# 1 : 10 MILLION GENERAL BATHYMETRIC CHART OF THE OCEANS (GEBCO)

South African Sheets of World Series 5.00 - 5.18 (5th Edition)



Colour prints of the sheets in this series are published and sold by the Canadian Hydrographic Office and a digital version of the above series, titled the GEBCO Digital Atlas (GDA) is available on CD from the British Oceanographic Data Centre.

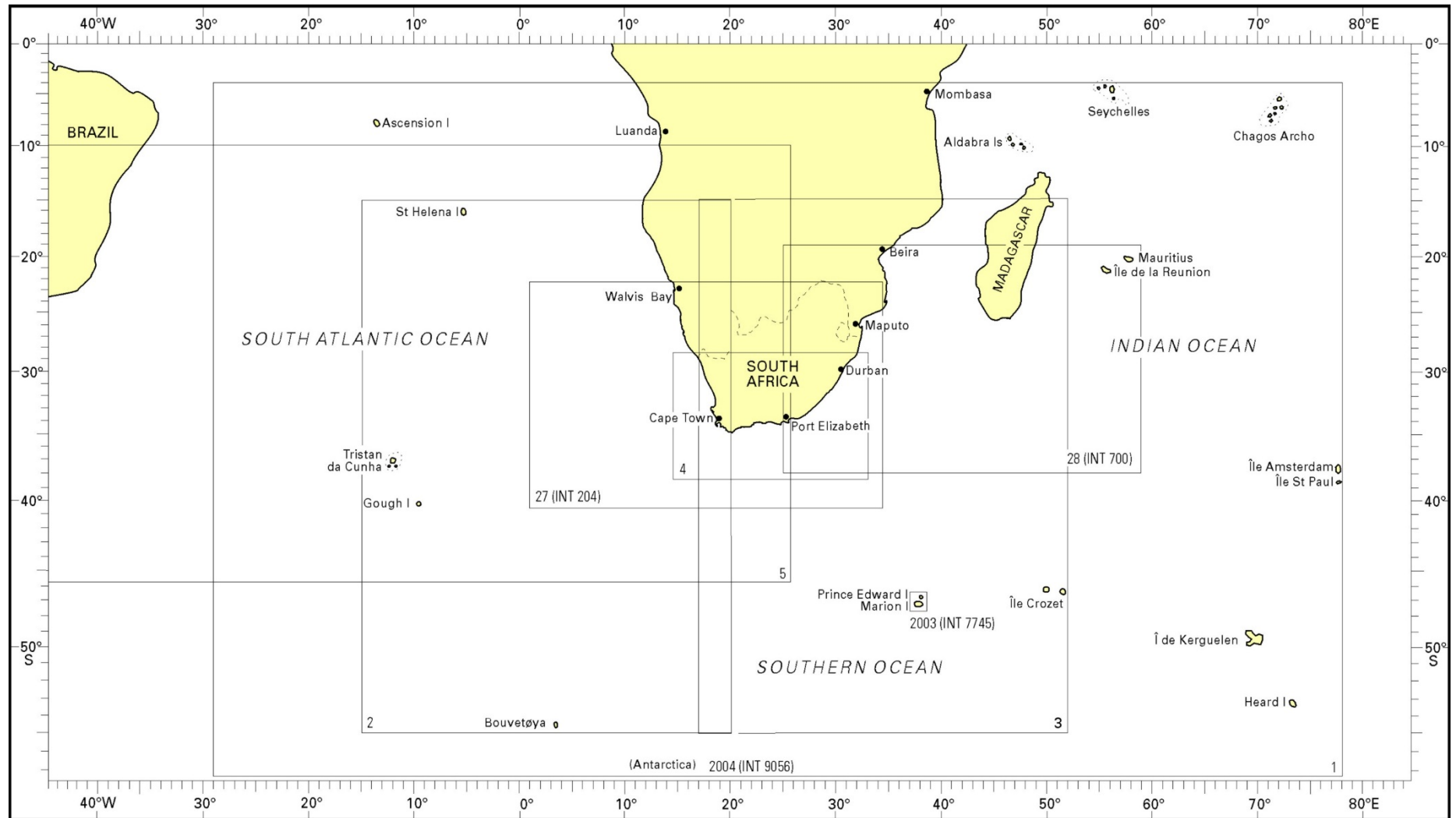
## IHO 1 : 1 MILLION BATHYMETRIC PLOTTING SHEETS



The International Hydrographic Organization (IHO) is recognized as the world data centre for bathymetry by the Intergovernmental Oceanographic Commission (IOC). RSA collectors of bathymetric data from oceanographic cruises are encouraged to send a copy of such data to the world data centre for bathymetry via the SA Hydrographic Office. In return, the IHO will make equal amounts of equivalent data available to the original supplier.

Paper copies of bathymetric plotting sheets may be ordered by their area number e.g. Bathymetric Plotting Sheet 401, (see index above) through Chart Agents, as listed on page 4 and 5, or directly from the Hydrographic Office by mutual exchange basis.

# SMALL SCALE CHARTS AND CHARTS OF ISLANDS AND ANTARCTICA



## SOUTH ATLANTIC OCEAN, INDIAN OCEAN AND ANTARCTICA

## GENERAL CHARTS

CHART NO	CHART TITLE	SCALE 1 :	N LAT (S)	S LAT (S)	W LONG (E)	E LONG (E)	PUB DATE	NE DATE
<b>SAN 1</b>	Southern Africa and Adjacent Oceans.....	10 000 000	4°00'00"	59°11'49"	29°00'00" W	78°20'55"	Mar 1979	Jul 2003
<b>SAN 2</b>	South Atlantic Ocean Eastern Portion.....	5 000 000	15°00'00"	55°25'31"	15°00'00" W	21°08'53"	Nov 1977	Apr 2009
<b>SAN 3</b>	South Indian Ocean Western Portion .....	5 000 000	15°00'00"	55°25'31"	17°00'00"	53°08'53"	Aug 1978	Oct 1998
<b>SAN 4</b>	Orange River Mouth to Richards Bay.....	1 750 000	28°30'00"	38°33'02"	15°00'00"	33°16'44"	Nov 1977	Oct 1998
<b>SAN 5 *</b>	Cape Town to Rio de Janeiro .....	7 500 000	10°00'00"	45°00'49"	50°00'00" W	25°44'04"	Mar 1994	Nov 2013
<b>INT 204 SAN 27</b>	Walvis Bay to Maputo.....	3 500 000	22°15'08"	40°30'00"	1°00'00"	34°19'59"	Apr 1974	Apr 2009
<b>INT 700 SAN 28</b>	Port Elizabeth to Mauritius .....	3 500 000	19°30'00"	38°13'37"	25°20'00"	58°39'59"	Mar 1974	Mar 1999

\* Chart SAN 5 is not corrected for Notices to Mariners

## ISLANDS

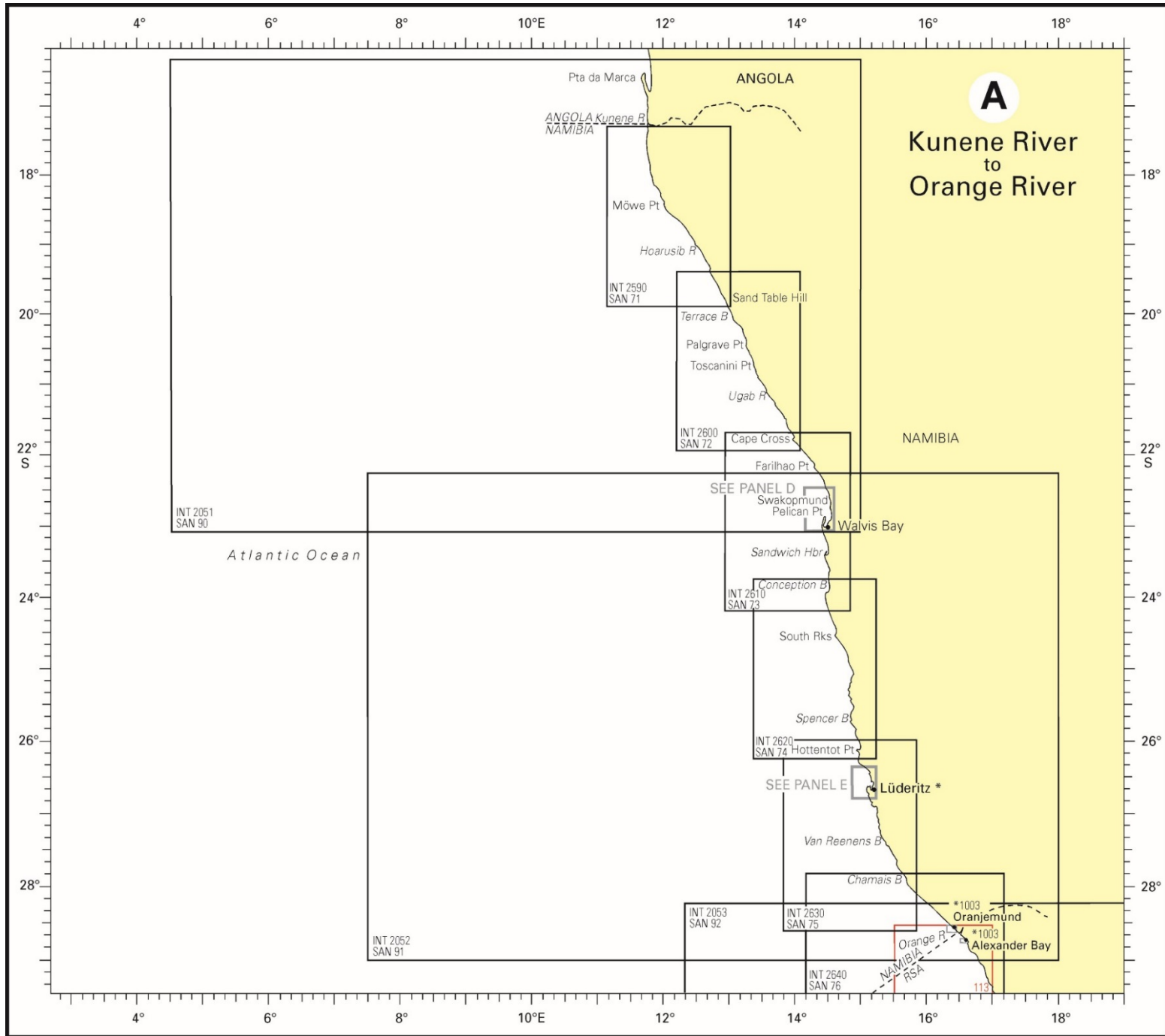
CHART NO	CHART TITLE	SCALE 1 :	N LAT (S)	S LAT (S)	W LONG (E)	E LONG (E)	PUB DATE	NE DATE
<b>INT 7745 SAN 2003</b>	Marion and Prince Edward Islands.....	100 000	46°30'00"	47°04'00"	37°15'00"	38°30'00"	Jul 1989	Jul 2013
	Transvaal Cove .....	30 000	46°50'30"	46°54'18"	37°49'48"	37°55'36"		

## ANTARCTICA

CHART NO	CHART TITLE	SCALE 1 :	N LAT (S)	S LAT (S)	W LONG (E)	E LONG (E)	PUB DATE	NE DATE
<b>INT 9056 SAN 2004</b>	Approaches to Dronning Maud Land.....	300 000	69°10'00"	71°41'00"	05°30'00" W	00°10'00" W	Dec 2000	Sep 2012

## NOTES

- Chart numbers in bold upright style are published WGS84 based charts e.g. **SAN 1**



## KUNENE RIVER TO ORANGE RIVER

### PAPER CHARTS

#### 1 : 1 000 000 INTERNATIONAL SERIES

CHART NO	CHART TITLE	N LAT (S)	S LAT (S)	W LONG (E)	E LONG (E)	PUB DATE	NE DATE
<b>INT 2051 SAN 90</b>	Baia dos Tigres to Walvis Bay.....	16°20'00"	23°05'00"	4°30'00"	15°00'00"	Jul 2003	Feb 2016
<b>INT 2052 SAN 91</b>	Walvis Bay to Orange River.....	22°30'00"	29°00'00"	7°30'00"	18°00'00"	Dec 2016	
<b>INT 2053 SAN 92</b>	Orange River to Table Bay .....	28°30'00"	36°50'00"	12°22'00"	19°00'00"	Dec 2016	

#### 1 : 300 000 INTERNATIONAL SERIES

CHART NO	CHART TITLE	N LAT (S)	S LAT (S)	W LONG (E)	E LONG (E)	PUB DATE	NE DATE
<b>INT 2590 SAN 71</b>	Kunene River to Sand Table Hill .....	17°13'00"	19°49'51"	11°06'18"	13°00'00"	Oct 1991	Jun 1999
<b>INT 2600 SAN 72</b>	Sand Table Hill to Cape Cross .....	19°20'00"	21°54'48"	12°10'00"	14°03'42"	Apr 1992	Jun 1999
<b>INT 2610 SAN 73</b>	Cape Cross to Conception Bay.....	21°40'00"	24°12'18"	12°56'17"	14°49'59"	Feb 1993	
<b>INT 2620 SAN 74</b>	Conception Bay to Hottentot Point .....	23°45'00"	26°14'51"	13°21'18"	15°15'00"	Jul 1995	
<b>INT 2630 SAN 75</b>	Hottentot Point to Chamais Bay.....	26°00'00"	28°36'38"	13°50'00"	15°51'15"	Oct 1995	
<b>INT 2640 SAN 76</b>	Chamais Bay to Port Nolloth.....	27°53'00"	29°40'00"	14°10'00"	17°10'00"	Oct 1998	Aug 2013

#### 1 : 150 000 NATIONAL SERIES

CHART NO	CHART TITLE	N LAT (S)	S LAT (S)	W LONG (E)	E LONG (E)	PUB DATE	NE DATE
<b>SAN 113</b>	Orange River to White Point.....	28°32'00"	29°23'34"	15°30'54"	17°00'00"	Oct 1972	Jul 2000

#### LARGE SCALE NATIONAL CHARTS

CHART NO	CHART TITLE	SCALE 1 :	N LAT (S)	S LAT (S)	W LONG (E)	E LONG (E)	PUB DATE	NE DATE
SAN 1003	Harbours on SW Coast of Africa							
	Oranjemund .....	50000	28°33'01"	28°38'25"	16°17'07"	16°25'33"	Jul 1998	
	Alexander Bay.....	6 000	28°39'49"	28°41'11"	16°29'11"	16°30'57"		
	Hondeklipbaai.....	10 000	30°18'24"	30°19'29"	17°15'36"	17°16'46"		
	Port Nolloth.....	10 000	29°14'20"	29°16'07"	16°50'15"	16°53'12"		
	Lambert's Bay .....	9 000	32°04'25"	32°05'49"	18°16'39"	18°19'24"		

#### NOTES

1. Chart numbers in bold upright style are published WGS84 based charts e.g. **INT 2051 SAN 90**
2. Chart numbers in normal upright style are published Clarke 1880 based charts e.g. SAN 1003
3. For Walvis Bay coverage see Panel D; for Lüderitz coverage see Panel E.



## ORANGE RIVER TO EAST LONDON

### PAPER CHARTS

#### 1 : 1 000 000 INTERNATIONAL SERIES

CHART NO	CHART TITLE	N LAT (S)	S LAT (S)	W LONG (E)	E LONG (E)	PUB DATE	NE DATE
<b>INT 2052 SAN 91</b>	Walvis Bay to Orange River.....	22°30'00"	29°00'00"	7°30'00"	18°00'00"	Dec 2016	
<b>INT 2053 SAN 92</b>	Orange River to Table Bay.....	28°30'00"	36°50'00"	12°22'00"	19°00'00"	Dec 2016	
<b>INT 7050 SAN 93</b>	Table Bay to East London.....	32°45'00"	38°00'00"	18°00'00"	28°00'00"	Feb 2018	
<b>INT 7051 SAN 94</b>	East London to Richards Bay.....	28°15'00"	36°30'00"	26°52'00"	33°30'00"	Feb 2018	

#### 1 : 300 000 INTERNATIONAL SERIES

CHART NO	CHART TITLE	N LAT (S)	S LAT (S)	W LONG (E)	E LONG (E)	PUB DATE	NE DATE
<b>INT 2630 SAN 75</b>	Hottentot Point to Chamais Bay.....	26°00'00"	28°36'38"	13°50'00"	15°51'15"	Oct 1995	
<b>INT 2640 SAN 76</b>	Chamais Bay to Port Nolloth.....	27°53'00"	29°40'00"	14°10'00"	17°10'00"	Oct 1998	Aug 2013
<b>INT 2650 SAN 77</b>	Port Nolloth to Island Point.....	29°13'00"	30°58'27"	15°00'00"	18°00'00"	Nov 1995	
<b>INT 2660 SAN 78</b>	Island Point to Cape Deseada.....	30°46'15"	32°30'00"	15°30'00"	18°30'00"	Mar 1994	
<b>INT 2670 SAN 79</b>	Cape Deseada to Table Bay.....	32°10'01"	34°37'06"	16°58'42"	18°59'58"	Oct 1990	Nov 1999
<b>INT 2680 SAN 80</b>	Table Bay to Cape Agulhas.....	33°45'00"	35°23'00"	17°10'00"	20°10'02"	Aug 1990	Mar 1997
<b>INT 7510 SAN 81</b>	Cape Agulhas to Cape St Blaize .....	34°00'00"	35°37'42"	19°35'00"	22°35'00"	Mar 1997	
<b>INT 7520 SAN 82</b>	Cape St Blaize to Cape St Francis.....	33°45'00"	35°23'00"	22°00'00"	25°00'00"	Mar 1997	
<b>INT 7530 SAN 83</b>	Cape St Francis to Great Fish Point .....	33°25'00"	35°03'23"	24°38'00"	27°38'01"	Mar 1997	Nov 2000
<b>INT 7540 SAN 84</b>	Great Fish Point to Mbashe Point .....	32°00'00"	34°27'00"	27°00'00"	29°01'00"	Apr 2005	

#### 1 : 150 000 NATIONAL SERIES

CHART NO	CHART TITLE	SCALE 1:	N LAT (S)	S LAT (S)	W LONG (E)	E LONG (E)	PUB DATE	NE DATE
<b>SAN 113</b>	Orange River to White Point.....		28°32'00"	29°23'34"	15°30'54"	17°00'00"	Oct 1972	Jul 2000
<b>SAN 114</b>	White Point to Skulfonteinpunt .....		29°19'12"	30°10'24"	15°51'00"	17°20'36"	Aug 1972	Nov 2003
<b>SAN 115</b>	Skulfonteinpunt to Island Point.....		30°05'12"	30°56'24"	16°14'00"	17°44'24"	Jan 1972	Jul 2005
<b>SAN 116</b>	Island Point to Olifantsrivier .....		30°53'01"	31°44'34"	16°46'57"	18°18'12"	Jan 1973	Mar 1998
SAN 117	Olifantsrivier to Cape Columbine.....		31°36'42"	32°53'00"	17°21'58"	18°25'00"	Apr 1972	Nov 1996
SAN 118	Cape Columbine to Table Bay.....		32°40'42"	33°57'00"	17°26'12"	18°30'00"	May 1981	Jul 1998
	House Bay – Dasseneiland .....	12 000						
SAN 119	Melkbospunt to Kaap Hangklip.....		33°42'00"	34°58'16"	17°50'00"	18°54'33"	Jul 1979	Jul 1998
SAN 120	Cape Point to Cape Agulhas .....		34°16'00"	35°07'34"	18°27'00"	20°01'51"	Sep 1980	Oct 1986
	Gansbaai.....	10 000						
<b>SAN 121</b>	Cape Agulhas to Cape Barracouta.....		34°20'00"	35°11'31"	19°52'00"	21°26'51"	May 1980	Nov 2014
<b>SAN 122</b>	Cape Barracouta to Cape St Blaize.....		34°00'00"	35°16'12"	21°13'00"	22°17'36"	Nov 1975	Nov 2014
SAN 123	Cape St Blaize to Cape Seal .....		33°53'00"	34°44'35"	22°05'00"	23°39'28"	Feb 1976	
<b>SAN 124</b>	Cape Seal to Cape St Francis .....		33°53'00"	34°44'35"	23°20'00"	24°54'28"	Feb 1976	
<b>SAN 125</b>	Cape St Francis to Bird Island.....		33°40'00"	34°31'28"	24°45'00"	26°19'00"	Apr 1975	Apr 2002
<b>SAN 126</b>	Port Elizabeth to Great Fish Point .....		33°30'00"	34°21'34"	25°35'00"	27°09'00"	Apr 1975	Apr 2003
<b>SAN 127</b>	Great Fish Point to East London.....		32°55'12"	34°11'12"	26°58'00"	28°01'48"	Feb 1976	Dec 2007
SAN 128	East London to Mbashe River .....		32°10'00"	33°26'15"	27°53'00"	28°56'23"	Nov 1976	

#### 1 : 100 000 NATIONAL CHART

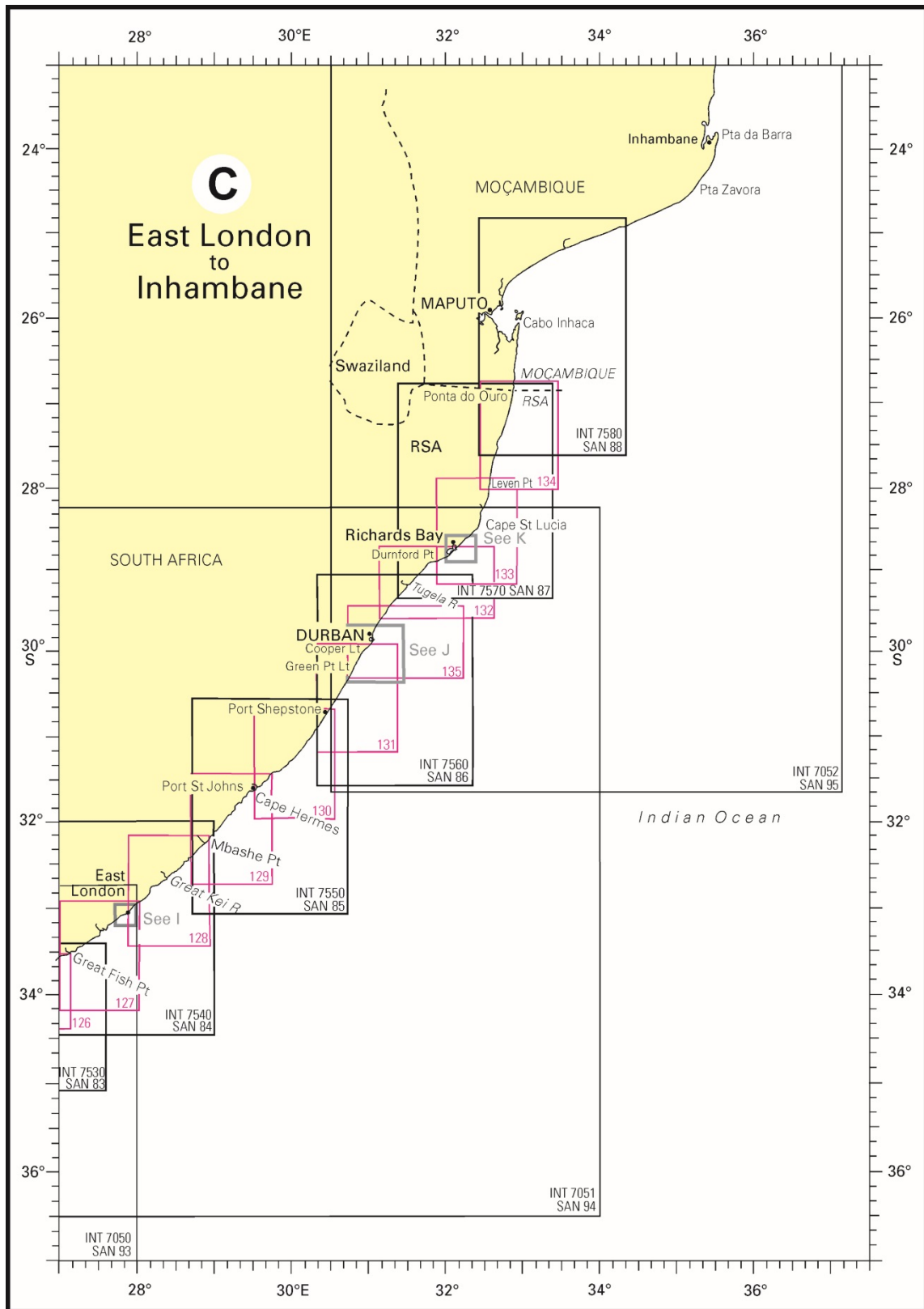
SAN 150	Table Bay to Valsbaai.....		33°43'09"	34°34'00"	18°09'16"	18°52'12"	Sep 1978	Nov 1999
---------	----------------------------	--	-----------	-----------	-----------	-----------	----------	----------

#### LARGE SCALE NATIONAL CHARTS

SAN 1003	Harbours on SW Coast of Africa							
	Oranjemund .....	50 000	28°33'01"	28°38'25"	16°17'07"	16°25'33"	Jul 1998	
	Alexander Bay.....	6 000	28°39'49"	28°41'11"	16°29'11"	16°30'57"		
	Hondeklipbaai.....	10 000	30°18'24"	30°19'29"	17°15'36"	17°16'46"		
	Port Nolloth.....	10 000	29°14'20"	29°16'07"	16°50'15"	16°53'12"		
	Lambert's Bay .....	9 000	32°04'25"	32°05'49"	18°16'39"	18°19'24"		

#### NOTES

1. Chart numbers in bold upright style are published WGS84 based charts e.g. **INT 2052 SAN 91**
2. Chart numbers in normal upright style are published Clarke 1880 based charts e.g. SAN 1003
3. For Lüderitz coverage see Panel E; for St Helena B, Saldanha Bay and Cape Peninsula see Panel F; for Mossel Bay, Plettenberg Bay see panel G; for Algoa Bay see Panel H and for East London see Panel I.



## EAST LONDON TO INHAMBANE

### PAPER CHARTS

#### 1 : 1 000 000 INTERNATIONAL SERIES

CHART NO	CHART TITLE	N LAT (S)	S LAT (S)	W LONG (E)	E LONG (E)	PUB DATE	NE DATE
<b>INT 7050 SAN 93</b>	Table Bay to East London .....	32°45'00"	38°00'00"	18°00'00"	28°00'00"	Feb 2018	
<b>INT 7051 SAN 94</b>	East London to Richards Bay .....	28°15'00"	36°30'00"	26°52'00"	33°30'00"	Feb 2018	
<b>INT 7052 SAN 95</b>	Durban to Inhambane .....	22°50'00"	31°40'00"	30°30'00"	37°08'00"	Dec 2020	

#### 1 : 300 000 INTERNATIONAL SERIES

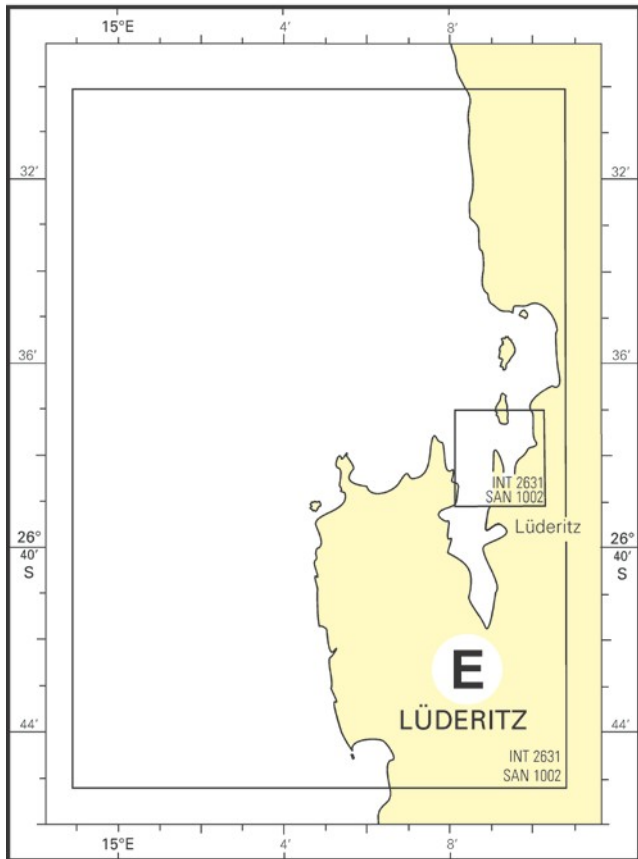
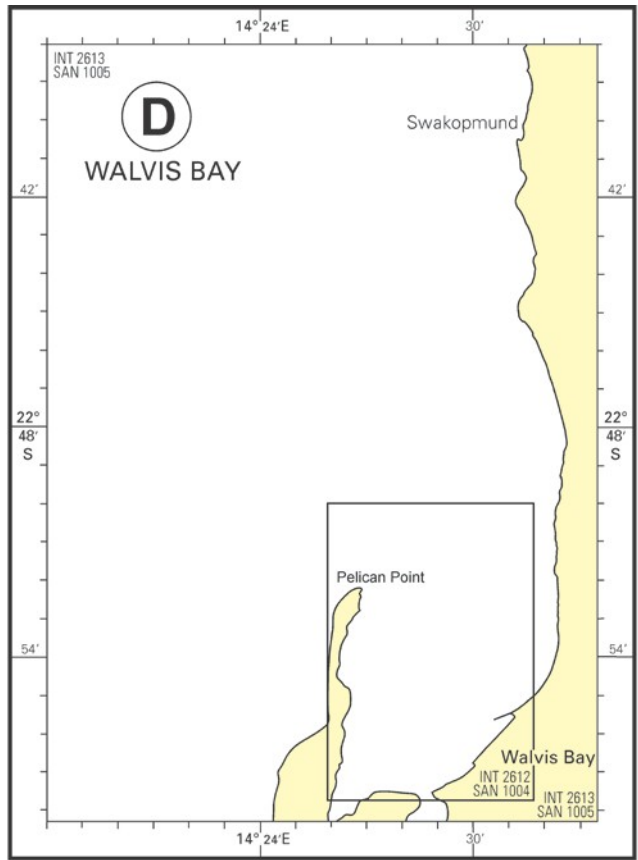
CHART NO	CHART TITLE	N LAT (S)	S LAT (S)	W LONG (E)	E LONG (E)	PUB DATE	NE DATE
<b>INT 7530 SAN 83</b>	Cape St Francis to Great Fish Point .....	33°25'00"	35°03'23"	24°38'00"	27°38'01"	Mar 1997	Nov 2000
<b>INT 7540 SAN 84</b>	Great Fish Point to Mbashe Point .....	32°00'00"	34°27'00"	27°00'00"	29°01'00"	Apr 2005	
<b>INT 7550 SAN 85</b>	Mbashe Point to Port Shepstone .....	30°05'00"	33°04'30"	28°44'00"	30°45'00"	Jul 2012	
<b>INT 7560 SAN 86</b>	Port Shepstone to Tugela River .....	29°05'00"	31°35'00"	30°20'00"	32°20'00"	May 2013	
<b>INT 7570 SAN 87</b>	Tugela River to Ponta do Ouro .....	26°47'00"	29°22'31"	31°22'00"	33°23'16"	Jul 2001	
<b>INT 7580 SAN 88</b>	Jesser Point to Boa Paz .....	24°50'00"	27°37'00"	32°25'00"	34°20'00"	Dec 2020	

#### 1 : 150 000 NATIONAL SERIES

CHART NO	CHART TITLE	N LAT (S)	S LAT (S)	W LONG (E)	E LONG (E)	PUB DATE	NE DATE
<b>SAN 126</b>	Port Elizabeth to Great Fish Point .....	33°30'00"	34°21'34"	25°35'00"	27°09'00"	Apr 1975	Apr 2003
<b>SAN 127</b>	Great Fish Point to East London.....	32°55'12"	34°11'12"	26°58'00"	28°01'48"	Feb 1976	Dec 2007
SAN 128	East London to Mbashe River .....	32°10'00"	33°26'15"	27°53'00"	28°56'23"	Nov 1976	
SAN 129	Mbashe River to Port St Johns.....	31°27'00"	32°43'18"	28°42'00"	29°44'55"	Jul 1979	
SAN 130	Port St Johns to Port Shepstone.....	30°42'00"	31°58'19"	29°31'00"	30°33'25"	Oct 1979	
SAN 131	Port Shepstone to Cooper Light .....	29°55'00"	31°11'19"	30°20'00"	31°21'55"	Sep 1982	
<b>SAN 132</b>	Tongaat Bluff to Richards Bay .....	28°45'00"	29°36'24"	31°08'00"	32°37'12"	Sep 1982	Feb 2015
<b>SAN 133</b>	Durnford Point to Leven Point .....	27°54'42"	29°11'00"	31°53'19"	32°54'00"	Jun 1974	Jul 2002
<b>SAN 134</b>	Leven Point to Ponta do Ouro .....	26°45'12"	28°01'12"	32°27'00"	33°26'48"	Nov 1975	Mar 2004
SAN 135	Aliwal Shoal to Tongaat Bluff .....	29°28'27"	30°20'00"	30°43'00"	32°12'56"	Sep 1982	Jul 2002

#### NOTES

1. Chart numbers in bold upright style are published WGS84 based charts e.g. **INT 7050 SAN 93**
2. Chart numbers in normal upright style are published Clarke 1880 based charts e.g. SAN 1003
3. For East London see Panel I; for Durban see Panel J and for Richards Bay see Panel K.



PAPER CHARTS

WALVIS BAY

LARGE SCALE INTERNATIONAL CHARTS

CHART NO	CHART TITLE	SCALE 1 :	N LAT (S)	S LAT (S)	W LONG (E)	E LONG (E)	PUB DATE	NE DATE
<b>INT 2612 SAN 1004</b>	Walvis Bay Harbour .....	15 000	22°50'00"	22°57'45"	14°25'54"	14°31'42"	Jul 2012	Nov 2019
<b>INT 2613 SAN 1005</b>	Approaches to Walvis Bay.....	40 000	22°38'00"	22°58'18"	14°18'00"	14°33'30"	Jul 2012	Nov 2019

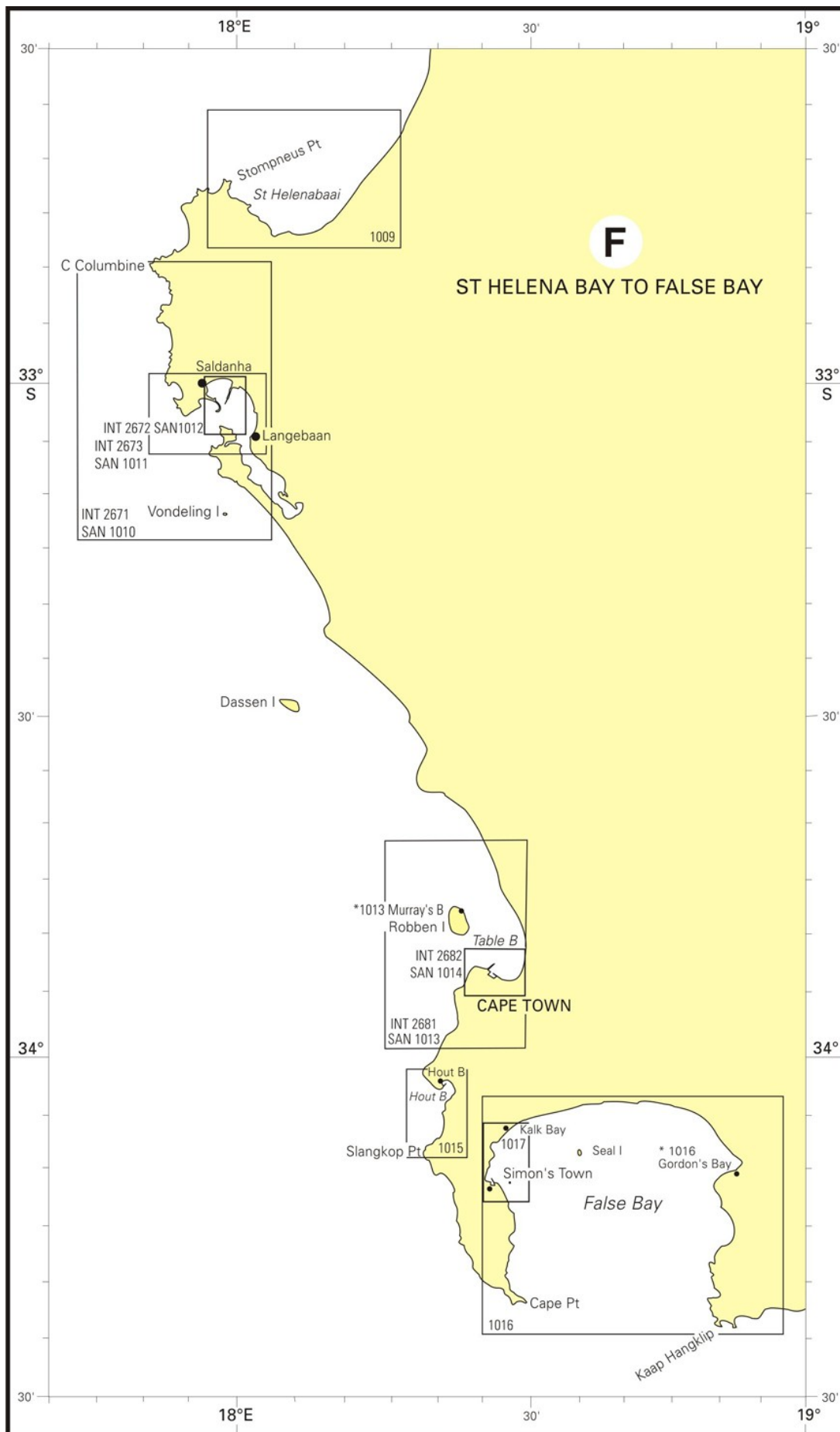
LÜDERITZ

LARGE SCALE INTERNATIONAL CHARTS

CHART NO	CHART TITLE	SCALE 1 :	N LAT (S)	S LAT (S)	W LONG (E)	E LONG (E)	PUB DATE	NE DATE
<b>INT 2631 SAN 1002</b>	Approaches to Lüderitz .....	30 000	26°30'06"	26°45'12"	14°59'06"	15°10'54"	Mar 1996	Jul 2005
	Lüderitz .....	15 000	26°37'00"	26°39'00"	15°08'12"	15°10'18"		

NOTES

1. Chart numbers in bold upright style are published WGS84 based charts e.g. **INT 2631 SAN 1002**
2. For smaller scale coverage see Panel A; for Oranjemund see Panel A or B.



PAPER CHARTS

**ST HELENA BAY TO SALDANHA BAY**

**LARGE SCALE INTERNATIONAL CHARTS**

CHART NO	CHART TITLE	SCALE 1 :	N LAT (S)	S LAT (S)	W LONG (E)	E LONG (E)	PUB DATE	NE DATE
<b>INT 2671 SAN 1010</b>	Approaches to Saldanha Bay.....	50 000	32°49'00"	33°14'27"	17°42'34"	18°03'45"	Apr 1978	Feb 2007
<b>INT 2673 SAN 1011</b>	Entrance to Saldanha Bay.....	20 000	32°59'24"	33°06'21"	17°51'00"	18°03'24"	Nov 1977	Mar 2022
<b>INT 2672 SAN 1012</b>	Saldanha Bay Harbour.....	10 000	32°59'36"	33°04'42"	17°56'42"	18°01'09"	Mar 1979	Mar 2022

**LARGE SCALE NATIONAL CHARTS**

CHART NO	CHART TITLE	SCALE 1 :	N LAT (S)	S LAT (S)	W LONG (E)	E LONG (E)	PUB DATE	NE DATE
SAN 1009	St Helenabaai .....	30000	32°37'24"	32°47'47"	17°57'00"	18°15'32"	Mar 1995	

**TABLE BAY TO FALSE BAY**

**LARGE SCALE INTERNATIONAL CHARTS**

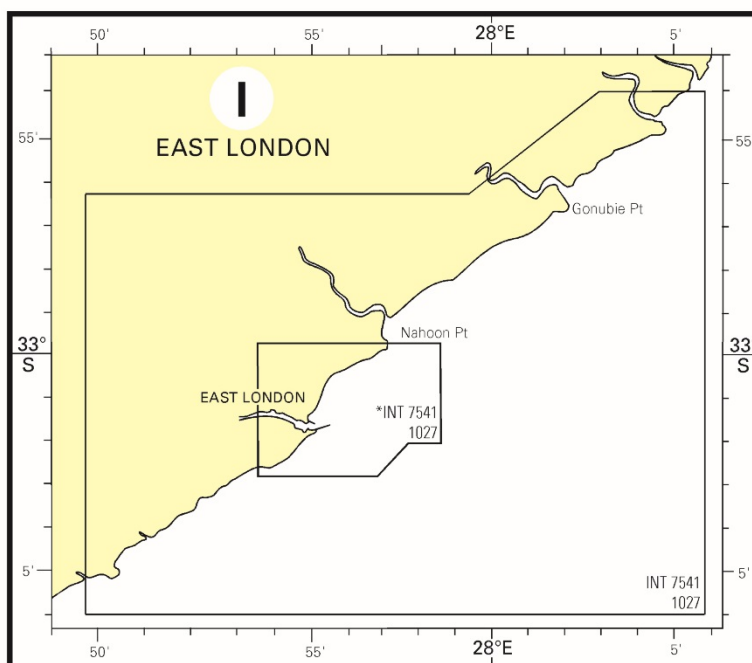
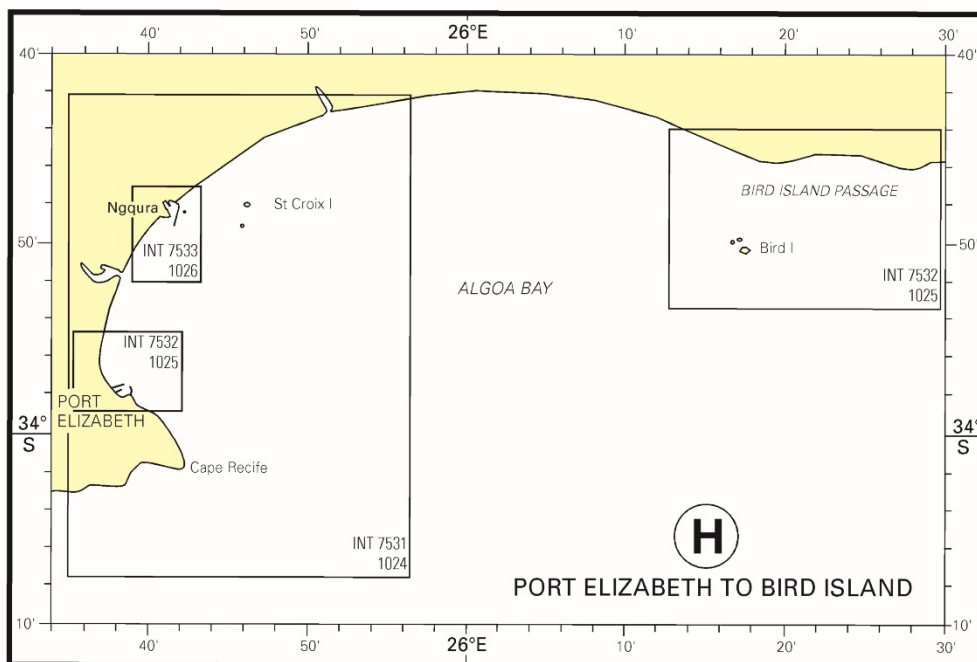
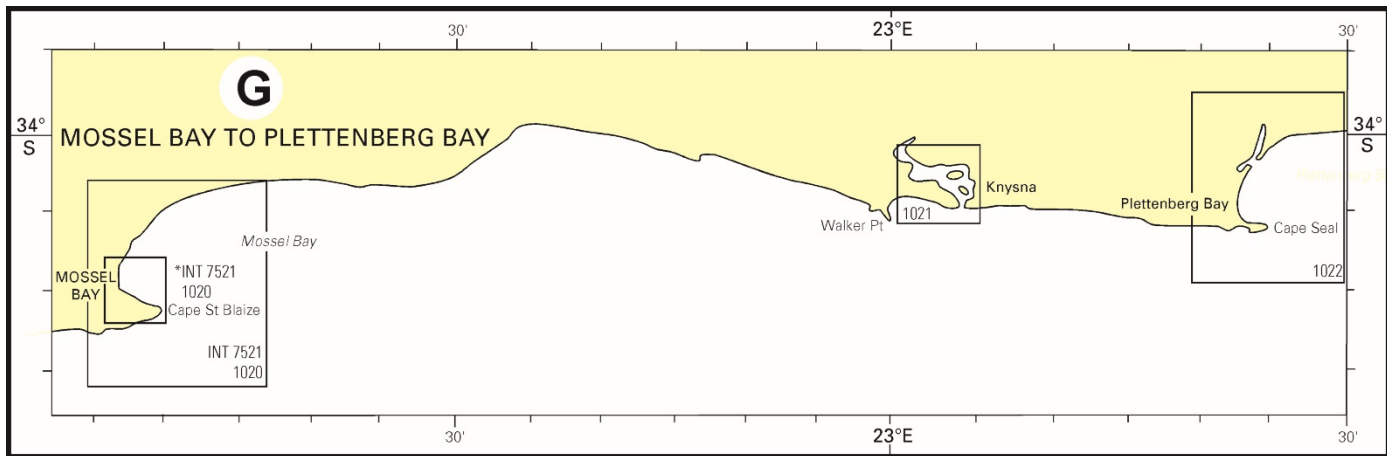
CHART NO	CHART TITLE	SCALE 1 :	N LAT (S)	S LAT (S)	W LONG (E)	E LONG (E)	PUB DATE	NE DATE
<b>INT 2681 SAN 1013</b>	Approaches to Table Bay .....	36 000	33°41'15"	33°59'30"	18°15'24"	18°30'54"	Aug 1978	Apr 2006
	Murray's Bay Harbour.....	6 000	33°47'42"	33°47'59"	18°22'24"	18°22'51"		
<b>INT 2682 SAN 1014</b>	Table Bay .....	10 000	33°51'50"	33°55'19"	18°23'10"	18°29'24"	May 2010	

**LARGE SCALE NATIONAL CHARTS**

CHART NO	CHART TITLE	SCALE 1 :	N LAT (S)	S LAT (S)	W LONG (E)	E LONG (E)	PUB DATE	NE DATE
<b>SAN 1015</b>	Houtbaai .....	15 000	34°01'19"	34°08'56"	18°16'55"	18°23'21"	Nov 1997	
<b>SAN 1016</b>	Valsbaai .....	50 000	34°04'18"	34°24'29"	18°25'00"	18°56'23"	Sep 1978	Jul 2007
	Gordon's Bay.....	7 500						
<b>SAN 1017</b>	Simon's Bay .....	10 000	34°07'25"	34°12'31"	18°25'27"	18°29'45"	Nov 1990	Mar 1998

NOTES

1. Chart numbers in bold upright style are published WGS84 based charts e.g. **INT 2671 SAN 1010**
2. Chart numbers in normal upright style are published Clarke 1880 based charts e.g. SAN 1009
3. For Alexander Bay, Hondeklip Bay, Port Nolloth and Lambert's Bay see Panel A or B.
4. For smaller scale coverage see Panel B.



PAPER CHARTS

**MOSSEL BAY**

**LARGE SCALE INTERNATIONAL CHARTS**

CHART NO	CHART TITLE	SCALE 1 :	N LAT (S)	S LAT (S)	W LONG (E)	E LONG (E)	PUB DATE	NE DATE
<b>INT 7521 SAN 1020</b>	Approaches to Mossel Bay.....	40 000	34°03'01"	34°16'42"	22°04'36"	22°16'54"	Nov 2004	Nov 2011
	Mossel Bay .....	10 000	34°07'54"	34°11'19"	22°06'12"	22°09'15"		

**KNYSNA AND PLETTENBERG BAY**

**LARGE SCALE NATIONAL CHARTS**

CHART NO	CHART TITLE	SCALE 1 :	N LAT (S)	S LAT (S)	W LONG (E)	E LONG (E)	PUB DATE	NE DATE
<b>SAN 1021</b>	Knysna .....	10 000	34°01'30"	34°06'36"	23°01'00"	23°05'18"	May 1976	Jul 2023
SAN 1022	Plettenbergbaai .....	25 000	33°57'00"	34°09'52"	23°19'06"	23°30'00"	Apr 1972	

**ALGOA BAY AND BIRD ISLAND PASSAGE**

**LARGE SCALE INTERNATIONAL CHARTS**

CHART NO	CHART TITLE	SCALE 1 :	N LAT (S)	S LAT (S)	W LONG (E)	E LONG (E)	PUB DATE	NE DATE
<b>INT 7531 SAN 1024</b>	Approaches to Port Elizabeth.....	50 000	33°42'12"	34°07'36"	25°35'00"	25°56'24"	Sep 1980	Mar 2015
<b>INT 7532 SAN 1025</b>	Plans in Algoa Bay .....						Jul 2002	Feb 2016
	Port Elizabeth.....	15 000	33°54'54"	33°58'48"	25°35'48"	25°42'14"		
	Bird Island Passage.....	40 000	33°44'00"	33°53'44"	26°12'48"	26°29'55"		
<b>INT 7533 SAN 1026</b>	Ngqura Harbour .....	10 000	33°47'00"	33°52'00"	25°39'00"	25°43'18"	Aug 2009	May 2014

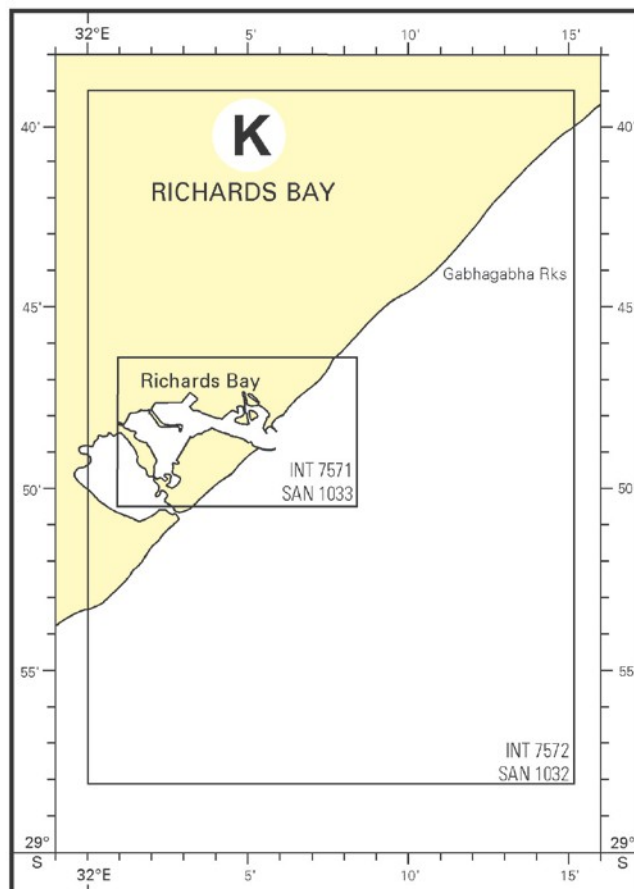
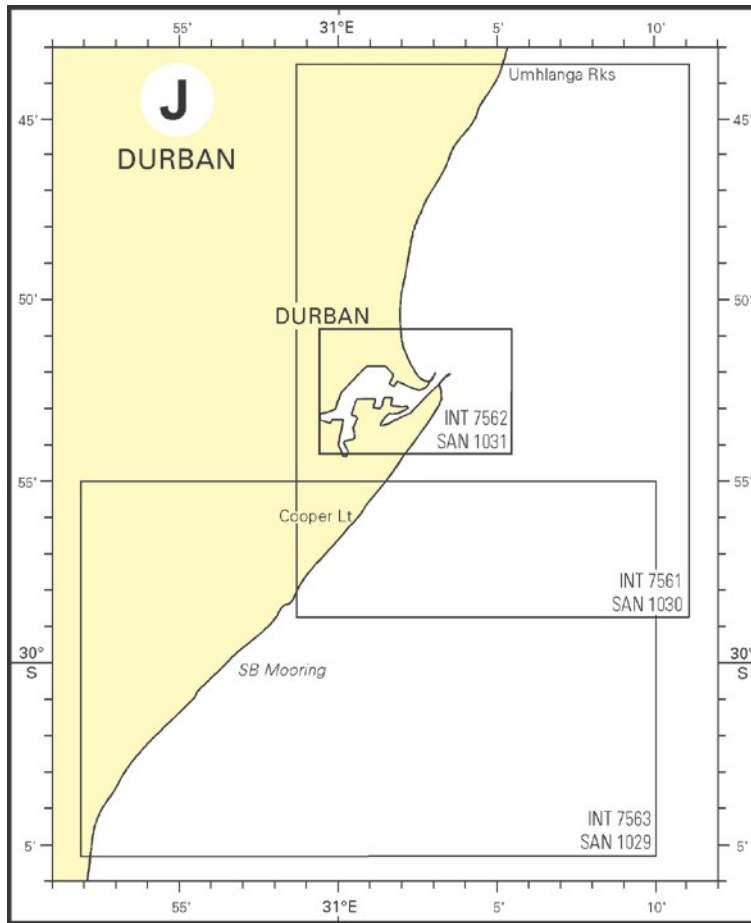
**EAST LONDON**

**LARGE SCALE INTERNATIONAL CHARTS**

CHART NO	CHART TITLE	SCALE 1 :	N LAT (S)	S LAT (S)	W LONG (E)	E LONG (E)	PUB DATE	NE DATE
<b>INT 7541 SAN 1027</b>	Approaches to East London .....	40 000	32°53'48"	33°06'00"	27°48'57"	28°05'54"	Nov 2004	
	East London .....	12 000	32°59'49"	33°02'51"	27°53'41"	28°58'44"		

NOTES

1. Chart numbers in bold upright style are published WGS84 based charts e.g. **INT 7521 SAN 1020**
2. Chart numbers in normal upright style are published Clarke 1880 based charts e.g. SAN 1022
3. For smaller scale coverage see Panel B.



**PAPER CHARTS  
DURBAN**

**LARGE SCALE INTERNATIONAL CHARTS**

CHART NO	CHART TITLE	SCALE 1 :	N LAT (S)	S LAT (S)	W LONG (E)	E LONG (E)	PUB DATE	NE DATE
<b>INT 7563 SAN 1029</b>	Approaches to Durban - Oil Terminal SBM .....	30 000	29°55'00"	30°04'18"	30°52'00"	31°10'00"	Apr 2015	
<b>INT 7561 SAN 1030</b>	Approaches to Durban .....	30 000	29°43'30"	29°58'46"	30°58'48"	31°11'06"	Dec 2003	Oct 2010
<b>INT 7562 SAN 1031</b>	Durban Harbour .....	10 000	29°50'50"	29°54'16"	30°59'28"	31°05'26"	Sep 1982	Oct 2010

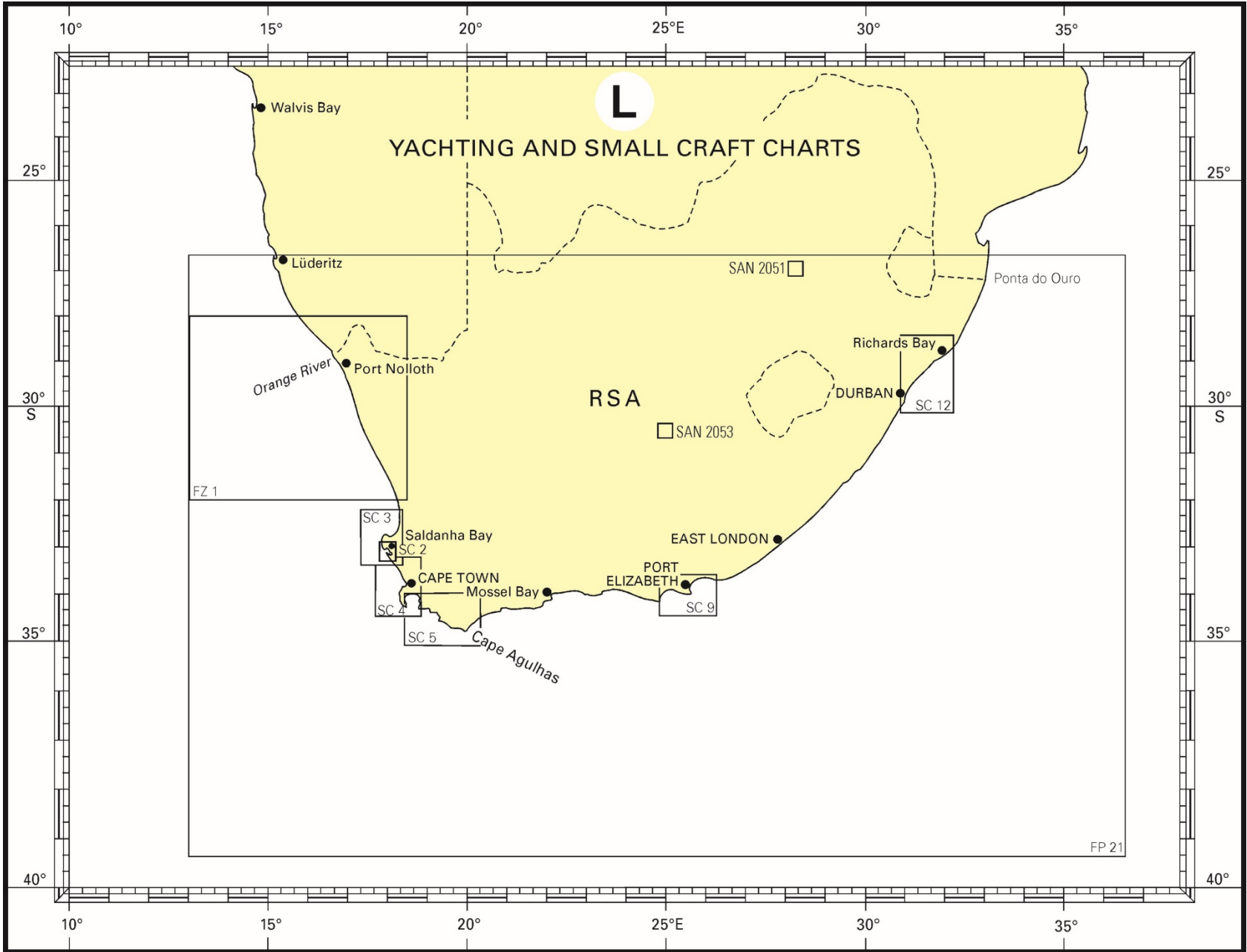
**RICHARDS BAY**

**LARGE SCALE INTERNATIONAL CHARTS**

CHART No	CHART TITLE	SCALE 1 :	N LAT (S)	S LAT (S)	W LONG (E)	E LONG (E)	PUB DATE	NE DATE
<b>INT 7572 SAN 1032</b>	Approaches to Richards Bay .....	37 500	28°39'00"	28°58'06"	32°00'00"	32°15'12"	Nov 1988	Feb 2010
<b>INT 7571 SAN 1033</b>	Richards Bay Harbour .....	12 500	28°46'14"	28°50'30"	32°01'00"	32°08'24"	May 1987	Mar 2008

NOTES

1. Chart numbers in bold upright style are published WGS84 based charts e.g. **INT 7562 SAN 1031**
2. For smaller scale coverage see Panel C.



## FISHING PLOTTING SHEETS

CHART NO	CHART TITLE	SCALE 1:	PUBLICATION DATE	NEW EDITION DATE
<b>SAN FZ 1</b>	Fishing Zone Boundaries	600 000	Nov 1988	
<b>SAN FP 21</b>	Orange River to Ponta do Ouro (Fishing Reference Grid)	2 450 000	Mar 1995	

## INFORMATION CHARTS

CHART NO	CHART TITLE	SCALE 1:	PUBLICATION DATE	NEW EDITION DATE
SAN 3001	General Maritime Information	3 500 000	May 2011	
SAN MZ 1	Maritime Zones	7 500 000	Oct 2014	Mar 2015

## INSTRUCTIONAL CHARTS

CHART NO	CHART TITLE	SCALE 1:	PUBLICATION DATE	NEW EDITION DATE
SAN 3002	Table Bay to Valsbaai	100 000	Nov 1981	Nov 1999

## PLOTTING SHEETS

CHART NO	CHART TITLE	SCALE 1:	CHART No	CHART TITLE	SCALE 1:
<b>SAN P1</b>	Mercator Plotting Sheet Lat 0° - 3°	670 000	<b>SAN P9</b>	Mercator Plotting Sheet Lat 24° - 27°	670 000
<b>SAN P2</b>	Mercator Plotting Sheet Lat 3° - 6°	670 000	<b>SAN P10</b>	Mercator Plotting Sheet Lat 27° - 30°	670 000
<b>SAN P3</b>	Mercator Plotting Sheet Lat 6° - 9°	670 000	<b>SAN P11</b>	Mercator Plotting Sheet Lat 30° - 33°	670 000
<b>SAN P4</b>	Mercator Plotting Sheet Lat 9° - 12°	670 000	<b>SAN P12</b>	Mercator Plotting Sheet Lat 33° - 36°	670 000
<b>SAN P5</b>	Mercator Plotting Sheet Lat 12° - 15°	670 000	<b>SAN P13</b>	Mercator Plotting Sheet Lat 36° - 39°	670 000
<b>SAN P6</b>	Mercator Plotting Sheet Lat 15° - 18°	670 000	<b>SAN P14</b>	Mercator Plotting Sheet Lat 39° - 42°	670 000
<b>SAN P7</b>	Mercator Plotting Sheet Lat 18° - 21°	670 000	<b>SAN P15</b>	Mercator Plotting Sheet Lat 42° - 45°	670 000
<b>SAN P8</b>	Mercator Plotting Sheet Lat 21° - 24°	670 000	<b>SAN P16</b>	Mercator Plotting Sheet Lat 45° - 48°	670 000
<b>SAN P21</b>	Dead Reckoning and Position Line Plotting Diagram	670 000	<b>SAN P22</b>	Plotting Diagram - Half Sheet	670 000

## SMALL CRAFT CHARTS

CHART NO	CHART TITLE	SCALE 1	PUBLISHED DATE	NEW EDITION DATE
SAN SC 2	Saldanha Bay and Langebaan Lagoon ..... Club Mykonos (6 000), Langebaan Yacht Club (2 000), Saldanha Small Craft Area (10 000)	30 000	Oct 1995	Mar 2022
<b>SAN SC 3</b>	Cape Deseada to Yzerfontein ..... Bergriviermond (20 000), Club Mykonos (6 000) House Bay, Dassen Island (12 000), Lambert's Bay (9 000), Langebaan Yacht Club (2 000), Port Owen (7 500), Saldanha Bay Yacht Club (6000) Sandy Point (15 000), Yzerfontein (6 000)	200 000	Oct 1991	Nov 2000
SAN SC 4	Yzerfontein to Kaap Hangklip ..... Ben Schoeman and Duncan Docks (10 000), Victoria and Alfred Basins (10 000), Gordon's Bay (7 500), Harbour Island (6 000), Houtbaai (7 500), Kalkbaai (6 000), Simon's Town (6 000), Yzerfontein (6 000)	200 000	Apr 1990	Mar 2000
<b>SAN SC 5</b>	False Bay to Cape Agulhas ..... Gansbaai (10 000), Gordon's Bay (7 500), Harbour Island (6 000), Hermanus (5 000), Kalkbaai (6 000), Simon's Town (6 000), Struisbaai (5 000)	260 000	Jun 1999	
<b>SAN SC 9</b>	Cape St Francis to Bird Island..... Bird Island Passage (60 000), Marina Glade (15 000), Port St Francis (5 000), Port Elizabeth (15 000)	200 000	Feb 2010	
<b>SAN SC 12</b>	Durban to Richards Bay ..... Durban Harbour (7 500), Richards Bay Harbour (10 000)	250 000	Jul 1996	May 2012

## YACHTING CHARTS

CHART NO	CHART TITLE	SCALE 1	PUBLISHED DATE	NEW EDITION DATE
<b>SAN 2051</b>	Vaaldam	50 000	Aug 2007	
<b>SAN 2053</b>	Gariep Dam	50 000	Aug 2011	
<b>SAN 2054</b>	Vanderkloof Dam	30 000	Oct 2014	

## EXERCISE AREA CHARTS

(\*) These Charts are not corrected for Notices to Mariners affecting navigation except where exercise areas information is to be amended.

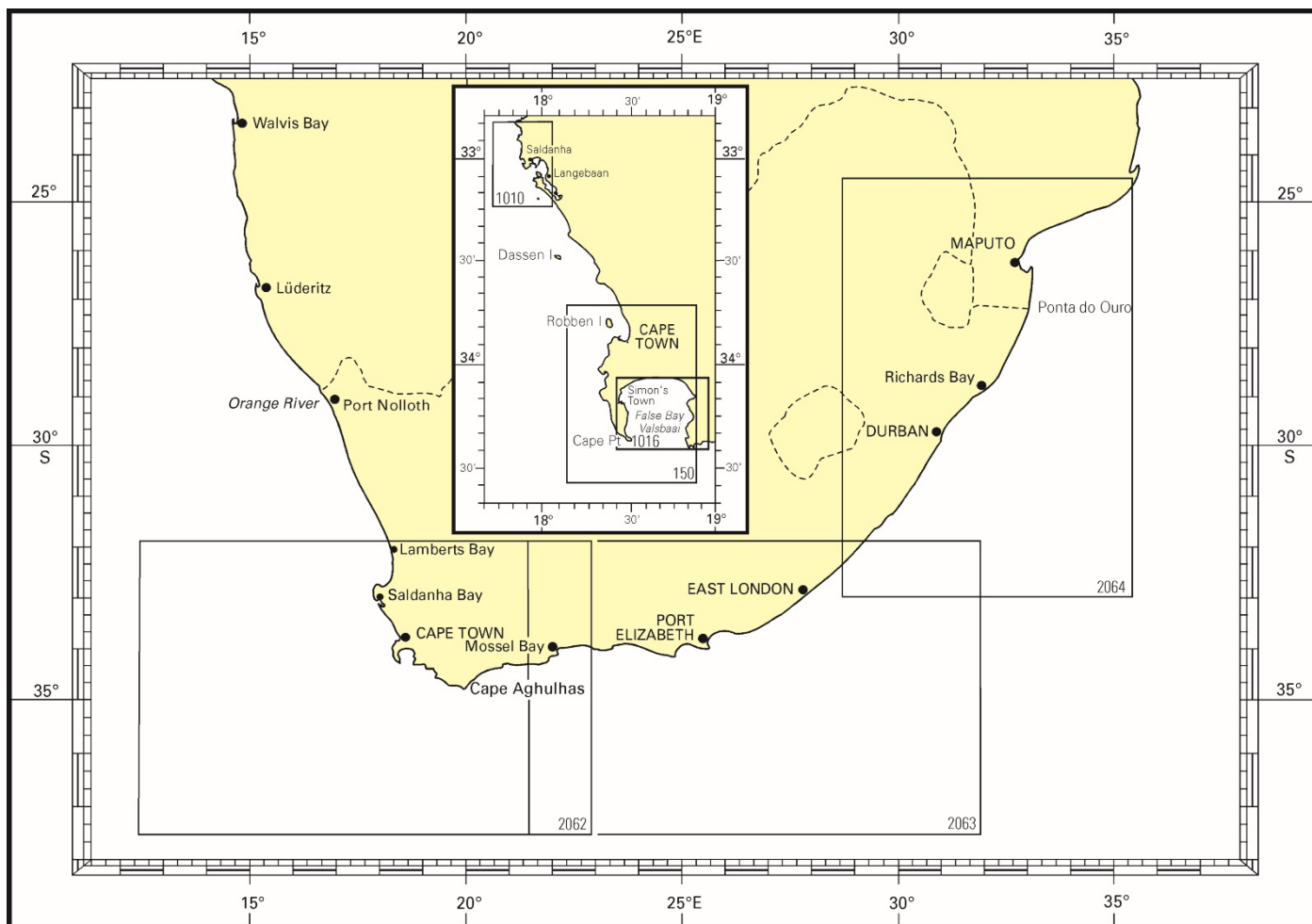


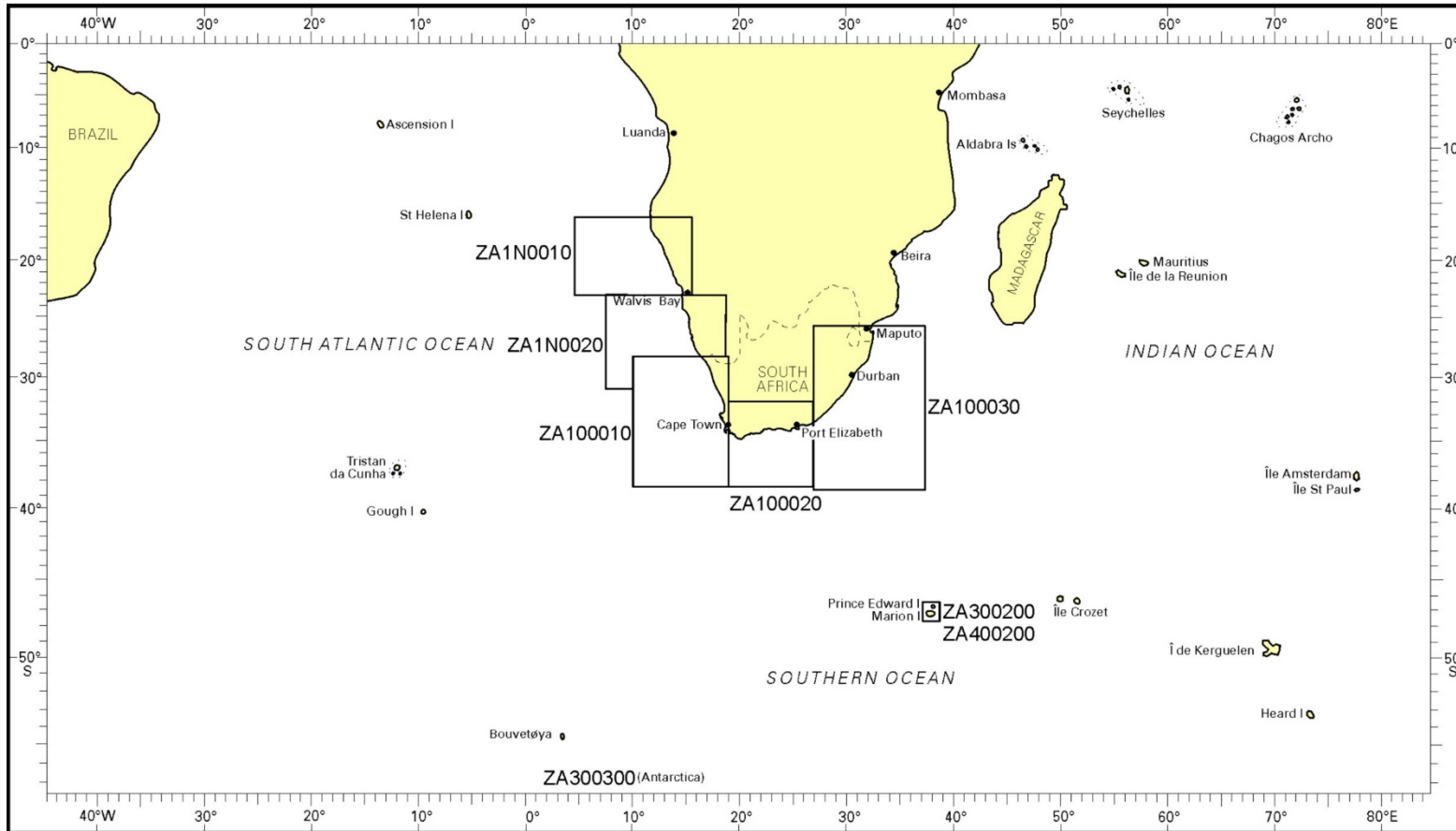
CHART NO	CHART TITLE	SCALE 1:	PUBLICATION DATE	PEXA EDITION DATE
PEXA SAN 150	Table Bay to Valsbaai .....	100 000	Sep 1978	Dec 2010
<b>PEXA SAN 1010</b>	Approaches to Saldanha Bay .....	50 000	Aug 1978	Nov 1997
<b>PEXA SAN 1016</b>	Valsbaai.....	50 000	Sep 1978	Dec 2010
<b>PEXA SAN 2062*</b>	Lamberts Bay to Knysna .....	1 000 000	Oct 1979	Feb 1986
<b>PEXA SAN 2063*</b>	Knysna to Mbashe River.....	1 000 000	Feb 1980	Feb 1986
<b>PEXA SAN 2064*</b>	Mbashe River to Maputo.....	1 000 000	Feb 1980	Feb 1986

### NOTES

1. Chart numbers in bold upright style are published WGS84 based charts e.g. **PEXA SAN 1016**
2. Chart numbers in normal upright style are published Clarke 1880 based charts e.g. PEXA SAN 150

**Intentional Blank Page**

### SMALL SCALE ENCs AND ENCs OF ISLANDS AND ANTARCTICA



**ELECTRONIC NAVIGATIONAL CHARTS**  
**SOUTH ATLANTIC OCEAN, INDIAN OCEAN AND ANTARCTICA**

**SMALL SCALE COVERAGE ENC<sub>s</sub>**

**OVERVIEW USAGE BAND**

ENC NO	ENC TITLE	DISPLAY SCALE:	N LAT (S)	S LAT (S)	W LONG (E)	E LONG (E)
<b>ZA1N0010</b>	Northern Waters of Namibia.....	700 000	16°20'00"	23°05'00"	4°30'00"	15°00'00"
<b>ZA1N0020</b>	Southern Waters of Namibia.....	700 000	23°05'00"	31°00'00"	7°30'00"	18°30'00"
<b>ZA100010</b>	Western Waters of South Africa .....	700 000	28°15'00"	38°30'00"	10°00'00"	19°00'00"
<b>ZA100020</b>	Southern Waters of South Africa .....	700 000	32°00'00"	38°30'00"	19°00'00"	26°52'00"
<b>ZA100030</b>	Eastern Waters of South Africa.....	700 000	25°50'00"	38°38'00"	26°52'00"	37°08'00"

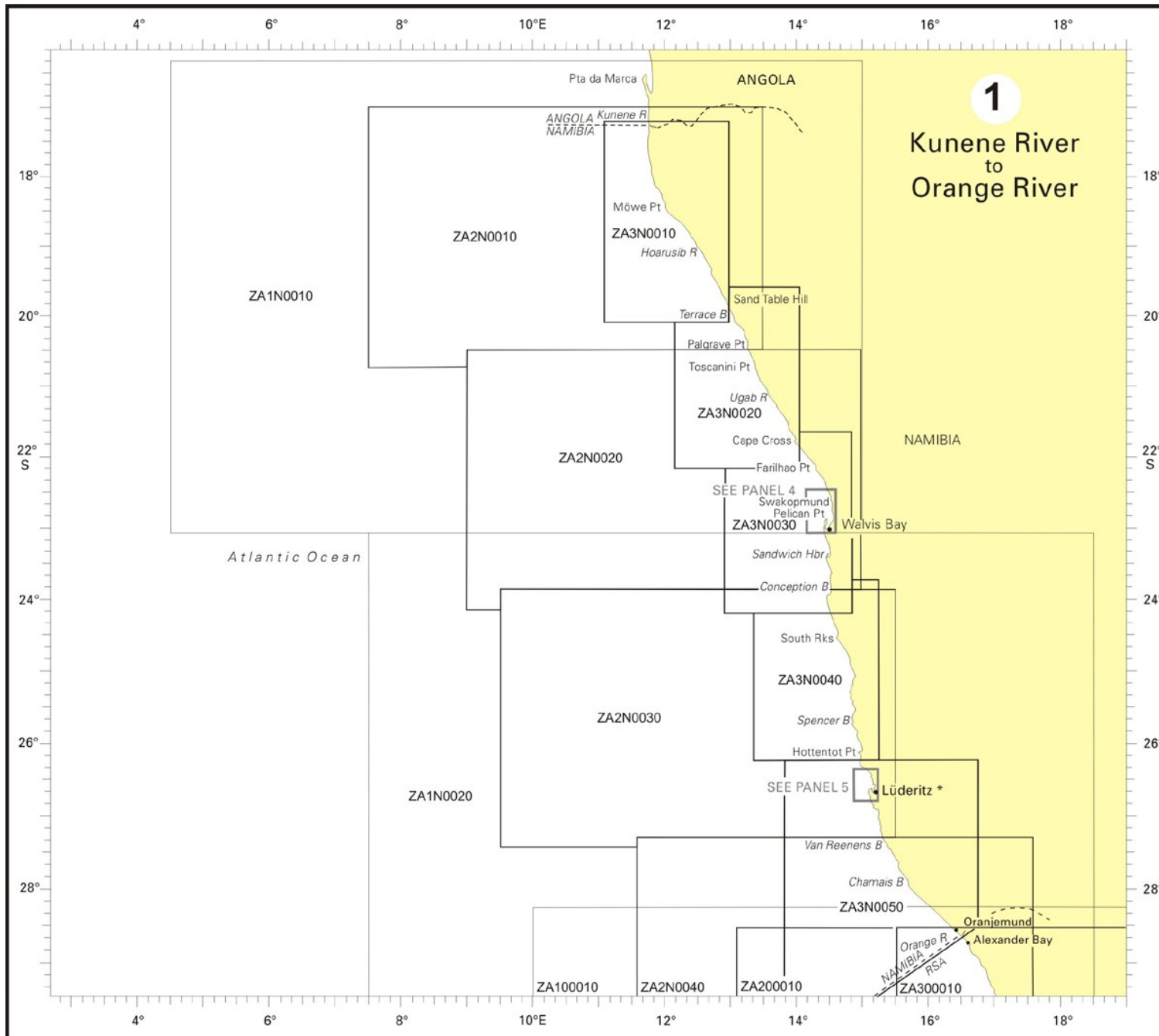
**ISLANDS AND ANTARCTICA ENC<sub>s</sub>**

**COASTAL USAGE BAND**

ENC NO	ENC TITLE	DISPLAY SCALE:	N LAT (S)	S LAT (S)	W LONG (E)	E LONG (E)
<b>ZA300200</b>	Marion Island .....	90 000	46°30'00"	47°04'00"	37°15'00"	38°30'00"
<b>ZA400200</b>	Marion Island (Transvaal Cove).....	22 000	46°50'30"	46°54'18"	37°49'48"	37°55'36"
<b>ZA300300</b>	Approaches to Dronning Maud Land .....	180 000	69°10'00"	71°41'00"	5°30'00"W	00°10'00"W

NOTES

1. All ENC<sub>s</sub> are WGS 84 based products.
2. ENC<sub>s</sub> numbers in bold upright style are published e.g. **ZA1N0010**



SOUTHERN AFRICA  
 NAMIBIA - WEST COAST  
 SOUTH AFRICA – WEST COAST

## ELECTRONIC NAVIGATIONAL CHARTS KUNENE RIVER TO ORANGE RIVER

### OVERVIEW USAGE BAND

ENC NO	ENC TITLE	DISPLAY SCALE:	N LAT (S)	S LAT (S)	W LONG (E)	E LONG (E)
<b>ZA1N0010</b>	Northern Waters of Namibia.....	700 000	16°20'00"	23°05'00"	4°30'00"	15°00'00"
<b>ZA1N0020</b>	Southern Waters of Namibia.....	700 000	23°05'00"	31°00'00"	7°30'00"	18°30'00"
<b>ZA100010</b>	Western Waters of South Africa.....	700 000	28°15'00"	38°30'00"	10°00'00"	19°00'00"

### GENERAL USAGE BAND

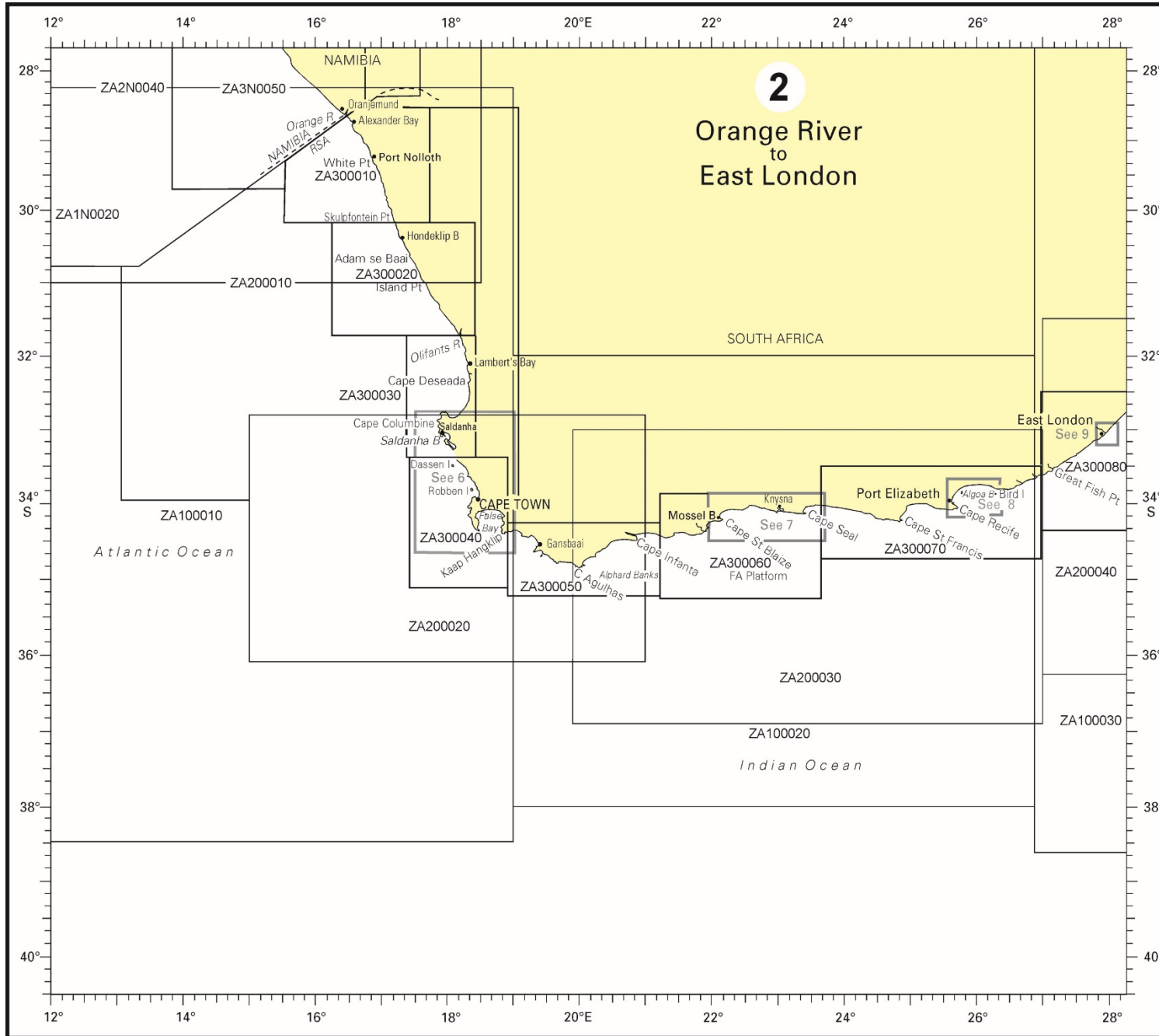
ENC NO	ENC TITLE	DISPLAY SCALE:	N LAT (S)	S LAT (S)	W LONG (E)	E LONG (E)
<b>ZA2N0010</b>	Kunene River to Palgrave Point.....	350 000	17°00'00"	20°45'30"	7°30'00"	13°30'00"
<b>ZA2N0020</b>	Huab River to Conception Bay .....	350 000	20°30'00"	24°10'00"	9°00'00"	15°00'00"
<b>ZA2N0030</b>	Meob Bay to Elizabeth Bay.....	350 000	23°52'19"	27°27'00"	9°30'00"	15°30'00"
<b>ZA2N0040</b>	Driemasterpunt to Orange River .....	350 000	27°18'50"	30°47'00"	11°35'00"	17°35'00"
<b>ZA200010</b>	Orange River to Stompneuspunt.....	350 000	28°32'00"	33°57'00"	13°06'00"	19°06'00"

### COASTAL USAGE BAND

ENC NO	ENC TITLE	DISPLAY SCALE:	N LAT (S)	S LAT (S)	W LONG (E)	E LONG (E)
<b>ZA3N0010</b>	Kunene River to Sand Table Hill .....	180 000	17°13'00"	19°49'30"	11°06'30"	13°00'00"
<b>ZA3N0020</b>	Terrace Bay to Cape Cross .....	180 000	19°20'00"	21°54'48"	12°10'00"	14°03'42"
<b>ZA3N0030</b>	Farihao Point to Conception Bay.....	180 000	21°40'00"	24°12'00"	12°56'30"	14°50'00"
<b>ZA3N0040</b>	Meob Bay to Hottentot Point.....	180 000	23°45'00"	26°14'30"	13°21'30"	15°15'00"
<b>ZA3N0050</b>	Douglas Point to Orange River.....	180 000	26°14'30"	29°42'00"	13°50'00"	16°45'00"
<b>ZA300010</b>	Oranjemund to Skulptfonteinpunt.....	90 000	28°32'00"	30°10'24"	15°31'00"	17°44'24"

#### NOTES

1. All ENCs are WGS 84 based products.
2. ENCs numbers in bold upright style are published e.g. **ZA3N0010**
3. For Walvis Bay coverage see Panel 4; for Lüderitz coverage see Panel 5.



**ELECTRONIC NAVIGATIONAL CHARTS  
ORANGE RIVER TO EAST LONDON**

**OVERVIEW USAGE BAND**

ENC NO	ENC TITLE	DISPLAY SCALE:	N LAT (S)	S LAT (S)	W LONG (E)	E LONG (E)
<b>ZA1N0020</b>	Southern Waters of Namibia.....	700 000	23°05'00"	31°00'00"	7°30'00"	18°30'00"
<b>ZA100010</b>	Western Waters of South Africa.....	700 000	28°15'00"	38°30'00"	10°00'00"	19°00'00"
<b>ZA100020</b>	Southern Waters of South Africa.....	700 000	32°00'00"	38°30'00"	19°00'00"	26°52'00"
<b>ZA100030</b>	Eastern Waters of South Africa.....	700 000	25°50'00"	38°38'00"	26°52'00"	37°08'00"

**GENERAL USAGE BAND**

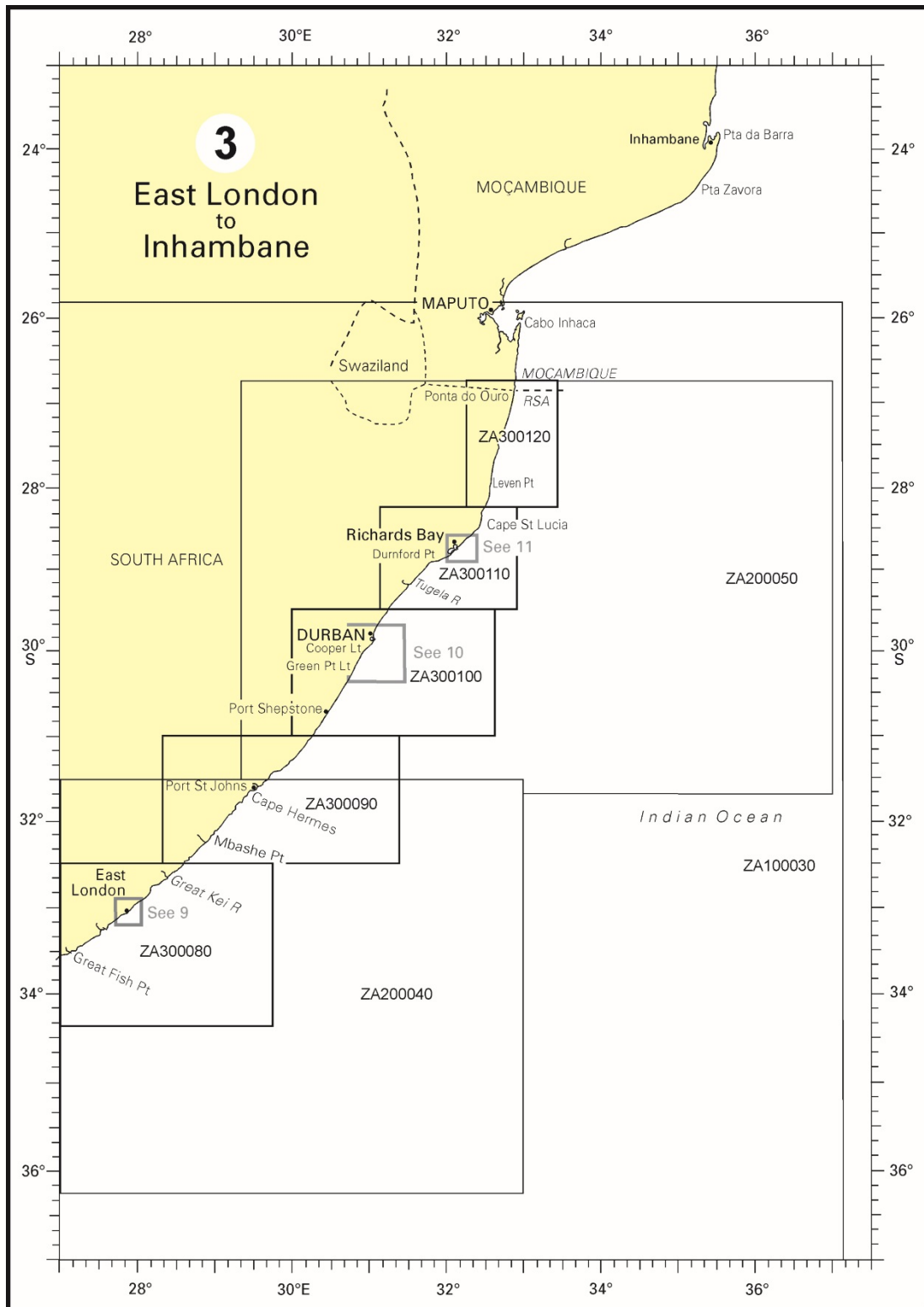
ENC NO	ENC TITLE	DISPLAY SCALE:	N LAT (S)	S LAT (S)	W LONG (E)	E LONG (E)
<b>ZA2N0040</b>	Driemasterpunt to Orange River.....	350 000	27°18'52"	30°47'00"	11°34'58"	17°35'00"
<b>ZA200010</b>	Orange River to Stompneuspunt.....	350 000	28°32'00"	33°57'00"	13°06'00"	19°06'00"
<b>ZA200020</b>	Cape Columbine to Cape Infanta.....	350 000	32°49'00"	36°06'00"	15°00'00"	21°00'00"
<b>ZA200030</b>	Cape Barracouta to Cape Padrone.....	350 000	33°00'00"	36°54'14"	19°54'00"	27°00'00"
<b>ZA200040</b>	Great Fish Point to Cape Hermes.....	350 000	31°30'00"	36°15'48"	27°00'00"	33°00'00"

**COASTAL USAGE BAND**

ENC NO	ENC TITLE	DISPLAY SCALE:	N LAT (S)	S LAT (S)	W LONG (E)	E LONG (E)
<b>ZA3N0050</b>	Douglas Point to Orange River.....	180 000	26°14'30"	29°42'00"	13°50'00"	16°45'00"
<b>ZA300010</b>	Oranjemund to Skulpfonteinpunt.....	90 000	28°32'00"	30°10'24"	15°31'00"	17°44'24"
<b>ZA300020</b>	Hondeklipbaai to Olifantsrivier.....	90 000	30°10'24"	31°44'24"	16°14'00"	18°24'48"
<b>ZA300030</b>	Doringbaai to Yzerfonteinpunt.....	90 000	31°44'24"	33°23'00"	17°22'00"	18°25'00"
<b>ZA300040</b>	Dassen Island to Kaap Hangklip.....	90 000	33°23'00"	35°07'24"	17°26'12"	18°54'30"
<b>ZA300050</b>	Mudge Point to Cape Infanta.....	90 000	34°16'12"	35°13'36"	18°54'30"	21°13'00"
<b>ZA300060</b>	Cape Barracouta to Cape Seal.....	90 000	33°52'00"	35°16'12"	21°13'00"	23°39'24"
<b>ZA300070</b>	Storm Point to Port Alfred.....	90 000	33°30'12"	34°44'24"	23°39'24"	26°58'00"
<b>ZA300080</b>	Great Fish Point to Cape Morgan.....	90 000	32°30'00"	34°21'24"	26°58'00"	29°44'48"

NOTES

1. All ENC's are WGS 84 based products.
2. ENC's numbers in bold upright style are published e.g. **ZA1N0020**
3. For Saldanha Bay, Table Bay and False Bay coverage see Panel 6; for Mossel Bay coverage see Panel 7; for Algoa Bay and Bird Island coverage see Panel 8 and for East London coverage see Panel 9.



ELECTRONIC NAVIGATIONAL CHARTS  
EAST LONDON TO INHAMBANE

OVERVIEW USAGE BAND

ENC NO	ENC TITLE	DISPLAY SCALE:	N LAT (S)	S LAT (S)	W LONG (E)	E LONG (E)
<b>ZA100030</b>	Eastern Waters of South Africa.....	700 000	25°50'00"	38°38'00"	26°52'00"	37°08'00"

GENERAL USAGE BAND

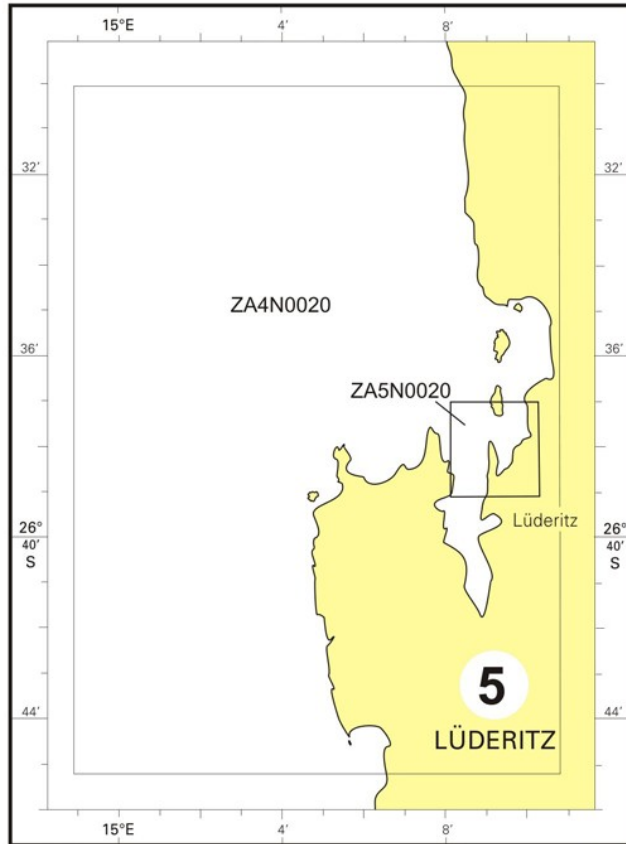
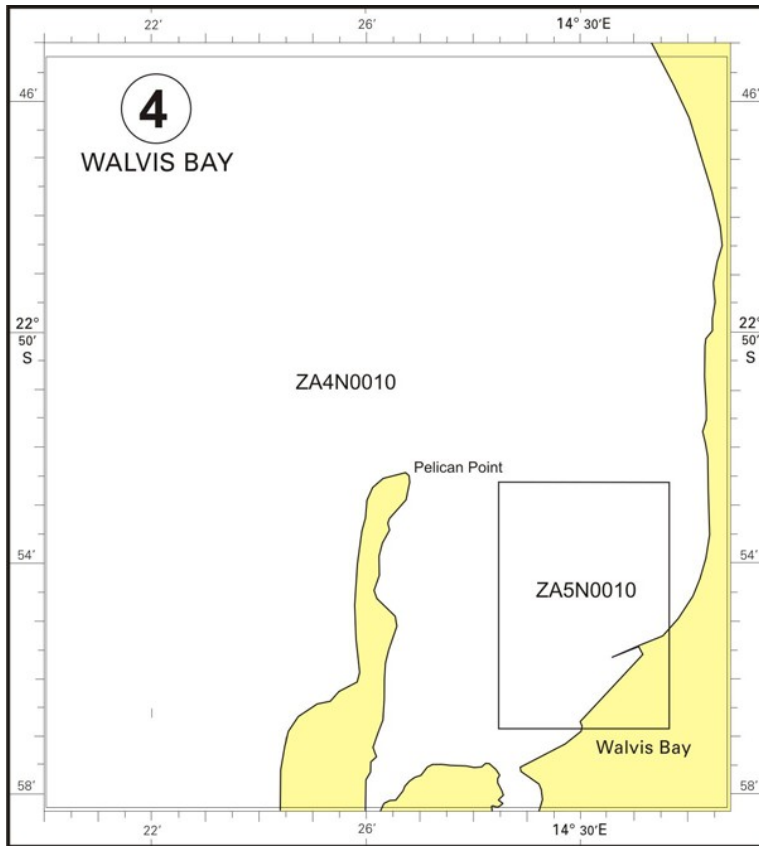
ENC NO	ENC TITLE	DISPLAY SCALE:	N LAT (S)	S LAT (S)	W LONG (E)	E LONG (E)
<b>ZA200040</b>	Great Fish Point to Cape Hermes.....	350 000	31°30'00"	36°15'48"	27°00'00"	33°00'00"
<b>ZA200050</b>	South Sand Bluff to Ponta do Ouro.....	350 000	26°45'12"	31°40'00"	29°20'00"	37°00'00"

COASTAL USAGE BAND

ENC NO	ENC TITLE	DISPLAY SCALE:	N LAT (S)	S LAT (S)	W LONG (E)	E LONG (E)
<b>ZA300080</b>	Great Fish Point to Cape Morgan.....	90 000	32°30'00"	34°21'24"	26°58'00"	29°44'48"
<b>ZA300090</b>	Mbashe Point to North Sand Bluff.....	90 000	31°00'00"	32°30'00"	28°19'00"	31°21'48"
<b>ZA300100</b>	Port Shepstone to Tongaat Bluff.....	90 000	29°28'30"	31°00'00"	30°00'00"	32°37'12"
<b>ZA300110</b>	Tugela River to Cape St Lucia.....	90 000	28°15'00"	29°28'30"	31°08'00"	32°53'48"
<b>ZA300120</b>	Cape Vidal to Ponta do Ouro.....	90 000	26°45'12"	28°15'00"	32°15'00"	33°26'48"

NOTES

1. All ENCs are WGS 84 based products.
2. ENCs numbers in bold upright style are published e.g. **ZA100030**
3. For East London coverage see Panel 9; for Durban Oil Terminal and Durban coverage see Panel 10 and for Richards Bay see Panel 11.



## WALVIS BAY TO LÜDERITZ

### ELECTRONIC NAVIGATIONAL CHARTS

#### WALVIS BAY

##### HARBOUR USAGE BAND

ENC NO	ENC TITLE	DISPLAY SCALE:	N LAT (S)	S LAT (S)	W LONG (E)	E LONG (E)
<b>ZA5N0010</b>	Walvis Bay Harbour .....	12 000	22°52'36"	22°57'45"	14°28'30"	14°31'41"

##### APPROACHES USAGE BAND

ENC NO	ENC TITLE	DISPLAY SCALE:	N LAT (S)	S LAT (S)	W LONG (E)	E LONG (E)
<b>ZA4N0010</b>	Approaches to Walvis Bay.....	22 000	22°45'24"	22°58'18"	14°20'00"	14°32'48"

#### LÜDERITZ

##### HARBOUR USAGE BAND

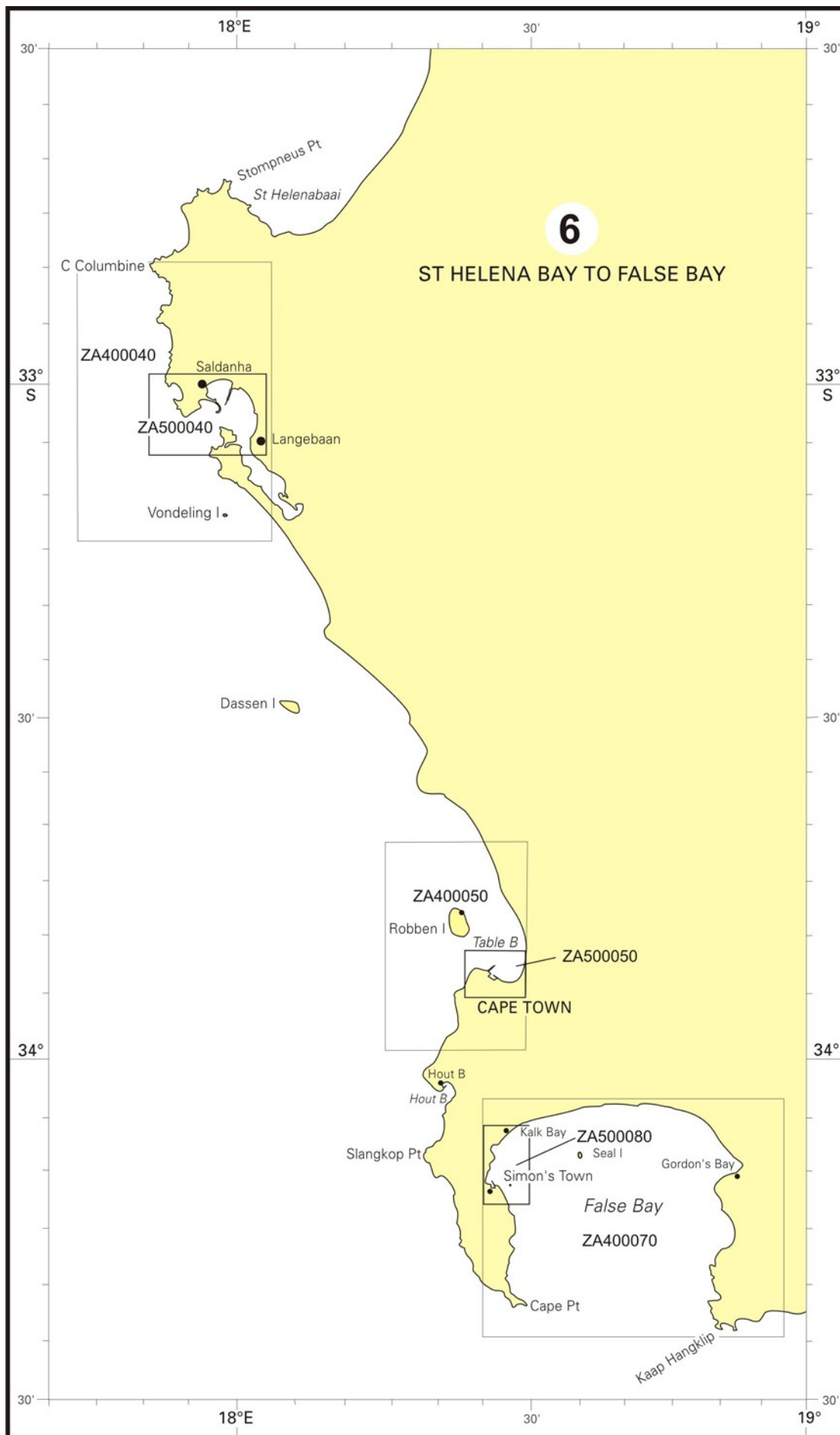
ENC NO	ENC TITLE	DISPLAY SCALE:	N LAT (S)	S LAT (S)	W LONG (E)	E LONG (E)
<b>ZA5N0020</b>	Lüderitz Harbour .....	12 000	26°37'00"	26°39'00"	15°08'12"	15°10'18"

##### APPROACHES USAGE BAND

ENC NO	ENC TITLE	DISPLAY SCALE:	N LAT (S)	S LAT (S)	W LONG (E)	E LONG (E)
<b>ZA4N0020</b>	Approaches to Lüderitz .....	22 000	26°30'06"	26°45'12"	14°59'06"	15°10'54"

#### NOTES

1. All ENC's are WGS 84 based products.
2. ENC's numbers in bold upright style are published e.g. **ZA5N0010**
3. For smaller scale ENC coverage see Panel 1.



## SALDANHA BAY to FALSE BAY

### ELECTRONIC NAVIGATIONAL CHARTS

#### SALDANHA BAY

##### HARBOUR USAGE BAND

ENC NO	ENC TITLE	DISPLAY SCALE:	N LAT (S)	S LAT (S)	W LONG (E)	E LONG (E)
<b>ZA500040</b>	Saldanha Bay.....	12 000	32°59'25"	33°06'21"	17°50'58"	18°03'21"

##### APPROACHES USAGE BAND

ENC NO	ENC TITLE	DISPLAY SCALE:	N LAT (S)	S LAT (S)	W LONG (E)	E LONG (E)
<b>ZA400040</b>	Approaches to Saldanha Bay.....	45 000	32°49'00"	33°14'27"	17°42'34"	18°03'45"

#### TABLE BAY

##### HARBOUR USAGE BAND

ENC NO	ENC TITLE	DISPLAY SCALE:	N LAT (S)	S LAT (S)	W LONG (E)	E LONG (E)
<b>ZA500050</b>	Table Bay.....	8 000	33°51'50"	33°55'19"	18°23'10"	18°29'24"

##### APPROACHES USAGE BAND

ENC NO	ENC TITLE	DISPLAY SCALE:	N LAT (S)	S LAT (S)	W LONG (E)	E LONG (E)
<b>ZA400050</b>	Approaches to Table Bay.....	22 000	33°41'15"	33°59'30"	18°15'24"	18°30'54"

#### FALSE BAY

##### HARBOUR USAGE BAND

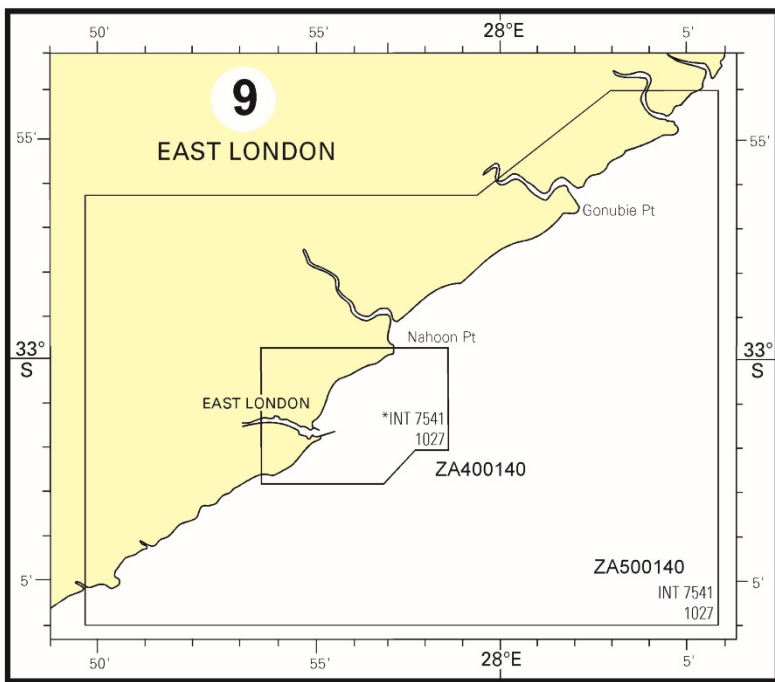
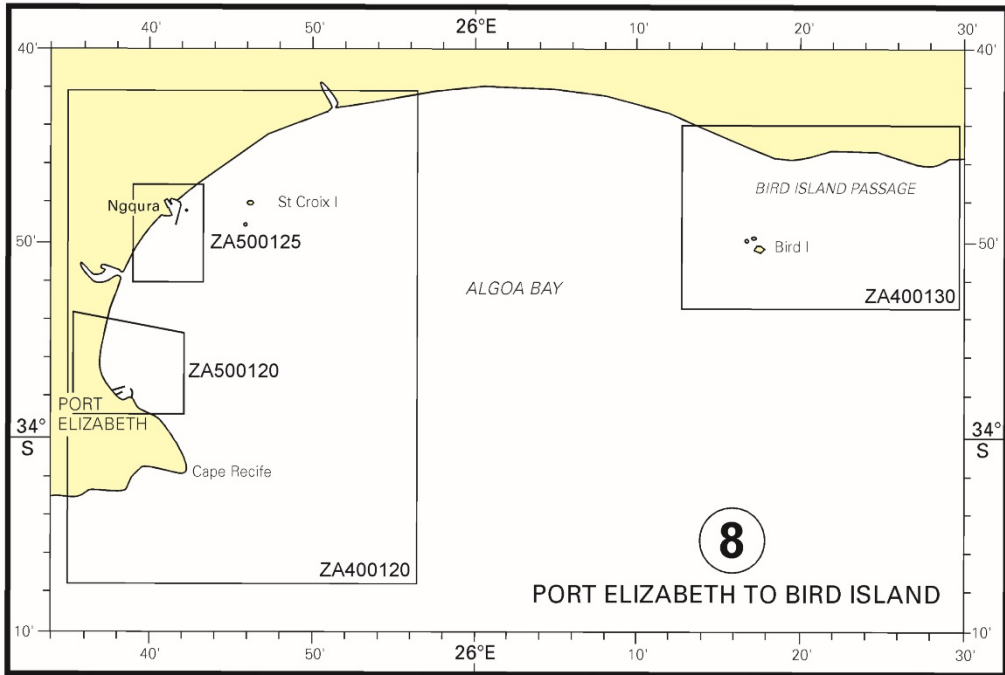
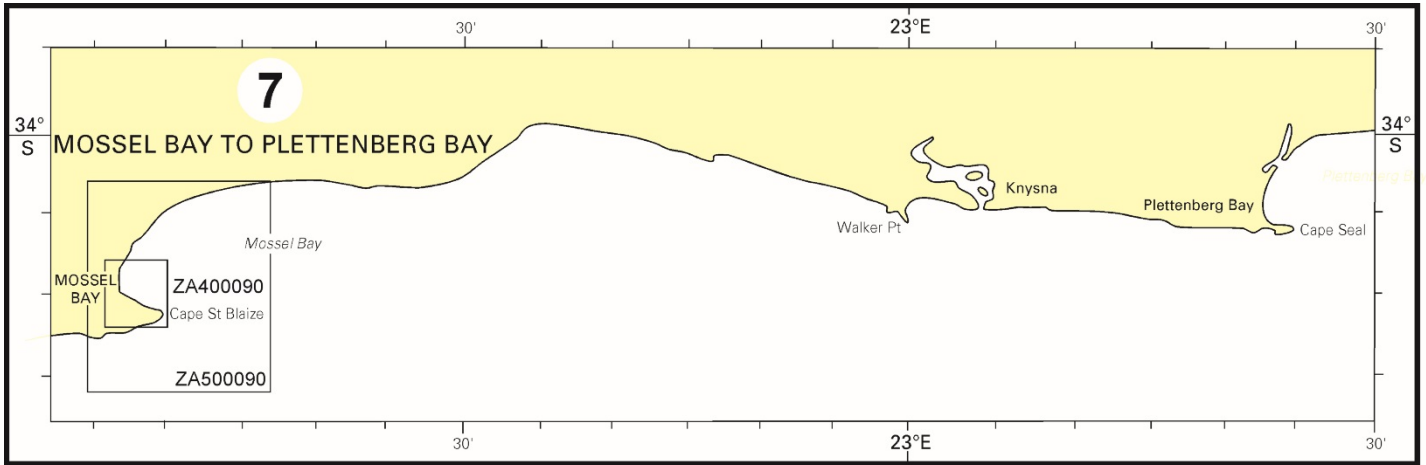
ENC NO	ENC TITLE	DISPLAY SCALE:	N LAT (S)	S LAT (S)	W LONG (E)	E LONG (E)
<b>ZA500080</b>	Simon's Bay.....	8 000	34°07'25"	34°12'31"	18°25'27"	18°29'45"

##### APPROACHES USAGE BAND

ENC NO	ENC TITLE	DISPLAY SCALE:	N LAT (S)	S LAT (S)	W LONG (E)	E LONG (E)
<b>ZA400070</b>	False Bay.....	45 000	34°04'18"	34°24'29"	18°25'00"	18°56'23"

#### NOTES

1. All ENCs are WGS 84 based products.
2. ENCs numbers in bold upright style are published e.g. **ZA500040**
3. For smaller scale ENC coverage see Panel 2.



## MOSSEL BAY to EAST LONDON

### ELECTRONIC NAVIGATIONAL CHARTS

#### MOSSEL BAY

##### HARBOUR USAGE BAND

ENC NO	ENC TITLE	DISPLAY SCALE:	N LAT (S)	S LAT (S)	W LONG (E)	E LONG (E)
<b>ZA500090</b>	Mossel Bay Harbour .....	8 000	34°07'54"	34°11'19"	22°06'12"	22°09'15"

##### APPROACHES USAGE BAND

ENC NO	ENC TITLE	DISPLAY SCALE:	N LAT (S)	S LAT (S)	W LONG (E)	E LONG (E)
<b>ZA400090</b>	Approaches to Mossel Bay.....	22 000	34°03'01"	34°16'42"	22°04'36"	22°16'54"

#### PORT ELIZABETH to BIRD ISLAND PASSAGE

##### HARBOUR USAGE BAND

ENC NO	ENC TITLE	DISPLAY SCALE:	N LAT (S)	S LAT (S)	W LONG (E)	E LONG (E)
<b>ZA500120</b>	Port Elizabeth Harbour .....	12 000	33°54'54"	33°58'48"	25°35'48"	25°42'14"
<b>ZA500125</b>	Ngqura Harbour .....	8 000	33°47'00"	33°52'00"	25°39'00"	25°43'18"

##### APPROACHES USAGE BAND

ENC NO	ENC TITLE	DISPLAY SCALE:	N LAT (S)	S LAT (S)	W LONG (E)	E LONG (E)
<b>ZA400120</b>	Approaches to Port Elizabeth.....	45 000	33°42'12"	34°07'36"	25°35'00"	25°56'24"
<b>ZA400130</b>	Bird Island Passage.....	22 000	33°44'00"	33°53'44"	26°12'48"	26°29'55"

#### EAST LONDON

##### HARBOUR USAGE BAND

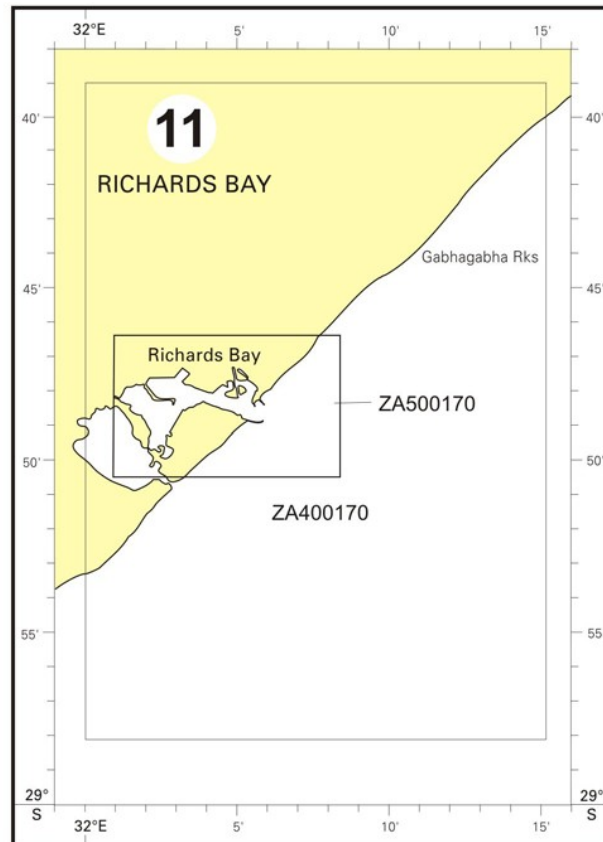
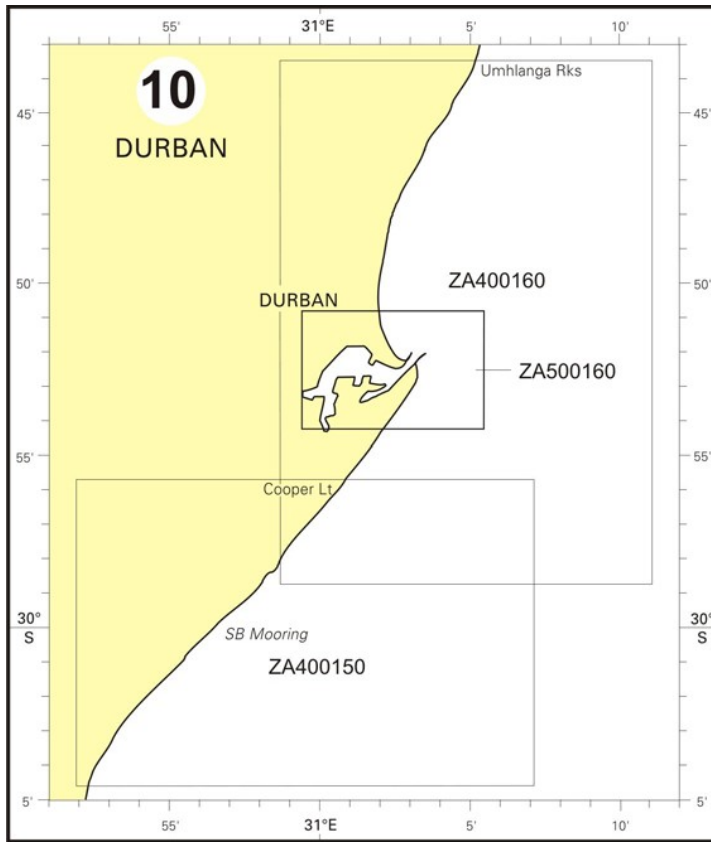
ENC NO	ENC TITLE	DISPLAY SCALE:	N LAT (S)	S LAT (S)	W LONG (E)	E LONG (E)
<b>ZA500140</b>	East London Harbour.....	12 000	32°49'58"	33°02'51"	27°53'41"	27°58'44"

##### APPROACHES USAGE BAND

ENC NO	ENC TITLE	DISPLAY SCALE:	N LAT (S)	S LAT (S)	W LONG (E)	E LONG (E)
<b>ZA400140</b>	Approaches to East London .....	22 000	32°53'48"	33°06'00"	27°48'57"	28°05'54"

#### NOTES

1. All ENCs are WGS 84 based products.
2. ENCs numbers in bold upright style are published e.g. **ZA500090**
3. For smaller scale ENC coverage see Panels 2 and 3.



## DURBAN to RICHARDS BAY

### ELECTRONIC NAVIGATIONAL CHARTS

#### DURBAN

##### HARBOUR USAGE BAND

ENC NO	ENC TITLE	DISPLAY SCALE:	N LAT (S)	S LAT (S)	W LONG (E)	E LONG (E)
<b>ZA500160</b>	Durban Harbour .....	8 000	29°50'50"	29°54'16"	30°59'28"	31°05'26"

##### APPROACHES USAGE BAND

ENC NO	ENC TITLE	DISPLAY SCALE:	N LAT (S)	S LAT (S)	W LONG (E)	E LONG (E)
<b>ZA400150</b>	Durban Oil Terminal.....	22 000	29°55'49"	30°04'31"	30°52'00"	31°07'12"
<b>ZA400160</b>	Approaches to Durban .....	22 000	29°43'30"	29°58'46"	30°58'48"	31°11'06"

#### RICHARDS BAY

##### HARBOUR USAGE BAND

ENC NO	ENC TITLE	DISPLAY SCALE:	N LAT (S)	S LAT (S)	W LONG (E)	E LONG (E)
<b>ZA500170</b>	Richards Bay Harbour .....	12 000	28°46'14"	28°50'30"	32°01'00"	32°08'24"

##### APPROACHES USAGE BAND

ENC NO	ENC TITLE	DISPLAY SCALE:	N LAT (S)	S LAT (S)	W LONG (E)	E LONG (E)
<b>ZA400170</b>	Approaches to Richards Bay.....	22 000	28°39'00"	28°58'05"	32°00'00"	32°15'12"

#### NOTES

1. All ENC's are WGS 84 based products.
2. ENC's numbers in bold upright style are published e.g. **ZA500160**
3. For smaller scale ENC coverage see Panel 3.

## HYDROGRAPHIC PUBLICATIONS

### LIST OF LIGHTS AND RADIO SERVICES

PUBLICATION NO	TITLE	DESCRIPTION
SAN HO-1	South African List of Lights and Radio Signals	Navigational aids on the coasts of Namibia and Republic of South Africa from Möwe Point to Ponta do Ouro, Atlantic and Indian Oceans. Radio Services for navigation and communications. Weather Bulletins. 2025 Edition.

### TIDE TABLES

PUBLICATION NO	TITLE	DESCRIPTION
SAN HO-2	South African Tide Tables	Tide Tables and Sunrise, Sunset, Moonrise and Moonset tables for Walvis Bay, Lüderitz, Port Nolloth, Saldanha, Cape Town, Simon's Town, Hermanus, Mossel Bay, Knysna, Port Elizabeth, East London, Durban and Richards Bay. Height of the tide at every hour, at all places, is also tabulated. Published annually.

### CHART CATALOGUE

PUBLICATION NO	TITLE	DESCRIPTION
* SAN HO-3	Catalogue and Indexes of SAN Charts and Hydrographic Publications	Catalogue and Indexes of South African Charts and other Hydrographic Publications. Published annually. Only available in digital PDF format at <a href="http://www.sanho.co.za">www.sanho.co.za</a> .

### SYMBOLS AND ABBREVIATIONS

PUBLICATION NO	TITLE	DESCRIPTION
SAN HO-6 (INT 1)	Symbols and Abbreviations	Symbols and abbreviations used on South African charts. Sixth Edition 2017.

### COLREGS

PUBLICATION NO	TITLE	DESCRIPTION
SAN HO-15	International Regulations for Preventing Collisions at Sea 1972	2020 Edition.

### SAILING DIRECTIONS

PUBLICATION NO	TITLE	DESCRIPTION
SAN HO-21	South African Sailing Directions Vol I	General information. Fourth Edition 2005.
SAN HO-22	South African Sailing Directions Vol II	Namibia and the Republic of South Africa from the Kunene River to Cape Agulhas. Fifth Edition 2014.
SAN HO-23	South African Sailing Directions Vol III	Republic of South Africa from Cape Agulhas to Ponta do Ouro. Prince Edward Islands, Antarctica and Bouvetøya. Fourth Edition 2014.

### MISCELLANEOUS BOOKS AND FORMS

PUBLICATION NO	TITLE	DESCRIPTION
SAN HO-9	Sight Form (Book of 50 forms)	To be used in conjunction with Sight Reduction Tables for Marine Navigation.

### FREE PUBLICATIONS, FORMS AND DIAGRAMS

Folio List No 1	West- and South West Coasts of Southern Africa from Kunene River to Cape Agulhas
Folio List No 2	South and East Coasts of Southern Africa from Cape Agulhas to Inhambane
Folio List No 3	Charts and Plotting Sheets not included in Folio List No's 1 and 2
SAN HO-16*	Hydrographic Note Forwarding information for SAN Charts and other Hydrographic Publications.
SAN HO-16a*	Hydrographic Note Forwarding information for Ports and Harbours.
Annual Summary of South African Notices to Mariners	- Published Annually.*
Cumulative List of South African Notices to Mariners	- Published Annually.*
South African Notices to Mariners	- Published Monthly.*
Chart Catalogue	- Published Annually.*

#### NOTES

1. Publications used for navigation must be kept up to date by Monthly Notices. Copies of Notices in PDF format may be downloaded at [www.sanho.co.za](http://www.sanho.co.za).
2. Those publications marked with an asterisk (\*) are only available in PDF format at [www.sanho.co.za](http://www.sanho.co.za).

## SOUTH AFRICAN NAVY HYDROGRAPHIC OFFICE - SAN CHART FOLIO LIST No 1

## West- and South West Coasts of Southern Africa from Kunene River to Cape Agulhas

CHART NUMBER	CHART TITLE	CONSEQ NO
* SAN 1	Southern Africa and Adjacent Oceans .....	
SAN 2	South Atlantic Ocean Eastern Portion .....	
* SAN 4	Orange River Mouth to Richards Bay .....	
* INT 204 SAN 27	Walvis Bay to Maputo .....	
INT 2590 SAN 71	Kunene River to Sand Table Hill .....	
INT 2600 SAN 72	Sand Table Hill to Cape Cross .....	
INT 2610 SAN 73	Cape Cross to Conception Bay .....	
INT 2620 SAN 74	Conception Bay to Hottentot Point .....	
INT 2630 SAN 75	Hottentot Point to Chamais Bay .....	
INT 2640 SAN 76	Chamais Bay to Port Nolloth .....	
INT 2650 SAN 77	Port Nolloth to Island Point .....	
INT 2660 SAN 78	Island Point to Cape Deseada .....	
INT 2670 SAN 79	Cape Deseada to Table Bay .....	
INT 2680 SAN 80	Table Bay to Cape Agulhas .....	
INT 2051 SAN 90	Baia dos Tigres to Walvis Bay .....	
INT 2052 SAN 91	Walvis Bay to Orange River .....	
INT 2053 SAN 92	Orange River to Table Bay .....	
* INT 7050 SAN 93	Table Bay to East London .....	
SAN 113	Orange River to White Point .....	
SAN 114	White Point to Skulfonteinpunt .....	
SAN 115	Skulfonteinpunt to Island Point .....	
SAN 116	Island Point to Olifantsrivier .....	
SAN 117	Olifantsrivier to Cape Columbine .....	
SAN 118	Cape Columbine to Table Bay .....	
SAN 119	Melkbospunt to Kaap Hangklip .....	
SAN 120	Cape Point to Cape Agulhas .....	
SAN 150	Table Bay to Valsbaai .....	
INT 2631 SAN 1002	Lüderitz Harbour and Approaches .....	
SAN 1003	Harbours on SW Coast of Africa .....	
INT 2612 SAN 1004	Walvis Bay Harbour .....	
INT 2613 SAN 1005	Approaches to Walvis Bay .....	
SAN 1009	St Helenabaai .....	
INT 2671 SAN 1010	Approaches to Saldanha Bay .....	
INT 2673 SAN 1011	Entrance to Saldanha Bay .....	
INT 2672 SAN 1012	Saldanha Bay .....	
INT 2681 SAN 1013	Approaches to Table Bay .....	
INT 2682 SAN 1014	Table Bay .....	
SAN 1015	Houtbaai .....	
SAN 1016	Valsbaai .....	
SAN 1017	Simon's Bay .....	

- Notes :
1. Items marked by ( \* ) supplied if not already held with Folio 2
  2. Other diagrams and publications available on request. See SAN HO-3 for details.
  3. Items marked by ( † ) have not yet been published.

**SOUTH AFRICAN NAVY HYDROGRAPHIC OFFICE - SAN CHART FOLIO LIST No 2**  
**South and East Coasts of Southern Africa from Cape Agulhas to Inhambane**

CHART NUMBER	CHART TITLE	CONSEQ NO
* SAN 1	Southern Africa and Adjacent Oceans.....	
SAN 3	South Indian Ocean Western Portion.....	
* SAN 4	Orange River Mouth to Richards Bay.....	
* INT 204 SAN 27	Walvis Bay to Maputo.....	
INT 700 SAN 28	Port Elizabeth to Mauritius.....	
INT 7510 SAN 81	Cape Agulhas to Cape St Blaize.....	
INT 7520 SAN 82	Cape St Blaize to Cape St Francis.....	
INT 7530 SAN 83	Cape St Francis to Great Fish Point.....	
INT 7540 SAN 84	Great Fish Point to Mbashe Point.....	
INT 7550 SAN 85	Mbashe Point to Port Shepstone.....	
INT 7560 SAN 86	Port Shepstone to Tugela River.....	
INT 7570 SAN 87	Tugela River to Ponta do Ouro.....	
INT 7580 SAN 88	Jesser Point to Boa Paz.....	
* INT 7050 SAN 93	Table Bay to East London.....	
INT 7051 SAN 94	East London to Richards Bay.....	
INT 7052 SAN 95	Durban to Inhambane.....	
SAN 121	Cape Agulhas to Cape Barracouta.....	
SAN 122	Cape Barracouta to Cape St Blaize.....	
SAN 123	Cape St Blaize to Cape Seal.....	
SAN 124	Cape Seal to Cape St Francis.....	
SAN 125	Cape St Francis to Bird Island.....	
SAN 126	Port Elizabeth to Great Fish Point.....	
SAN 127	Great Fish Point to East London.....	
SAN 128	East London to Mbashe River.....	
SAN 129	Mbashe River to Port St Johns.....	
SAN 130	Port St Johns to Port Shepstone.....	
SAN 131	Port Shepstone to Cooper Light.....	
SAN 132	Tongaat Bluff to Richards Bay.....	
SAN 133	Durnford Point to Leven Point.....	
SAN 134	Leven Point to Ponta do Ouro.....	
SAN 135	Aliwal Shoal to Tongaat Bluff.....	
INT 7521 SAN 1020	Mossel Bay and Approaches.....	
SAN 1021	Knysna.....	
SAN 1022	Plettenbergbaai.....	
INT 7531 SAN 1024	Approaches to Port Elizabeth.....	
INT 7532 SAN 1025	Bird Island Passage and Port Elizabeth.....	
INT 7533 SAN 1026	Ngqura Harbour.....	
INT 7541 SAN 1027	East London and Approaches.....	
INT 7563 SAN 1029	Durban - Oil Terminal SBM.....	
INT 7561 SAN 1030	Approaches to Durban.....	
INT 7562 SAN 1031	Durban Harbour.....	
INT 7572 SAN 1032	Approaches to Richards Bay.....	
INT 7571 SAN 1033	Richards Bay.....	

- Notes :
1. Items marked by ( \* ) supplied if not already held with Folio 1
  2. Other diagrams and publications available on request. See SAN HO-3 for details.
  3. Items marked by ( † ) have not yet been published.

**SOUTH AFRICAN NAVY HYDROGRAPHIC OFFICE - SAN CHART FOLIO LIST No 3**  
**Charts and Plotting Sheets not included in Folio List No's 1 and 2**

CHART NUMBER	CHART TITLE	CONSEQ NO
<b>SMALL CRAFT CHARTS</b>		
SAN SC 2	Saldanha Bay and Langebaan Lagoon .....	
SAN SC 3	Cape Deseada to Yzerfontein.....	
SAN SC 4	Yzerfontein to Kaap Hangklip.....	
SAN SC 5	False Bay to Cape Agulhas.....	
SAN SC 9	Cape St Francis to Bird Island.....	
SAN SC 12	Durban to Richards Bay.....	
<b>ISLANDS AND ANTARCTICA</b>		
INT 7745 SAN 2003	Marion and Prince Edward Islands.....	
INT 9056 SAN 2004	Approaches to Dronning Maud Land.....	
<b>YACHTING CHARTS</b>		
SAN 2051	Vaal Dam.....	
SAN 2053	Gariep Dam.....	
SAN 2054	Vanderkloof Dam.....	
SAN 5	Cape Town to Rio de Janeiro.....	
<b>INSTRUCTIONAL AND INFORMATION CHARTS</b>		
SAN 3001	General Maritime Information.....	
SAN 3002	Table Bay to Valsbaai (Instructional Chart).....	
SAN MZ 1	Maritime Zones.....	
<b>PLOTTING SHEETS</b>		
* P1 to P16	Plotting Sheets (Mercator)	
* P21	Dead Reckoning and Position Line Plotting Diagram	
* P22	Plotting Diagram (Half Sheet)	
<b>FISHING PLOTTING SHEETS</b>		
SAN FZ 1	Fishing Zone boundaries	
SAN FP 21	Orange River to Ponta do Ouro (Fishing Reference Grid)	