

SAN HO-3

ABRIDGED VERSION



SOUTH AFRICAN NAVY HYDROGRAPHIC OFFICE

**CATALOGUE AND INDEXES
OF
SAN CHARTS
AND
HYDROGRAPHIC PUBLICATIONS**

PRICE LIST OF CHARTS, DIAGRAMS AND PUBLICATIONS

Prices valid from 01 April 2023 to 31 March 2024 as approved by National Treasury

All navigational charts, unless otherwise stated, are currently priced at **R 332.00** per copy.
(Also refer to page 43 for full description of SANHO publications).

CHARTS

SAN 3001.....	R 332.00
SAN 3002.....	R 96.00
SAN MZ 1.....	R 332.00

DIAGRAMS

P 1 to P 16.....	R 96.00
P 21.....	R 96.00
P 22.....	R 96.00

PUBLICATIONS

SAN HO-1.....	R 172.00
SAN HO-2.....	R 223.00
SAN HO-6 (INT 1)	R 172.00
SAN HO-15.....	R 96.00
SAN HO-21.....	R 490.00
SAN HO-22.....	R 490.00
SAN HO-23.....	R 490.00

MISCELLANEOUS

SAN HO-9.....	R 29.00
SAN HO-12	Gratis
SAN HO-13	Gratis
SAN HO-14	Gratis
SAN HO-16	Gratis
SAN HO-16a	Gratis
Bathymetric Plotting Sheets.....	R 96.00
Cumulative List of SA Notices	Gratis
Monthly Notices to Mariners	Gratis

FISHING PLOTTING SHEETS

SAN FP 21.....	R 96.00
SAN FZ 1.....	R 96.00

GENERAL INFORMATION

This catalogue is amended by monthly South African Notices to Mariners and the correction information is shown in the Notation of Amendments inside the front cover of this book.

Paper Charts

The indexes show the limits of charts. An asterisk (*) against chart number on diagrams indicates that a panel is shown on that chart. Chart numbers in italics indicates that the chart has not yet been published. Limits shown in pecked lines in the indexes are those of projected charts and are inserted to facilitate the correction of this catalogue. The information contained in the publication is listed in nine columns, the charts being arranged in chart series and numerical order.

Col 1 - Chart Number	All charts are metricated.
Col 2 - Chart Title	The main title is given. When plans are included in the chart they are listed under the main title with their respective natural scales in the appropriate columns.
Col 3 - Natural Scale	Constant proportion between the true distance on the earth and on the chart at mid-latitude.
Col 4, 5, 6, 7 - Chart Limits	The limits of the chart are given from north to south and from west to east. Longitudes are all East from Greenwich unless otherwise stated.
Col 8 - Publication Date	The date of publication of a chart is shown in the middle of the bottom margin.
Col 9 - New Edition Date	This date is shown to the right of the publication date.

Electronic Navigational Charts (ENCs)

ENCs are digital S-57 vector-based datasets, commonly referred to as cells, which is S-63 encrypted for use in digital applications capable of reading such files. The indexes show the limits of the ENCs. ENC numbers in italics indicates that the cell has not yet been published.

The information contained in the publication is listed in seven columns, the ENCs being arranged in numerical and series order.

Col 1 - ENC Number	Use this number when purchasing an ENC.
Col 2 - ENC Title	The main title is given.
Col 3 - Display Scale	The optimum viewing scale of the data when loaded on the screen.
Col 4, 5, 6, 7 - ENC Limits	The limits of the cell are given from north to south and from west to east. Longitudes are all East from Greenwich unless otherwise stated.

Purchase of Products

Paper charts and publications may be purchased from the Official Agents listed on page 4 and 5, and for ENCs on page 5.

Information for the correcting of Products

In the interest of navigation, mariners and others are invited to forward to the Hydrographic Office, Private Bag X1, Tokai 7966 or per fax (021) 7872228 or e-mail hydrosan@iafrica.com, any information that may be useful for the correction of charts.

Early advice, with all available particulars of newly developed dangers, the establishment of or changes in any aids to navigation, is requested.

Forms SAN HO-16 and SAN HO-16a, on which to render such information, can be obtained gratis at <http://www.sanho.co.za>, or printed copies can be obtained from the Hydrographic Office or Chart Agents.

South African Notices to Mariners

These are published monthly and can be obtained gratis in PDF format at <http://www.sanho.co.za> or in printed versions on request from the Hydrographic Office or Chart Agents.

Copyright

This publication, or any part thereof, may not be reproduced or transmitted in any form or by any means, electronic, mechanical or optical, for any purpose, without the express permission of the Hydrographer, SA Navy.

Other Useful Publications

Attention is drawn to the information contained in IHO publication *C-55 Status of Hydrographic Surveys and Charting Worldwide*, concerning the status of charting, surveying and the provision of maritime safety information worldwide, which is freely downloadable from the International Hydrographic Organization's website at http://www.iho-oh1.net/iho_pubs/CB/C-55_Eng.htm link.

The IHO publication *S-66 Facts about Electronic Charts and Carriage Requirements* should be consulted for specific information on ENCs and their use. This publication may be downloaded at this link http://www.iho-oh1.net/iho_pubs/standard/S-66/S-66_e1.0.0_EN.pdf.

AGENTS FOR THE SALE OF SOUTH AFRICAN CHARTS AND HYDROGRAPHIC PUBLICATIONS

NATIONAL AGENTS

Cape Town	Chart World cc	29 Foregate Square, 1 Harbour House, Foreshore, 8001 or PO Box 6605, Roggebaai, 8012	Tel : 021 4198814 Fax : 086 511 2110 E-mail : chartworld@mweb.co.za
Cape Town	Charts International	1st Floor, Unit 23, Foregate Square, Harbour Road, Foreshore, Cape Town, or PO Box 6009, Roggebaai, 8012	Tel : 021 4197700 Fax : 021 4190580 E-mail : info@chartsinternational.co.za
Deneysville	Starmarine	10 Wall Street or PO Box 528, Deneysville, 1932	Tel : 016 3711299 Fax : 0866 846777
Durban	The Tyneside	Shop 11, John Ross House, 22 Margaret Mncadi Ave, Durban, 4001	Tel : 031 3377005 Fax : 031 3328139 E-mail : tyneside@global.co.za Website: tyneside.co.za
Durban	Cruising Connections	7 Fenton Lane, Durban, 4001	Tel : 031 3040108 Fax : 031 3040108 E-mail : tony@cruisingconnections.co.za Website: cruisingconnections.co.za
Jeffreys Bay (branches also in Port Elizabeth and St Francis Bay)	Commercial Marine	18 Schelde Street, Jeffreys Bay, 6330 PO Box 959, Jeffreys Bay, 6330	Tel : 042 2932991 Fax : 042 2931305 E-mail : buyer@commercialmarine.co.za
Johannesburg	Carte Afrique	PO Box 1943, Houghton, 2041	Tel : 011 4843718 Fax : 011 4842197 E-mail : info@carte.co.za
Mossel Bay	Seven Seas Marine	1 Mitchels Street, Mossel Bay, 6500 PO Box 1955, Mossel Bay, 6500	Tel : 044 6903932 Fax : 044 6903932 Cell : 082 7020655 E-mail : sevenseas@telkomsa.net
Port Elizabeth (branches also in Jeffreys Bay and St Francis Bay)	Commercial Marine	Dom Pedro Jetty, Port Elizabeth Harbour, 6056	Tel : 041 5862624 Fax : 041 5862797 E-mail : buyer@commercialmarine.co.za E-mail : info@commercialmarine.co.za
Port Elizabeth	National Ship Chandlers	9 Elizabeth Street, North End, Port Elizabeth, 6056 or PO Box 1625, Port Elizabeth, 6000	Tel : 041 4847633/4 Tel : 082 3724233 (AH) Tel : 082 3256684 (AH) Fax : 041 4847651 E-mail : georgec@natship.net E-mail : natshippe@natship.co.za
Port St Francis	Skippers Marine CC	The Port Hole, Port St Francis, St Francis Bay, 6312 or PO Box 603, Humansdorp, 6300	Tel : 042 2940289 Fax : 042 2940289 Cell : 082 9772062 E-mail : vukani@intekom.co.za
Sandton	Venue Africa	PO Box 783245, Sandton 2146	Tel : 016 3712079 Fax : 016 3711745 Cell : 083 6557949 Email : venue@global.co.za Website: venueafrica.com

NATIONAL AGENTS cont/

St Francis Bay **Commercial Marine** 153 St Francis Drive, St Francis Bay, 6312
(branches also in Jeffreys Bay and Port Elizabeth)

Tel : 042 2940724
Tel : 042 2941957
Website: commercialmarine.co.za

Swellendam **Heyneman Yamaha** 154 Voortrek Str, Swellendam, 6740
PO Box 225, Swellendam, 6740

Tel : 028 5142010
Fax : 028 5141105
Email : accounts@heyneman.co.za

Walmer **Dynamic Watersports** 12 3rd Avenue, Walmer, 6070
or PO Box 1114, Jeffrey's Bay, 6330

Tel : 041 0010547
Email : info@dynamicelements.co.za

INTERNATIONAL AGENTS

Namibia **Viggo Lund (Pty) Ltd** 162, 7th Street, Walvis Bay or PO Box 183

Tel : 00264 64203016
Fax : 00264 64206712

USA **East View Geospatial** 10601 Wayzata Boulevard, Minneapolis, MN, 55305

Tel : +1 952 252 1205
Fax : +1 952 252 1202
Website: geospatial.com
Website: eastview.com
Website: shop.geospatial.com
Email : geospatial@eastview.com

OFFICIAL DISTRIBUTOR OF SOUTH AFRICAN ENC's

South African ENC products are available to commercial users through the Value Added Resellers (VARs) of the International Centre for ENC's (IC-ENC). For further details visit www.ic-enc.org.

Admiralty Charts and Publications (www.ukho.gov.uk)

ChartCo (www.chartco.com)

Chart World (www.chartworld.com)

Datema Nautical Safety (www.datema.nl/specials/enc_track)

C-map (www.c-map.no)

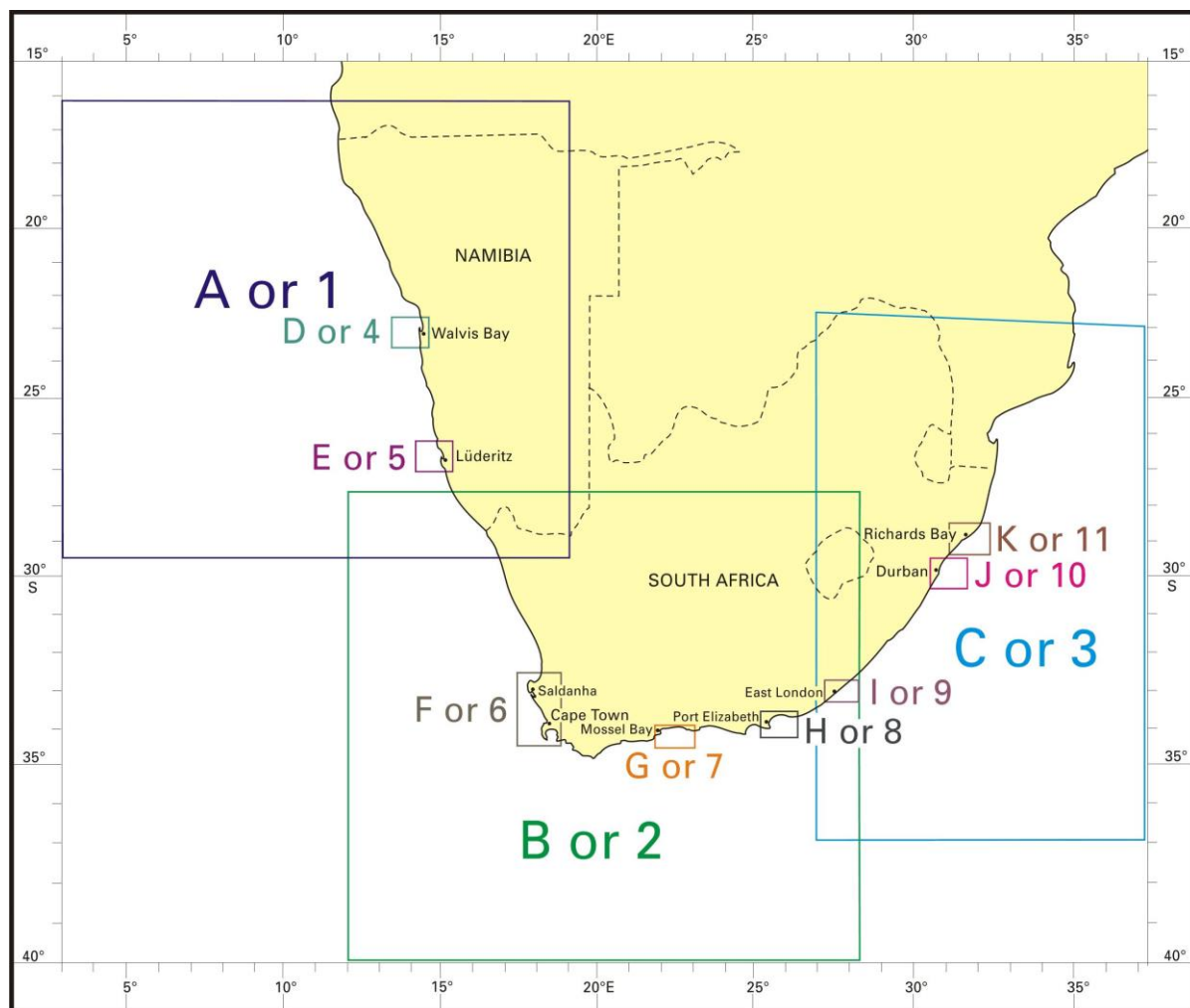
Maris Maritime Information Systems (www.maris.no)

Navtor (www.navtor.com)

Primar Stavanger (www.primar-stavanger.org)

LIMITS OF INDEXES

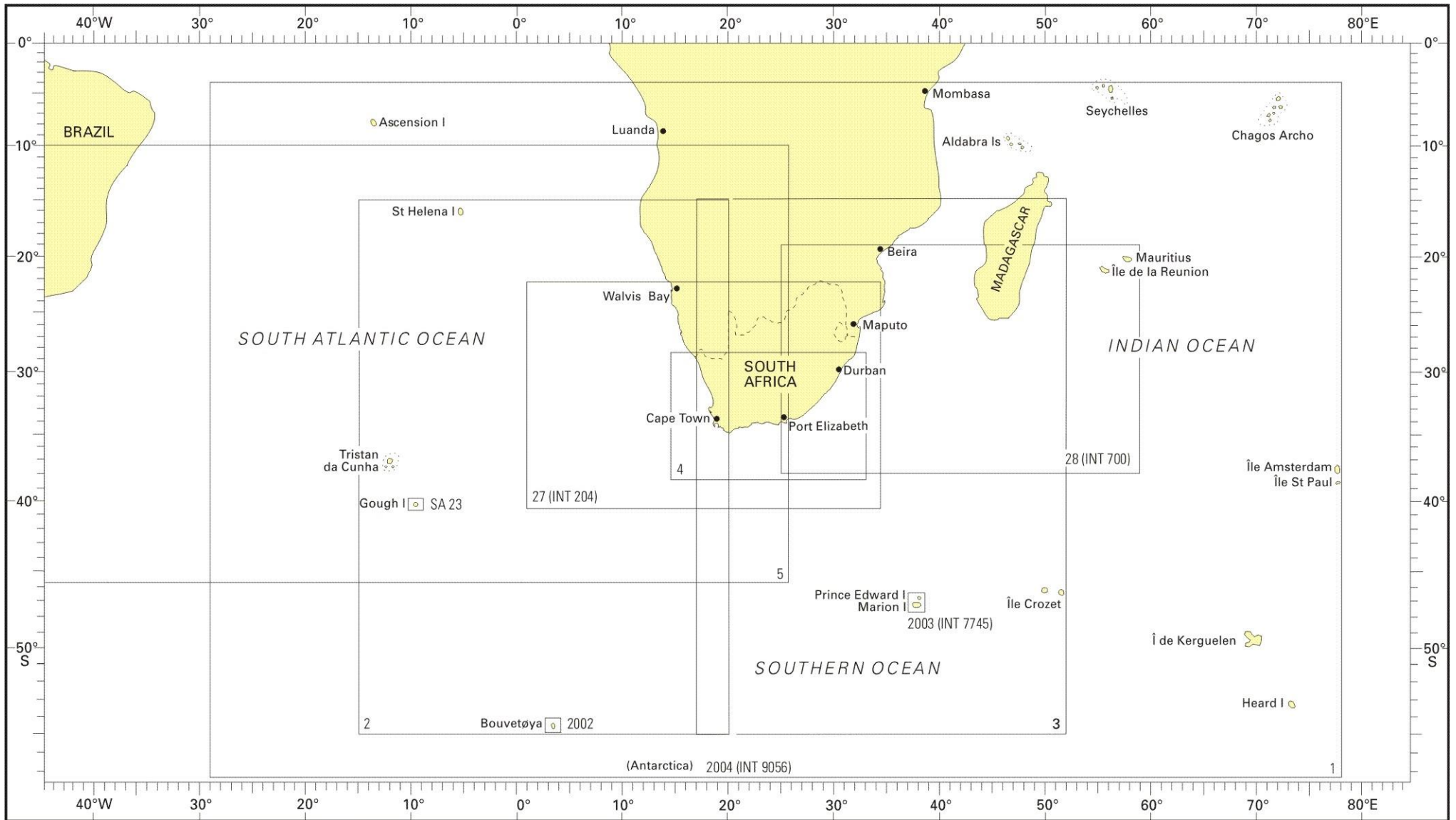
Paper Chart Panels are labeled A through K
ENC Panels are labeled 1 through 11



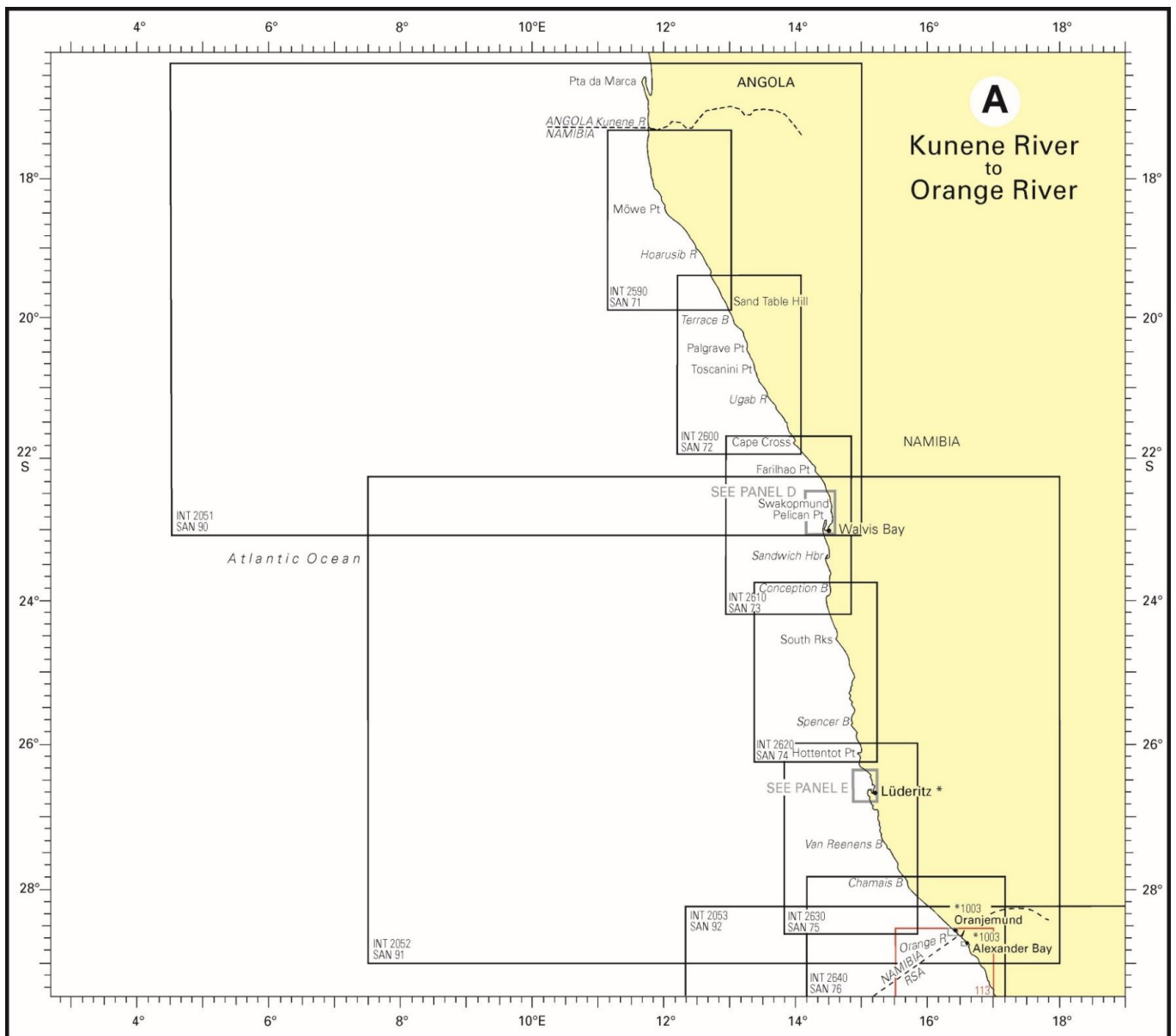
- A or 1 Kunene River to Orange River
- B or 2 Orange River to East London
- C or 3 East London to Inhambane
- D or 4 Walvis Bay
- E or 5 Lüderitz
- F or 6 Saldanha Bay, Table Bay and False Bay

- G or 7 Mossel Bay to Plettenberg Bay
- H or 8 Port Elizabeth to Bird island
- I or 9 East London
- J or 10 Durban
- K or 11 Richards Bay

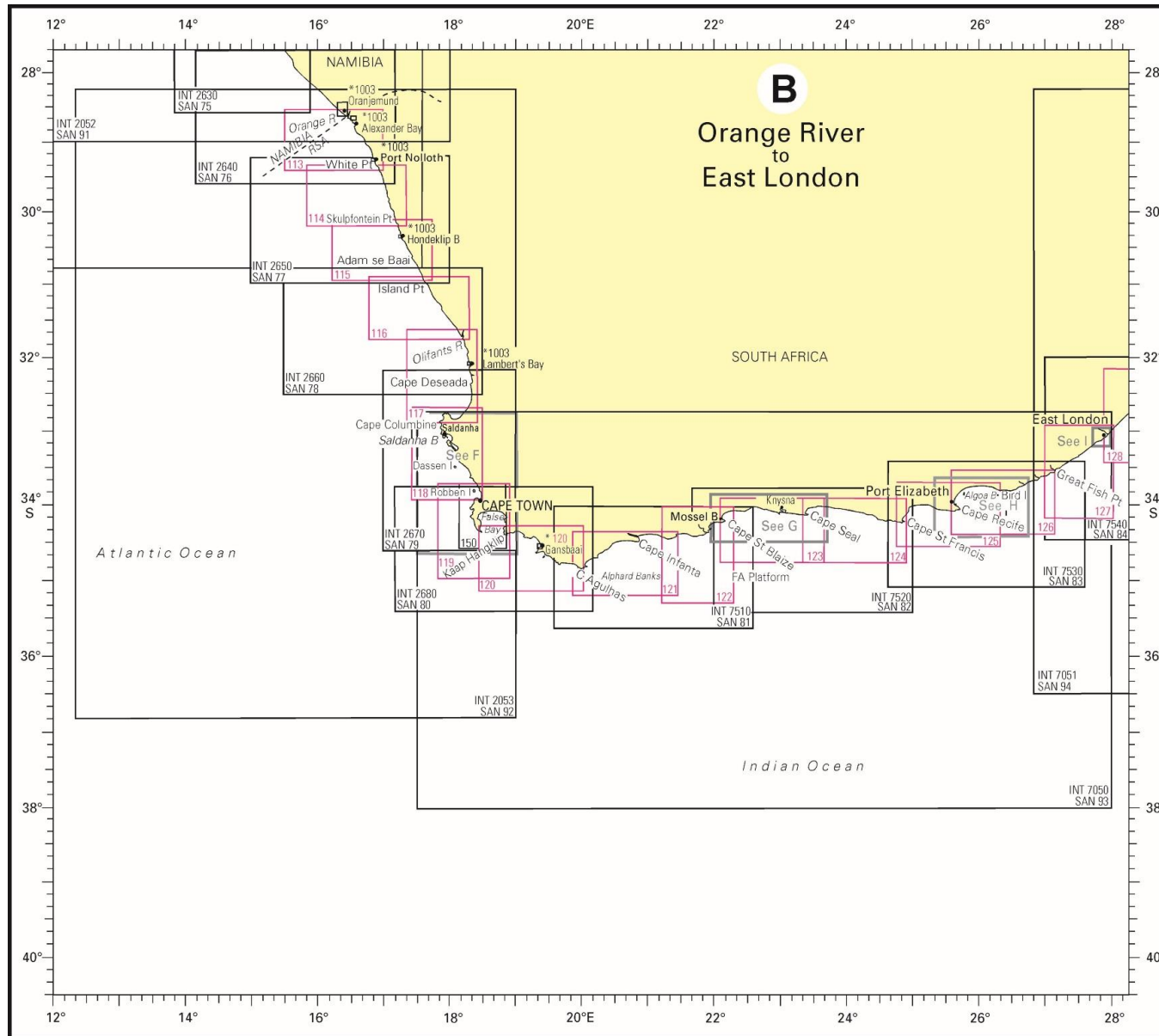
SMALL SCALE CHARTS AND CHARTS OF ISLANDS AND ANTARCTICA



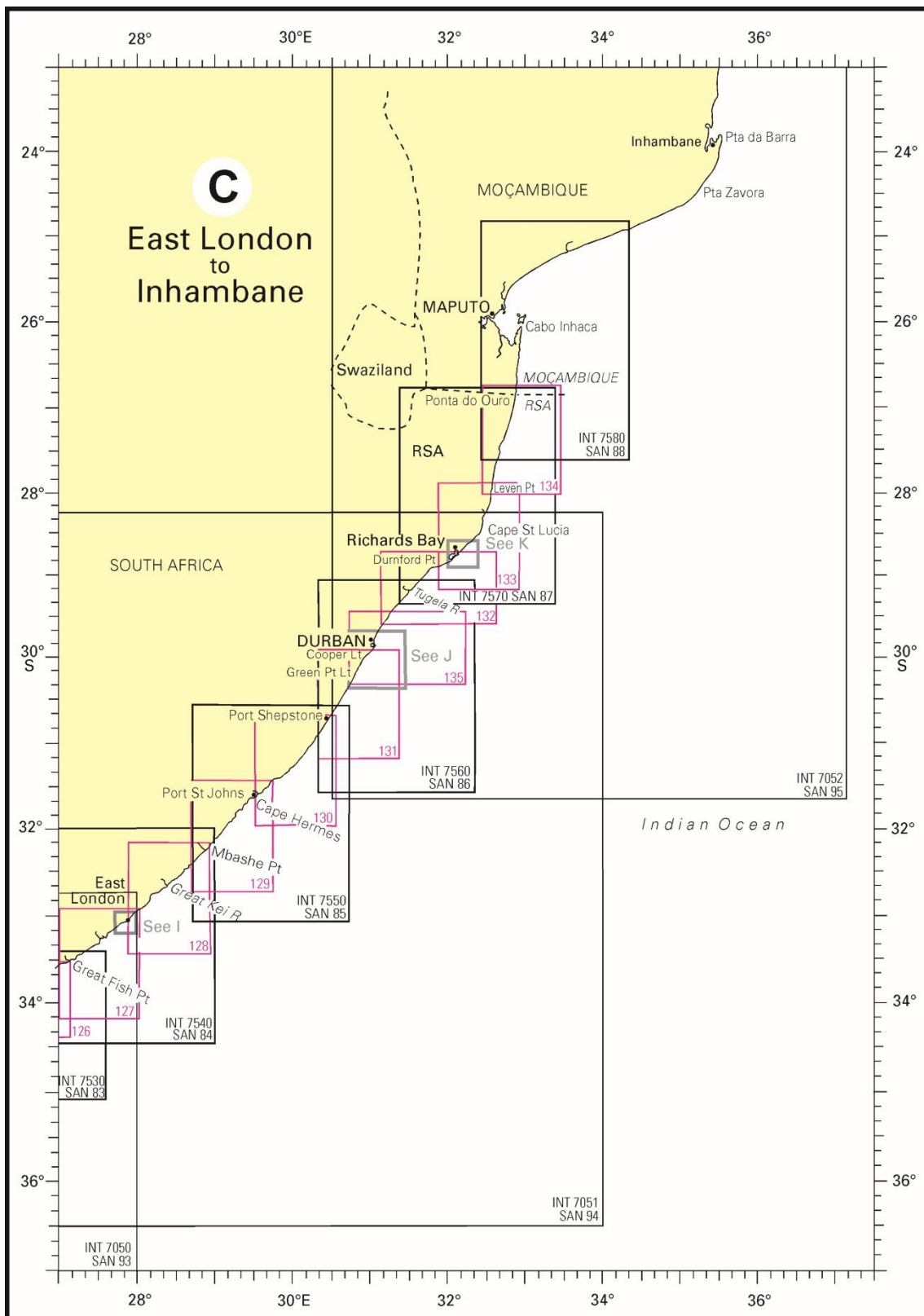
KUNENE RIVER TO ORANGE RIVER



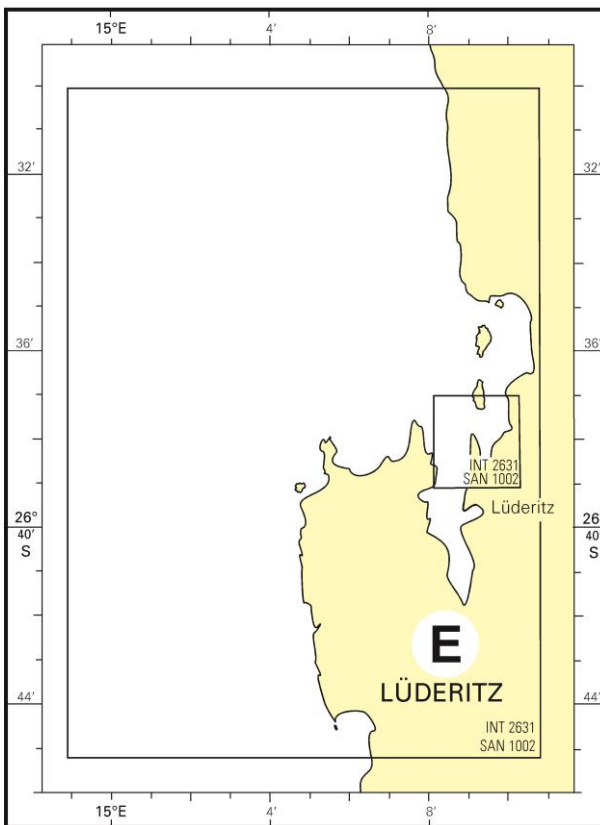
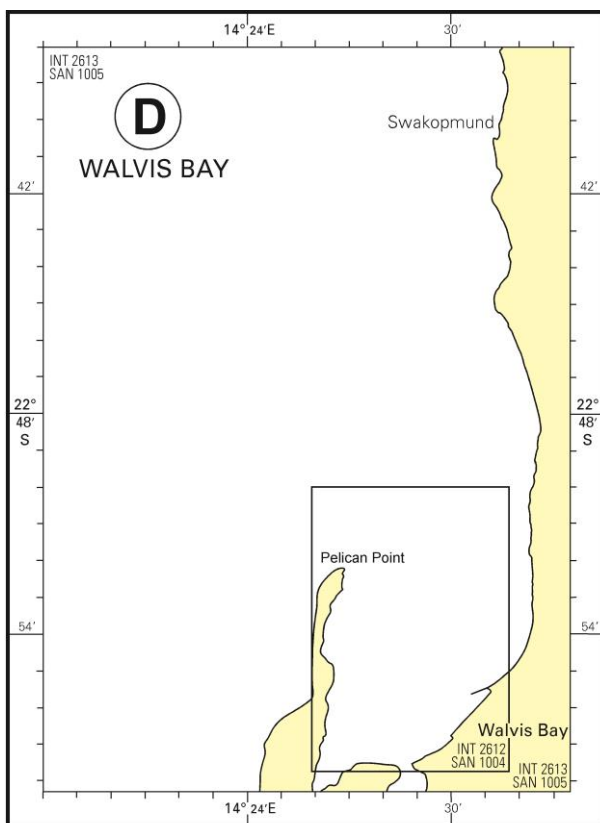
ORANGE RIVER TO EAST LONDON



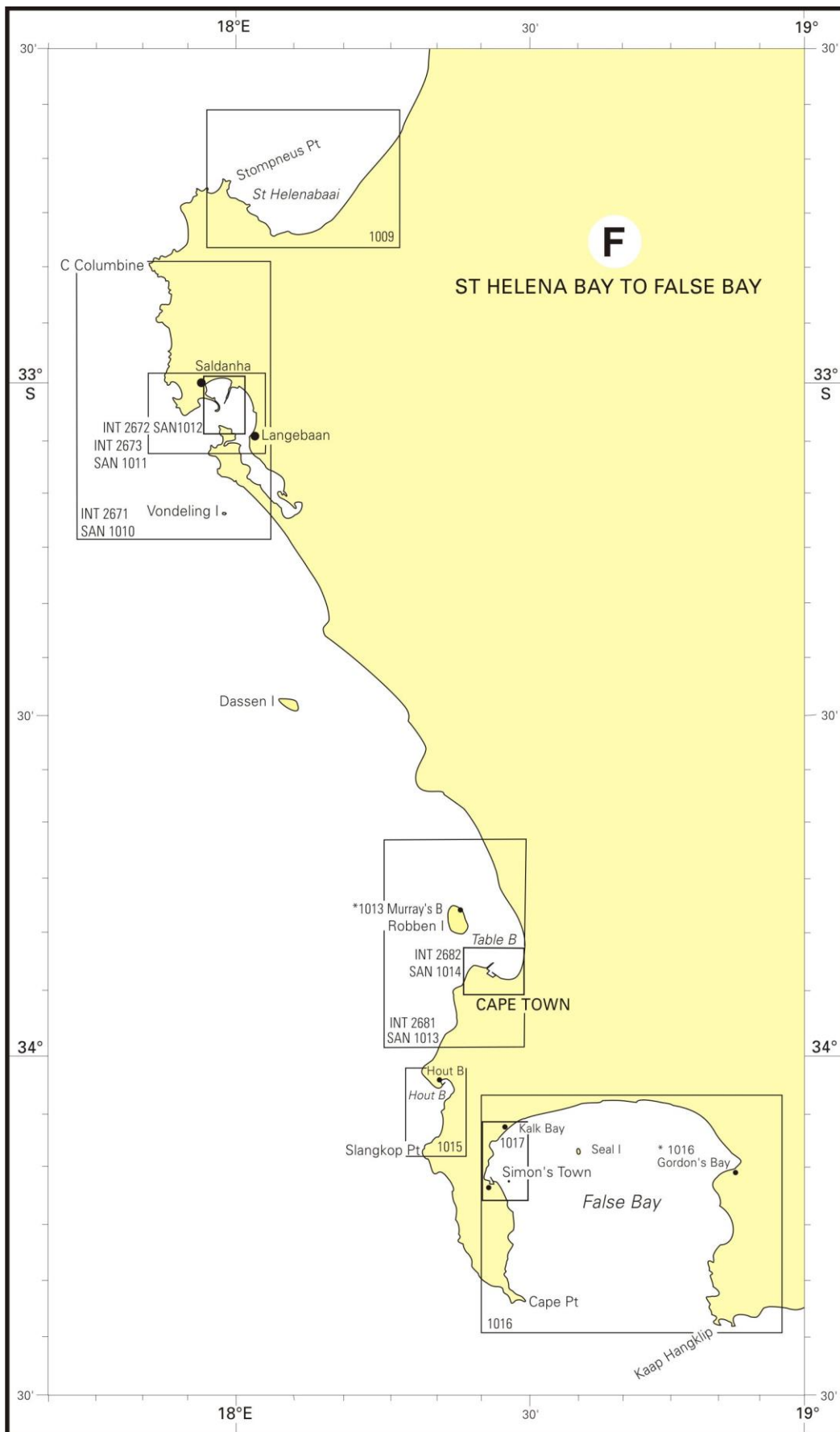
EAST LONDON TO INHAMBANE



HARBOUR AND APPROACHES WALVIS BAY AND LÜDERITZ

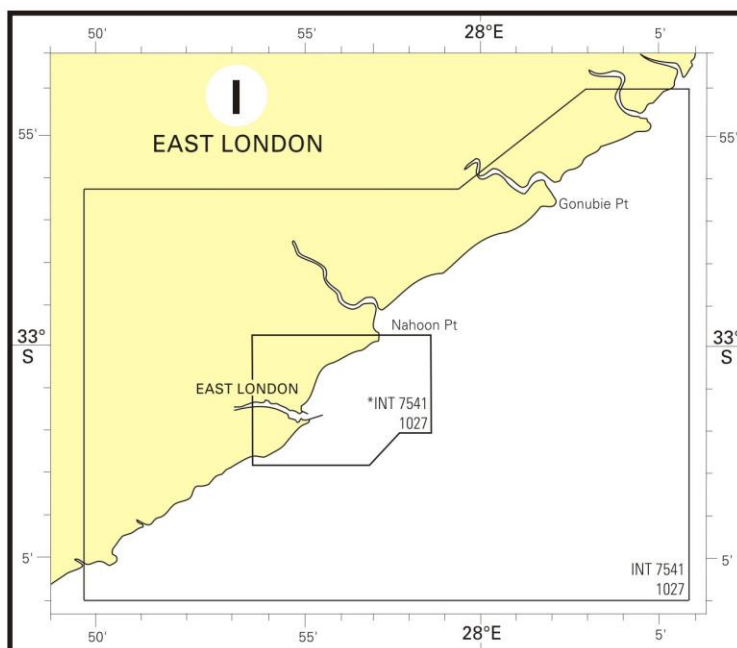
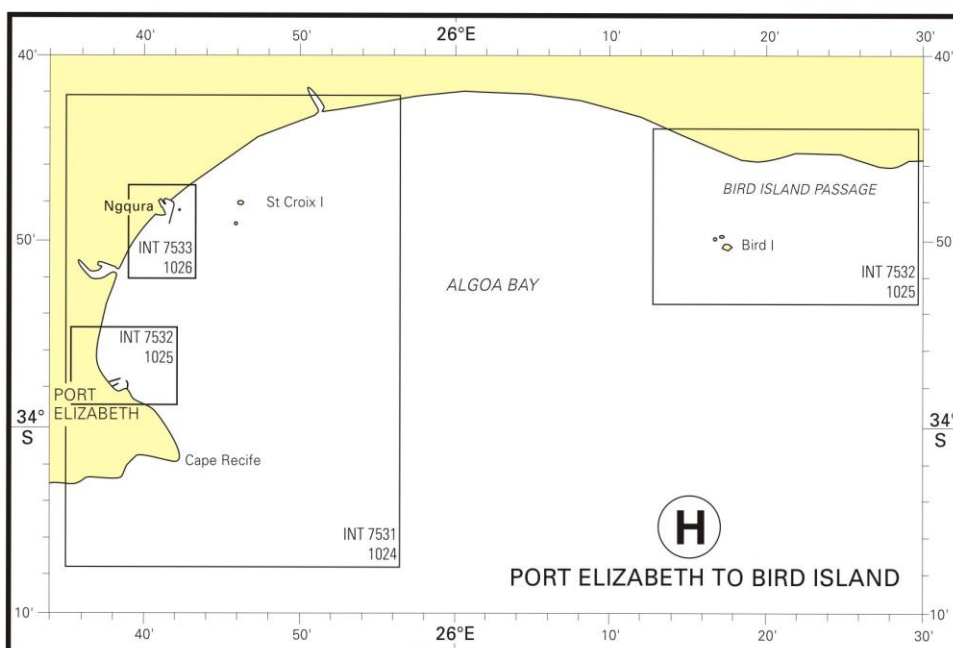
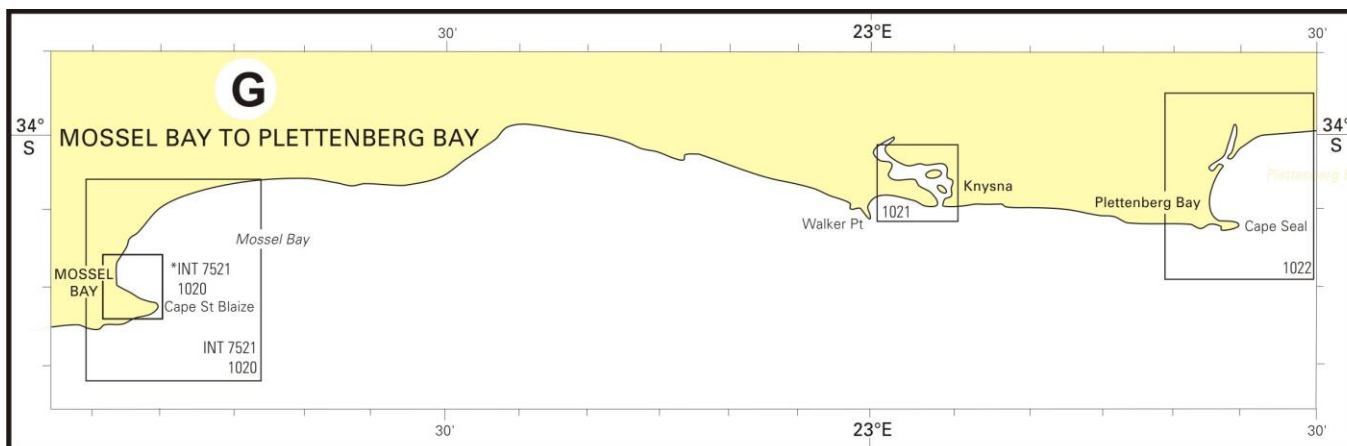


HARBOUR AND APPROACHES ST HELENA BAY TO FALSE BAY

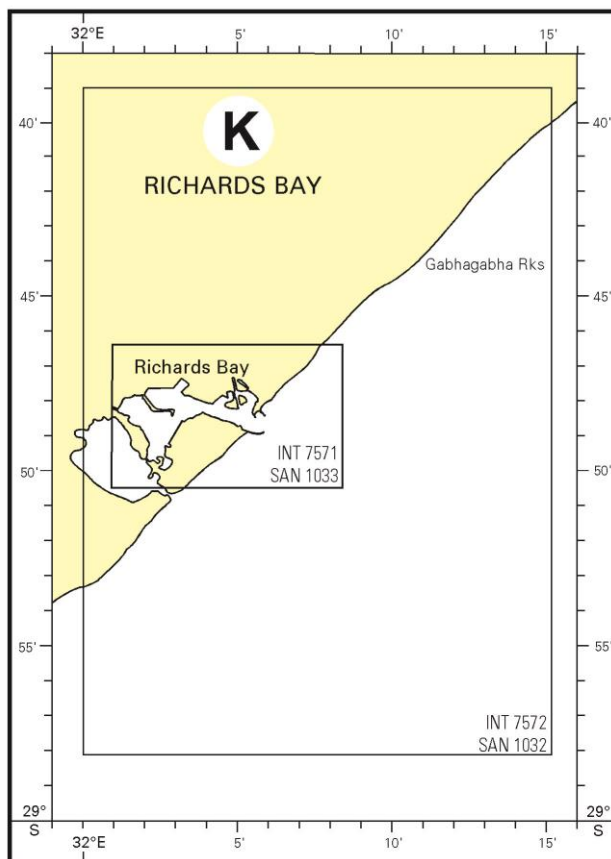
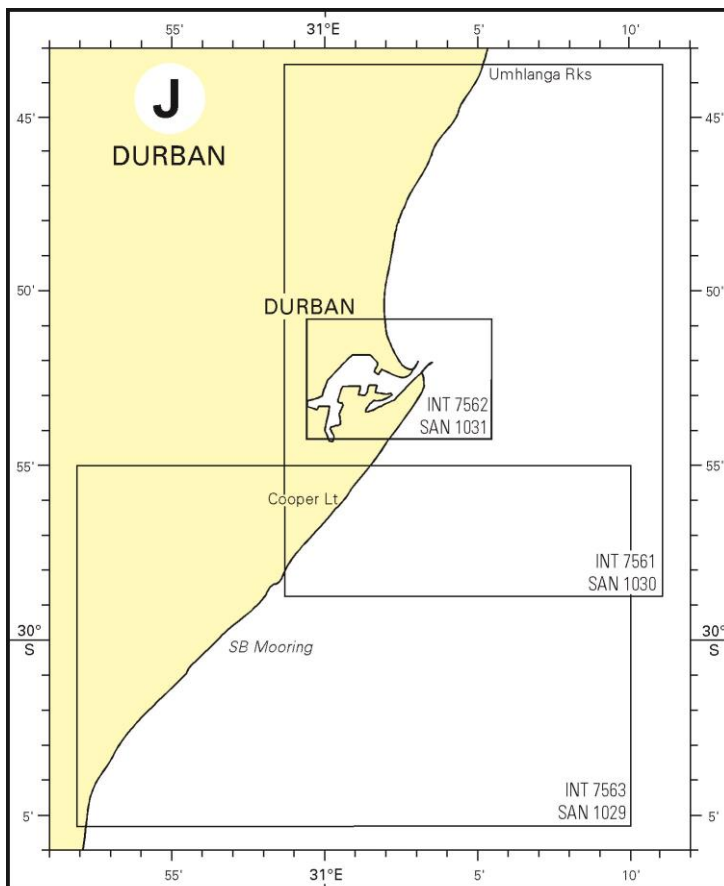


HARBOUR AND APPROACHES

MOSEL BAY TO EAST LONDON



HARBOUR AND APPROACHES DURBAN TO RICHARDS BAY



For Electronic Navigational Chart coverage see www.sanho.co.za/encs.htm or <http://www.sanho.co.za/catalogue.htm> pages.

HYDROGRAPHIC PUBLICATIONS

LIST OF LIGHTS AND RADIO SERVICES

<i>PUBLICATION NO</i>	<i>TITLE</i>	<i>DESCRIPTION</i>
SAN HO-1	South African List of Lights, Fog Signals and Radio Services	Navigational aids on the coasts of Namibia and Republic of South Africa from Möwe Point to Ponta do Ouro, Atlantic and Indian Oceans. Radio Services for navigation and communications. Weather Bulletins. 2022 Edition.

TIDE TABLES

<i>PUBLICATION NO</i>	<i>TITLE</i>	<i>DESCRIPTION</i>
SAN HO-2	South African Tide Tables	Tide Tables and Sunrise, Sunset, Moonrise and Moonset tables for Walvis Bay, Lüderitz, Port Nolloth, Saldanha, Cape Town, Simon's Town, Hermanus, Mossel Bay, Knysna, Port Elizabeth, East London, Durban and Richards Bay. Height of the tide at every hour, at all places, is also tabulated. Published annually.

CHART CATALOGUE

<i>PUBLICATION NO</i>	<i>TITLE</i>	<i>DESCRIPTION</i>
* SAN HO-3	South African Chart Catalogue	Catalogue and Indexes of South African Charts and other Hydrographic Publications. 2022 Edition. Only available in digital PDF format at www.sanho.co.za .

SYMBOLS AND ABBREVIATIONS

<i>PUBLICATION NO</i>	<i>TITLE</i>	<i>DESCRIPTION</i>
SAN HO-6 (INT 1)	Symbols and Abbreviations	Symbols and abbreviations used on South African charts. Sixth Edition 2017.

COLREGS

<i>PUBLICATION NO</i>	<i>TITLE</i>	<i>DESCRIPTION</i>
SAN HO-15	International Regulations for Preventing Collisions at Sea 1972	2020 Edition.

SAILING DIRECTIONS

<i>PUBLICATION NO</i>	<i>TITLE</i>	<i>DESCRIPTION</i>
SAN HO-21	South African Sailing Directions Vol I	General information. Fourth Edition 2005.
SAN HO-22	South African Sailing Directions Vol II	Namibia and the Republic of South Africa from the Kunene River to Cape Agulhas. Fifth Edition 2014.
SAN HO-23	South African Sailing Directions Vol III	Republic of South Africa from Cape Agulhas to Ponta do Ouro. Prince Edward Islands, Antarctica and Bouvetøya. Fourth Edition 2014.

MISCELLANEOUS BOOKS AND FORMS

<i>PUBLICATION NO</i>	<i>TITLE</i>	<i>DESCRIPTION</i>
SAN HO-9	Sight Form (Book of 50 forms)	To be used in conjunction with Sight Reduction Tables for Marine Navigation.

FREE PUBLICATIONS, FORMS AND DIAGRAMS

Folio List No 1	West- and South West Coasts of Southern Africa from Kunene River to Cape Agulhas	
Folio List No 2	South and East Coasts of Southern Africa from Cape Agulhas to Inhambane	
Folio List No 3	Charts and Plotting Sheets not included in Folio List No's 1 and 2	
SAN HO-16*	Hydrographic Note Forwarding information for SAN Charts and other Hydrographic Publications.	
SAN HO-16a*	Hydrographic Note Forwarding information for Ports and Harbours.	
Annual Summary of South African Notices to Mariners		- Published Annually.*
Cumulative List of South African Notices to Mariners		- Published Annually.*
South African Notices to Mariners		- Published Monthly.*

NOTES

1. Publications used for navigation must be kept up to date by Monthly Notices. Copies of Notices in PDF format may be downloaded at www.sanho.co.za.
2. Those publications marked with an asterisk (*) are also available in PDF format at www.sanho.co.za.